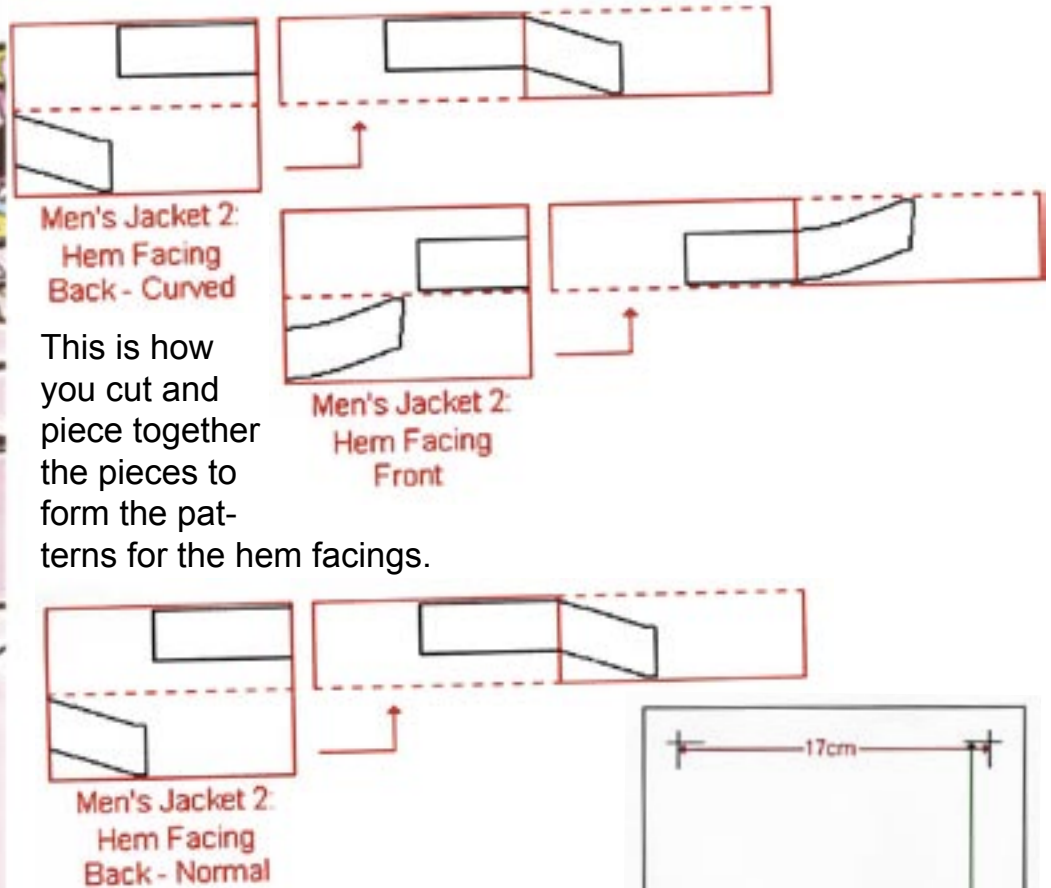


Fashion Freaks



PATTERN LAYOUT

MEN'S RAGLAN SLEEVE JACKET - HEM FACING



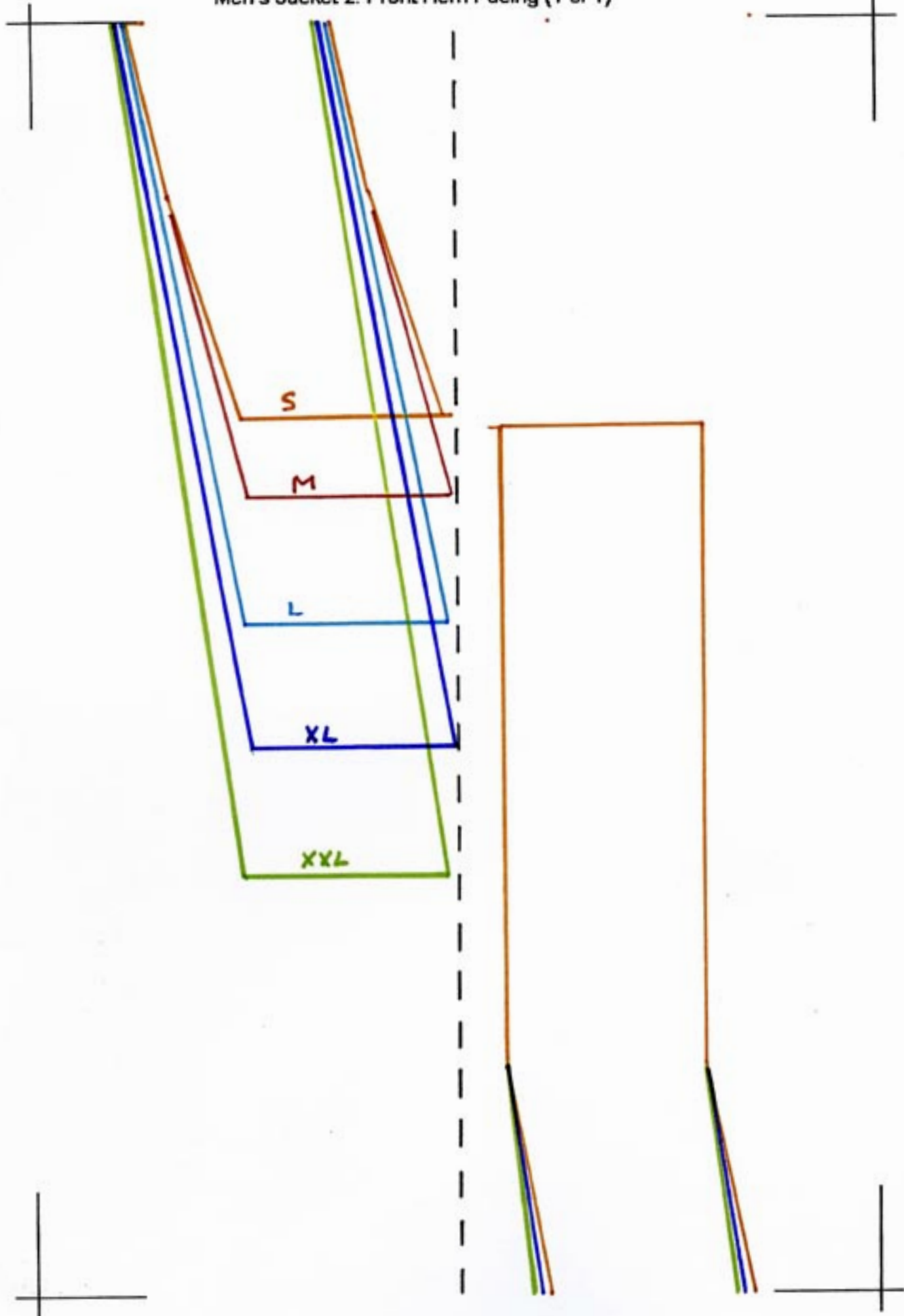
This is how you cut and piece together the pieces to form the patterns for the hem facings.

Note that there are separate pieces for the curved and the normal back.

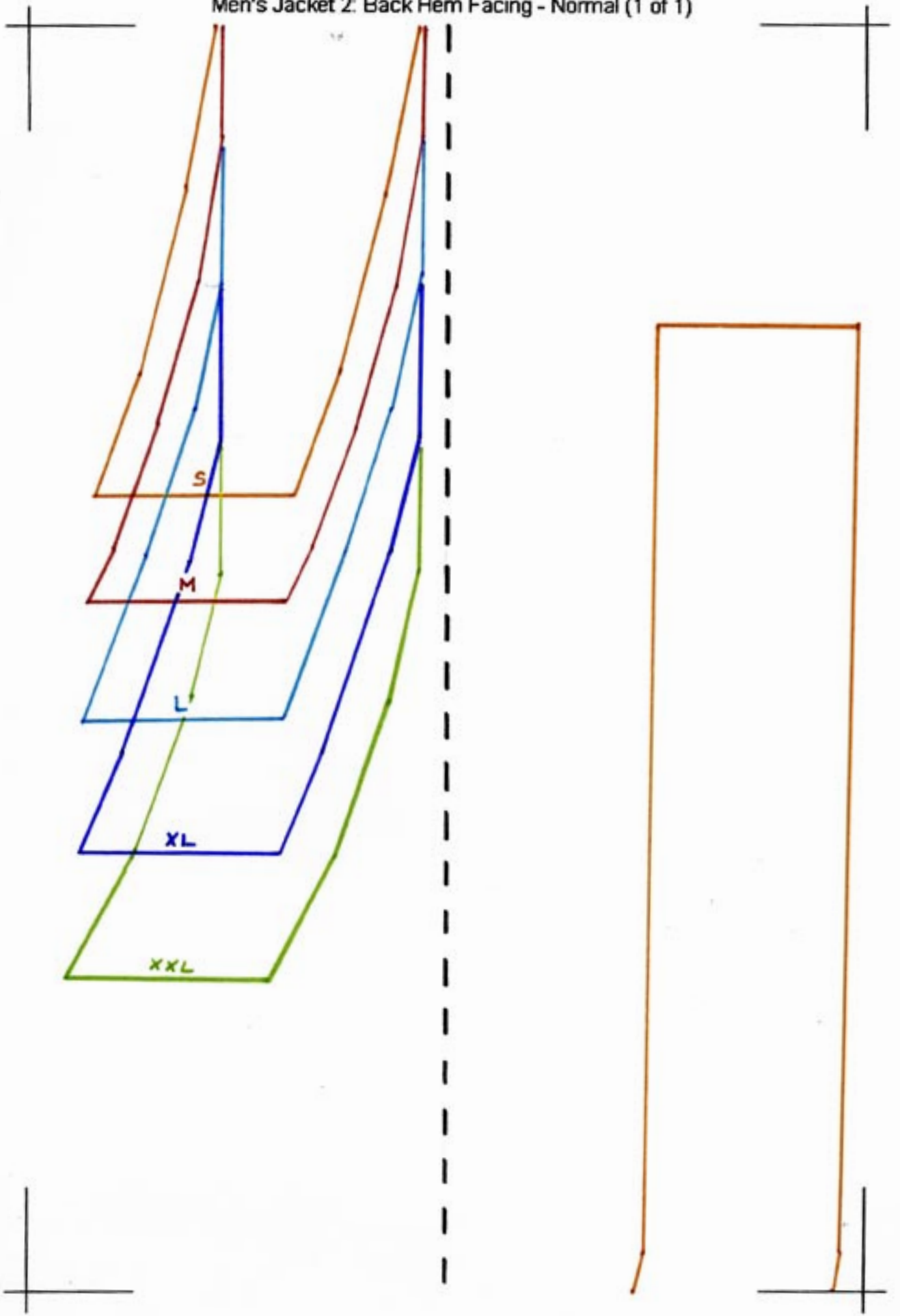
Each paper in this pdf-file contains one full pattern piece.

Remember to print out on A4 paper (210 x 297 mm) to get the right measurements for your size. Measure the distance between the 'corner hooks' to make sure you have the right size. The distance is (170 x 257 mm)

Men's Jacket 2: Front Hem Facing (1 of 1)



Men's Jacket 2: Back Hem Facing - Normal (1 of 1)



Men's Jacket 2: Back Hem Facing - Curved (1 of 1)

