

Fashion Freaks



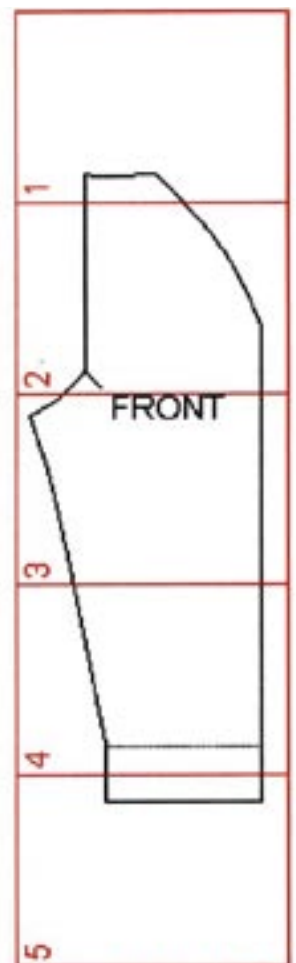
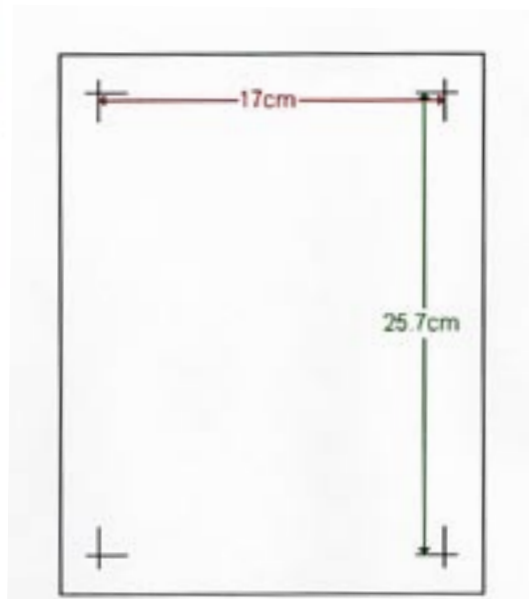
PATTERN LAYOUT

WOMEN'S RAGLAN SLEEVE JACKET - SLEEVE 1

This is how the pattern pieces should go together to form the total pattern for the sleeve 1 piece of the women's raglan sleeve jacket.

Each paper in this pdf-file contains a numbered section from this pattern.

You shall put them together by matching the 'corner hooks' with each other.

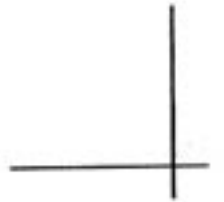
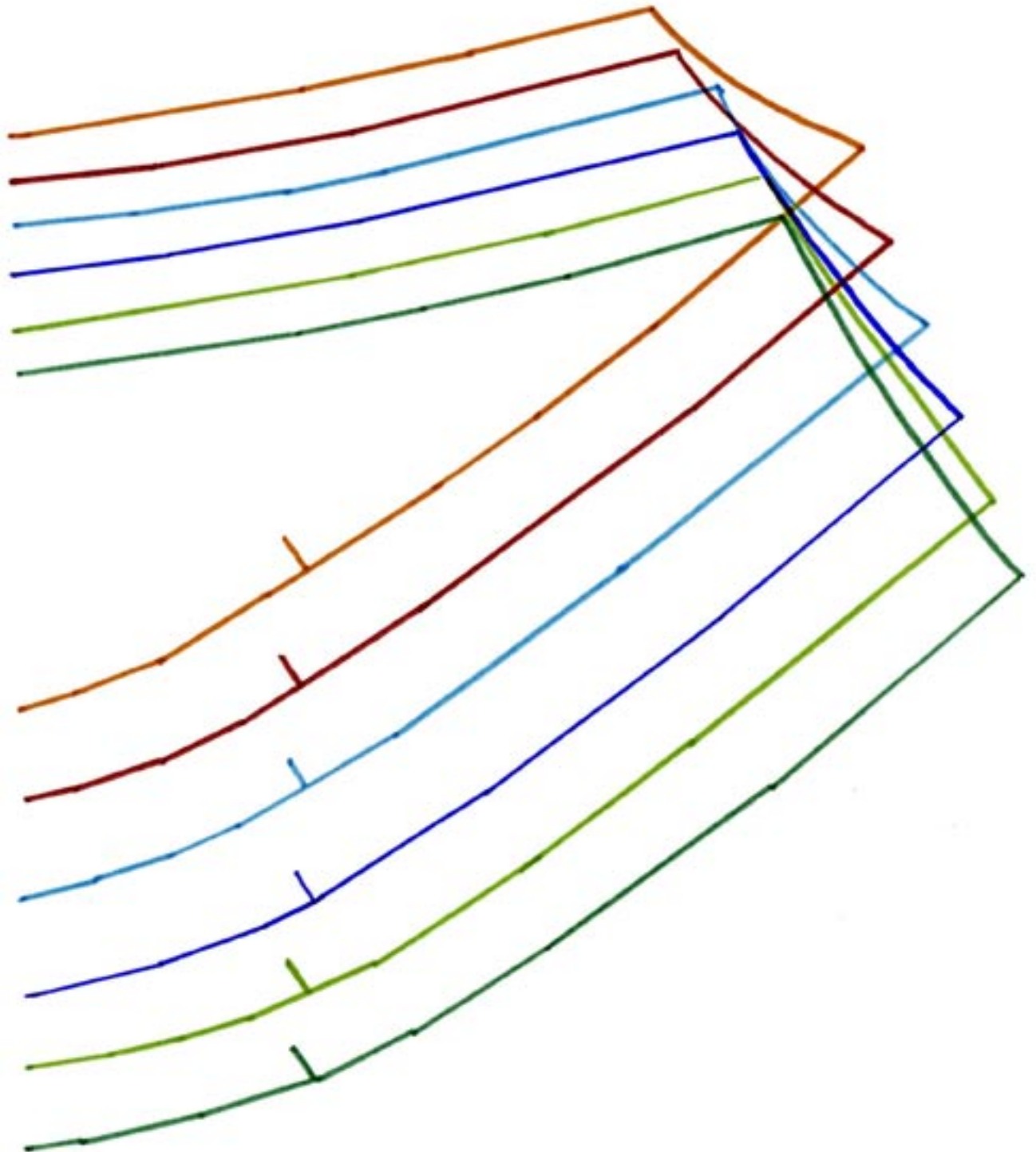
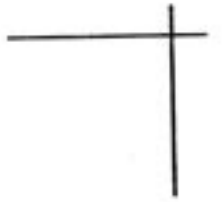


Women's Jacket 2:
Sleeve - I

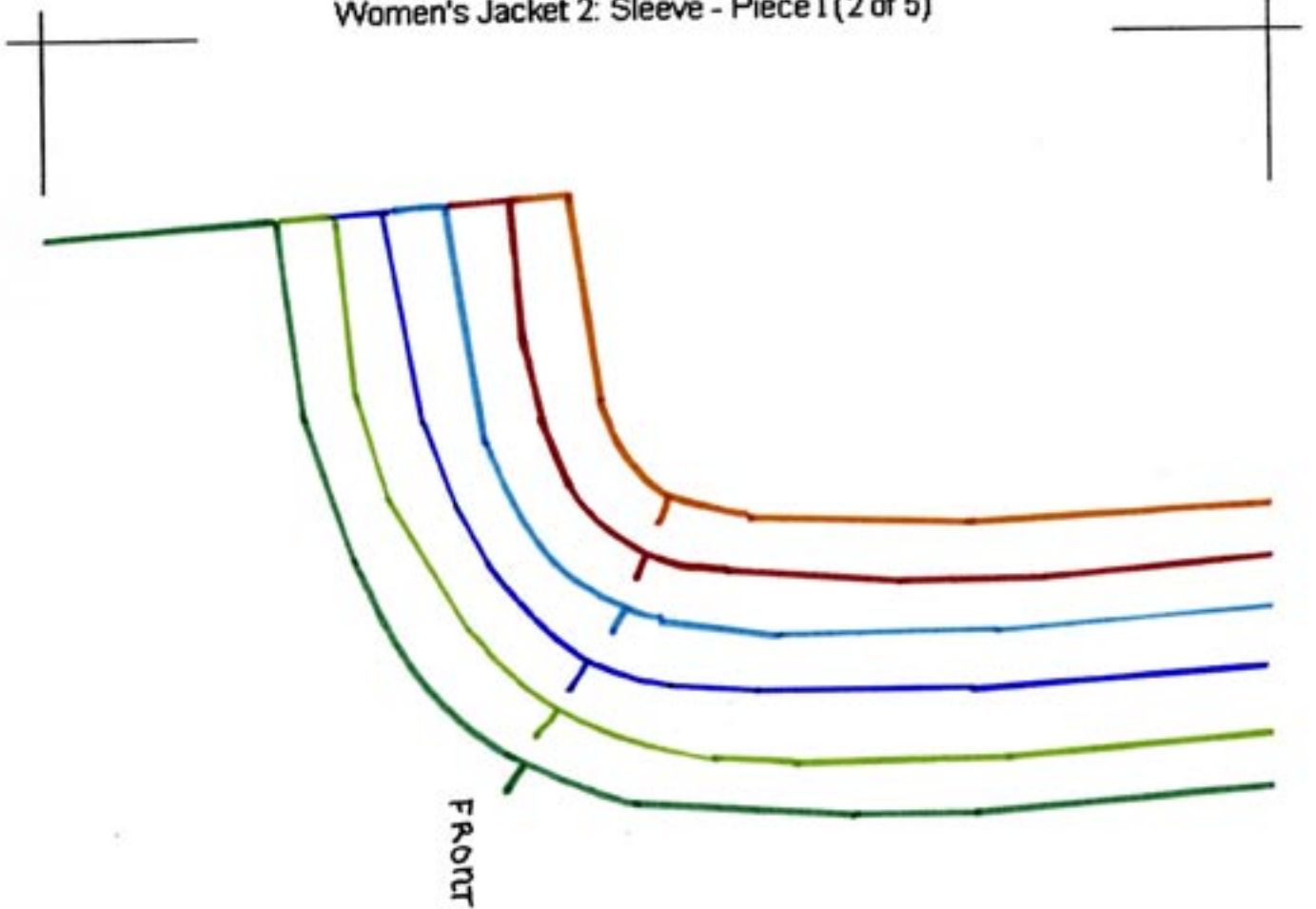
Remember to print out on A4 paper (210 x 297 mm) to get the right measurements for your size.

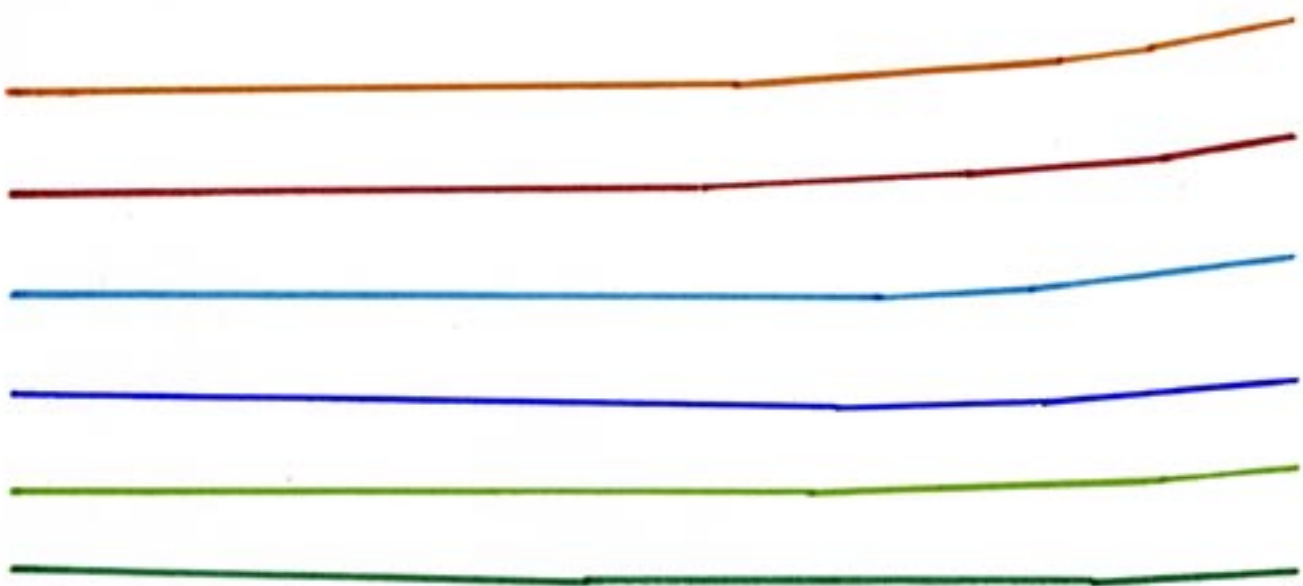
Measure the distance between the 'corner hooks' to make sure you have the right size. The distance is (170 x 257 mm)

Women's Jacket 2: Sleeve - Piece I (1 of 5)



Women's Jacket 2: Sleeve - Piece I (2 of 5)

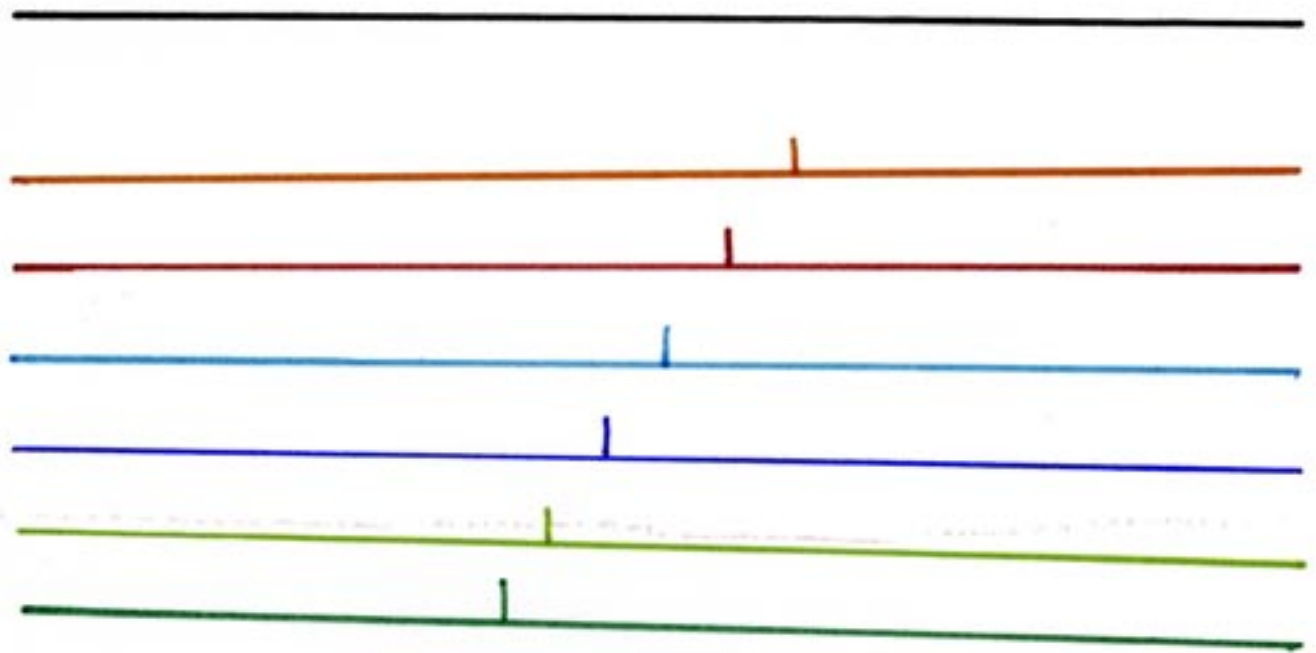




Women's Jacket 2: Sleeve - Piece I (3 of 5)



Run of Fabric



Women's Jacket 2: Sleeve - Piece I (4 of 5)



Women's Jacket 2: Sleeve - Piece I (5 of 5)

