

Fashion Freaks



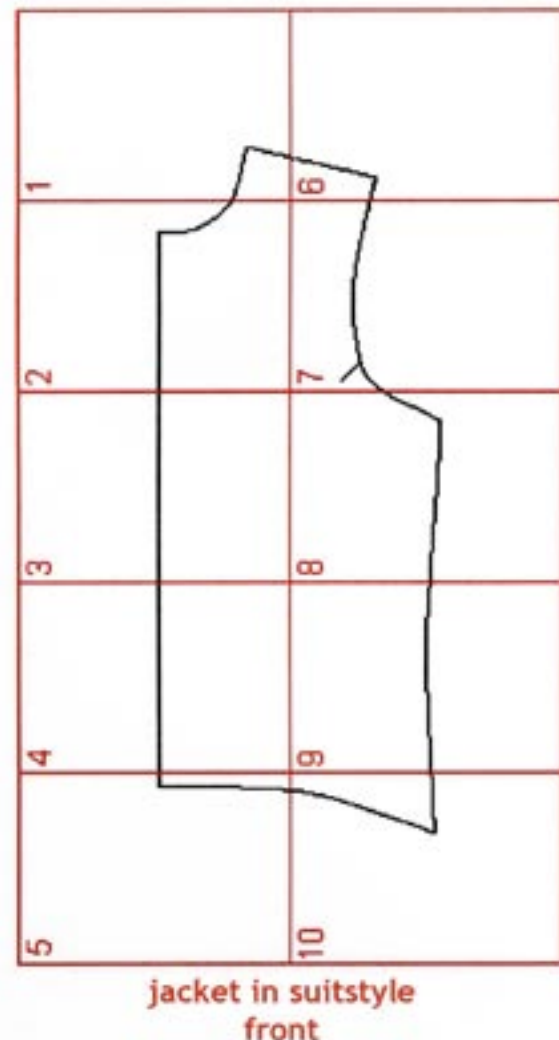
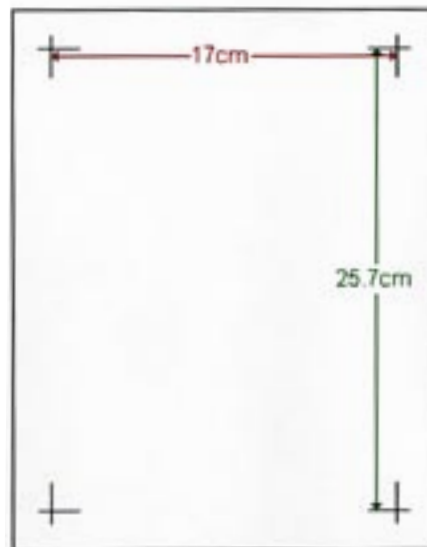
PATTERN LAYOUT

MEN'S SUITSTYLE JACKET - FRONT

This is how the pattern pieces should go together to form the total pattern for the front piece of the men's suitstyle jacket.

Each paper in this pdf-file contains a numbered section from this pattern.

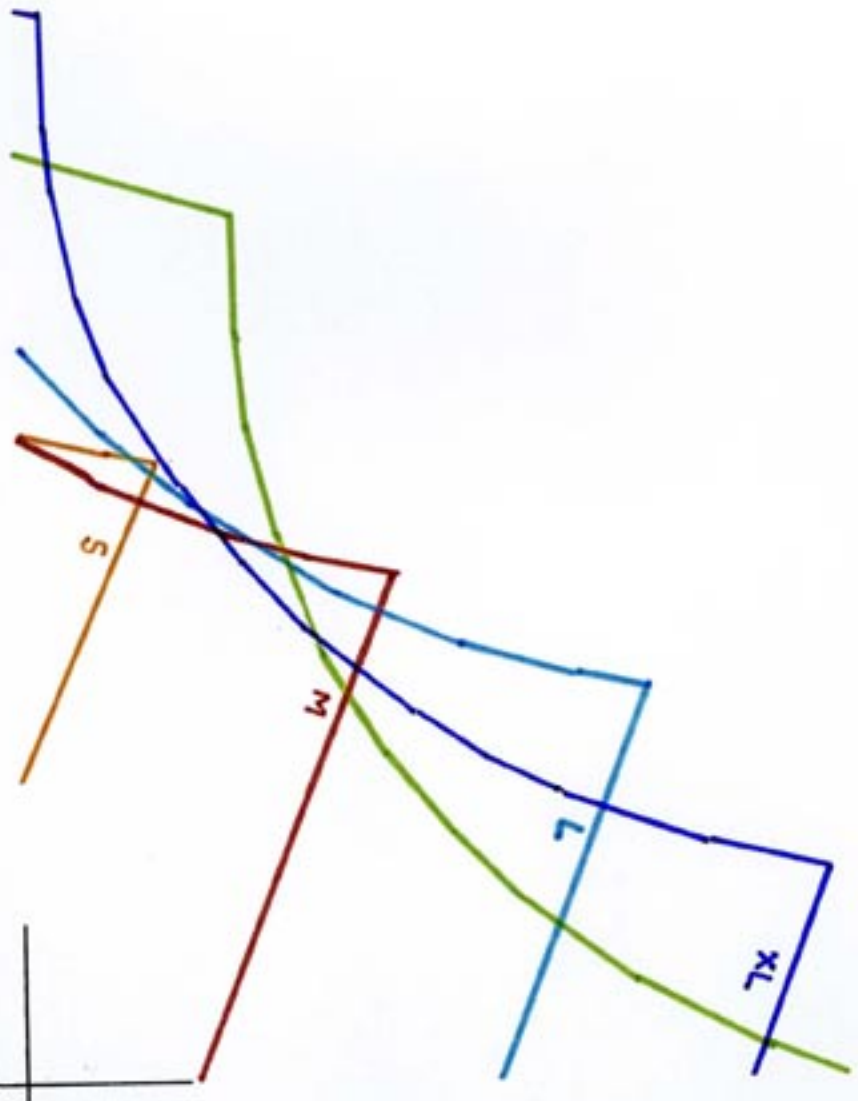
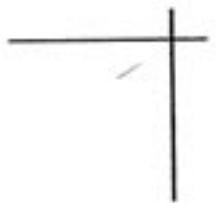
You shall put them together by matching the 'corner hooks' with each other.



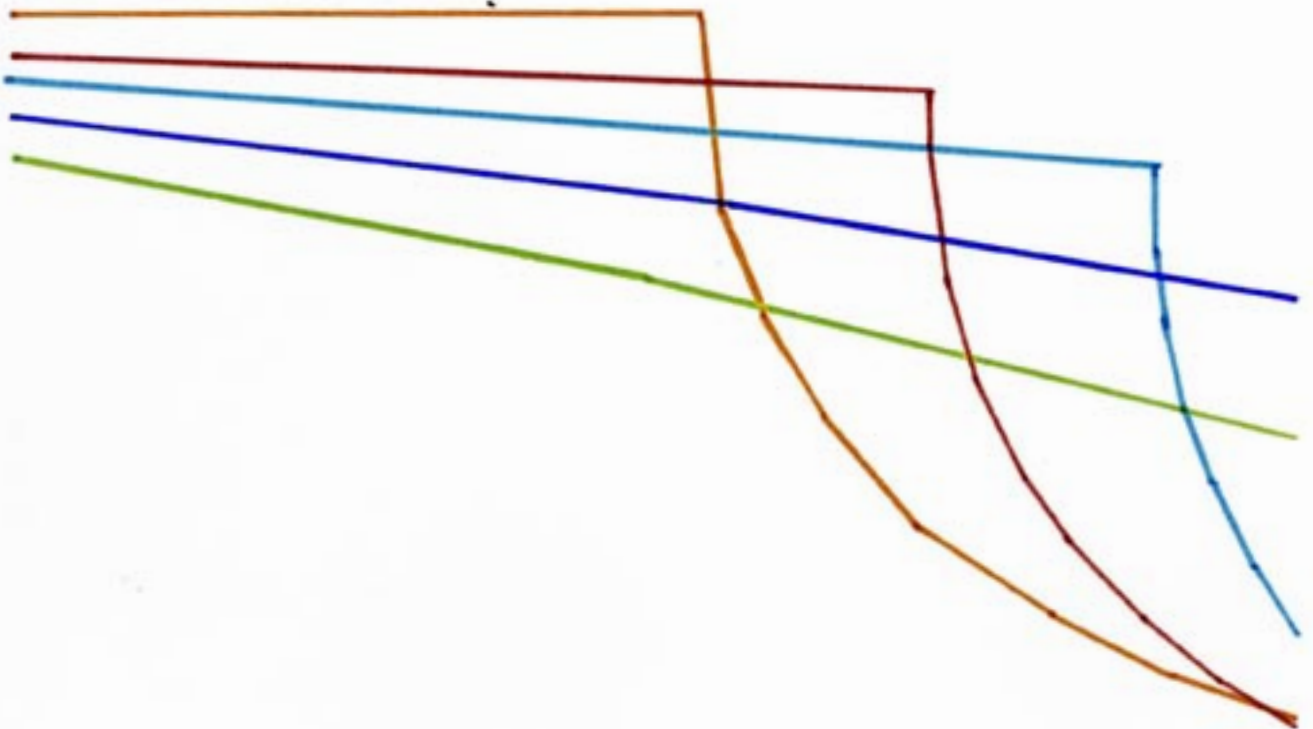
Remember to print out on A4 paper (210 x297 mm) to get the right measurements for your size.

Measure the distance between the 'corner hooks' to make sure you have the right size. The distance is (170 x 257 mm)

Men's Jacket 1: Front (1 of 10)



Men's Jacket 1: Front (2 of 10)



Men's Jacket 1: Front (3 of 10)



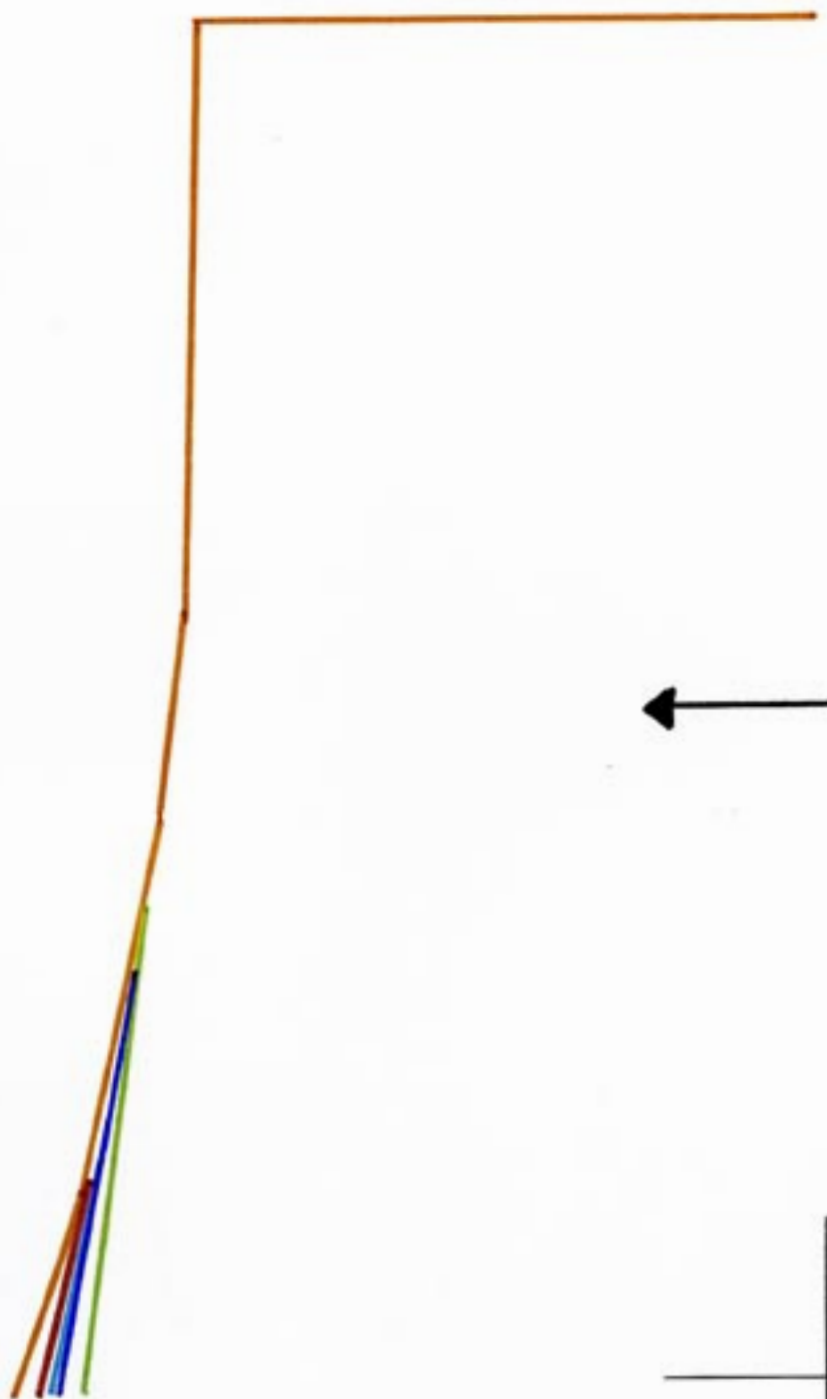
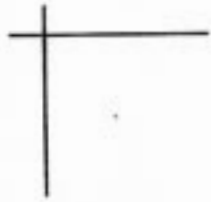
Men's Jacket 1: Front (4 of 10)



run of fabric



Men's Jacket 1: Front (5 of 10)



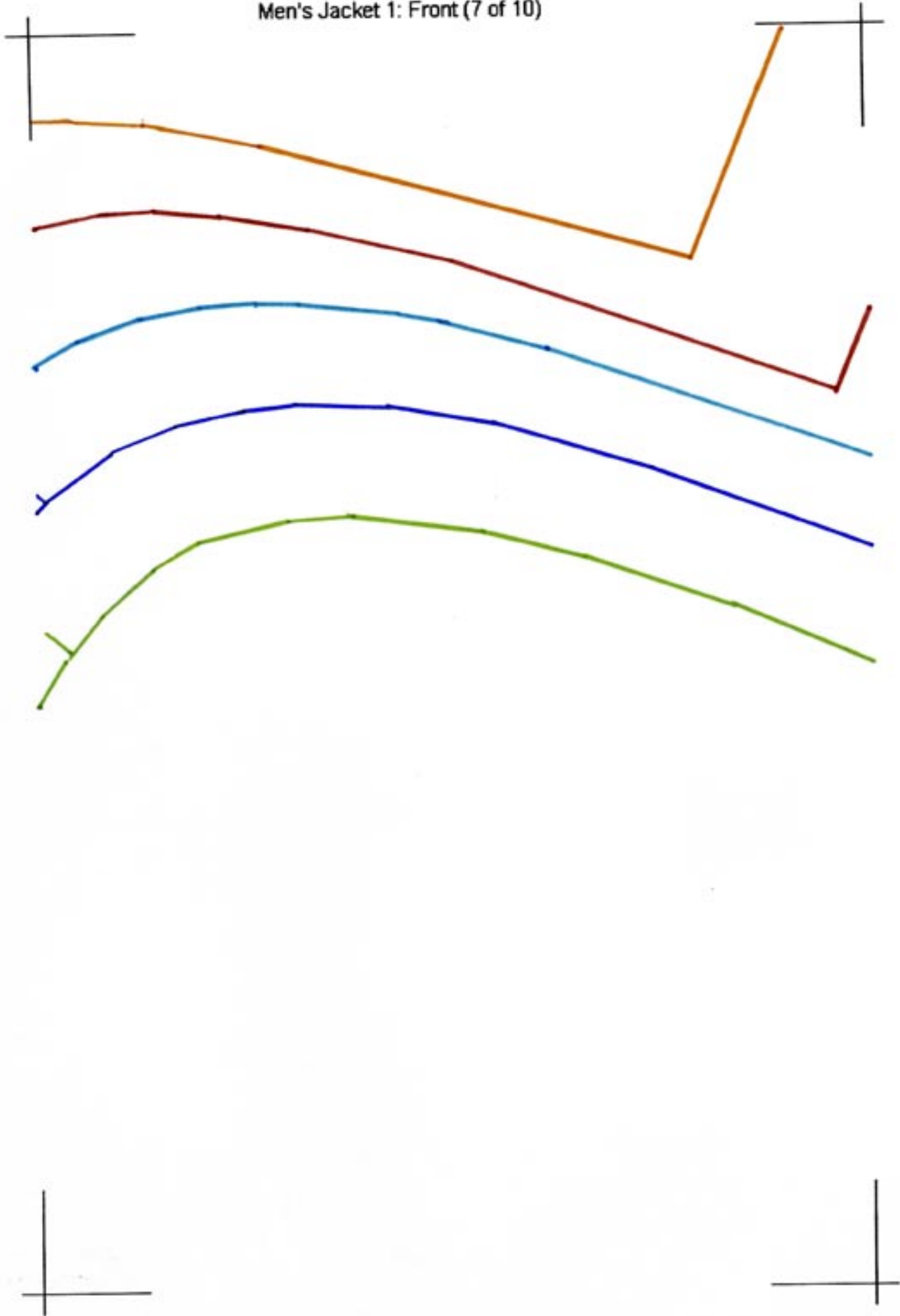
Men's Jacket 1: Front (6 of 10)



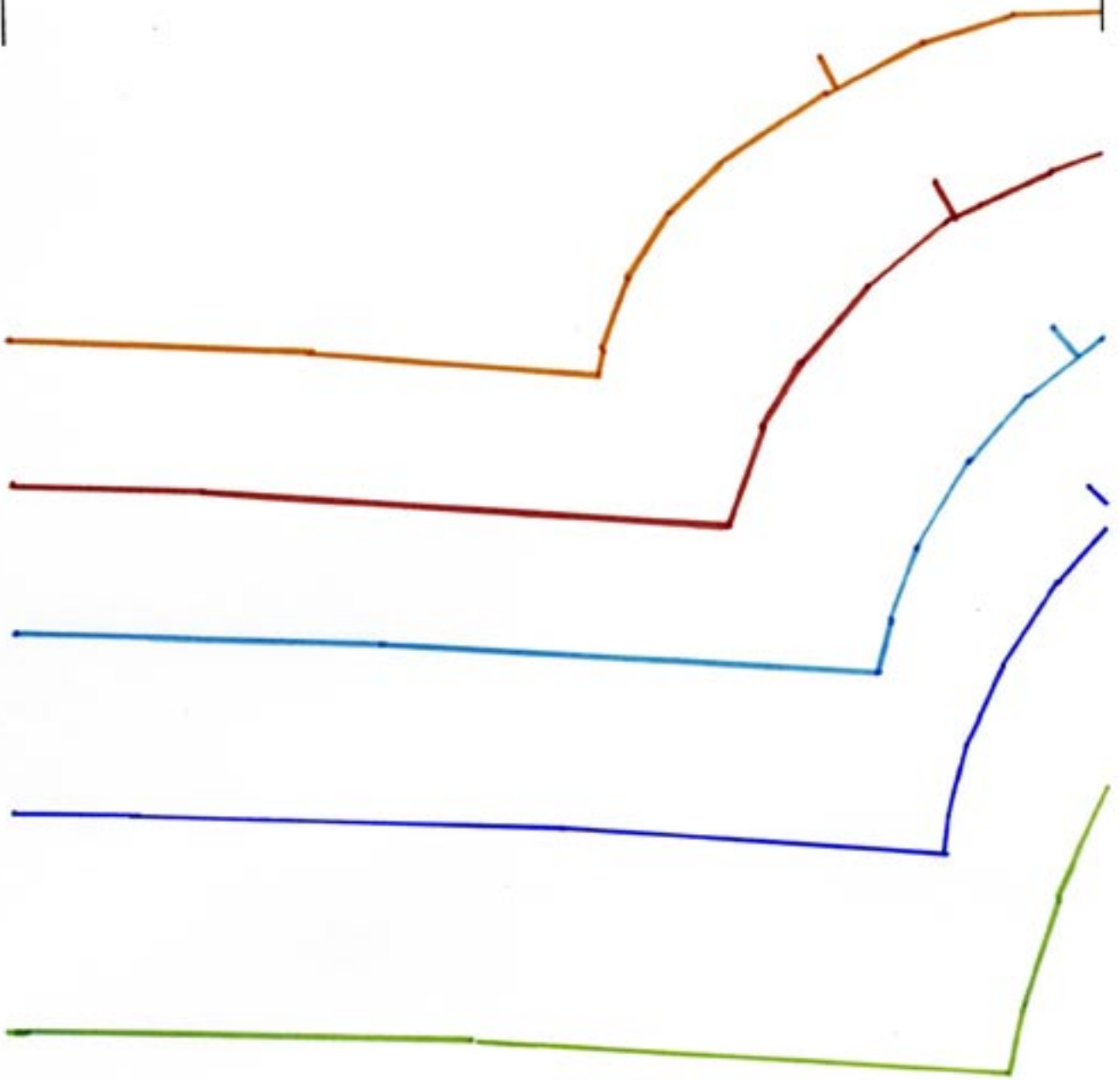
74x



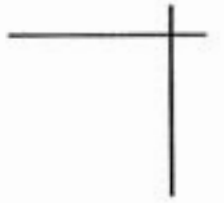
Men's Jacket 1: Front (7 of 10)



Men's Jacket 1: Front (8 of 10)



Men's Jacket 1: Front (9 of 10)



Men's Jacket 1: Front (10 of 10)

