

Fashion Freaks



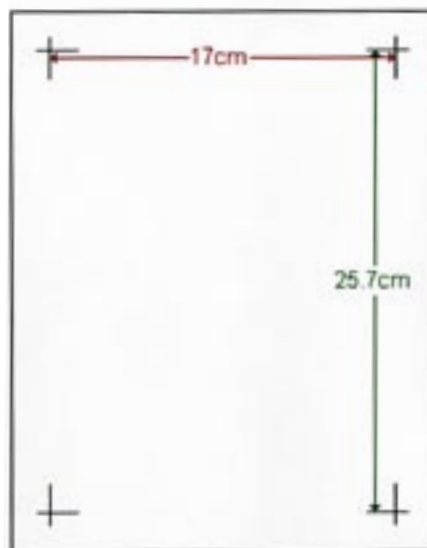
PATTERN LAYOUT

MEN'S SUITSTYLE JACKET - CURVED BACK

This is how the pattern pieces should go together to form the total pattern for the curved back piece of the men's suitstyle jacket.

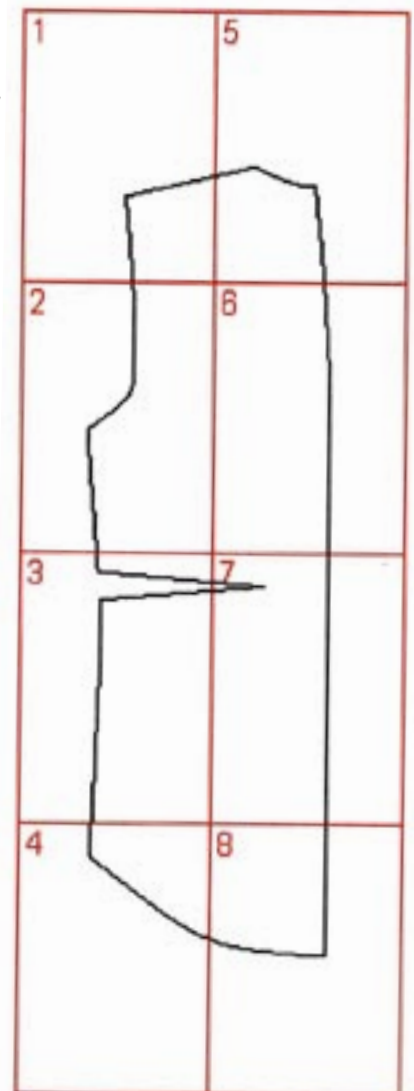
Each paper in this pdf-file contains a numbered section from this pattern.

You shall put them together by matching the 'corner hooks' with each other.



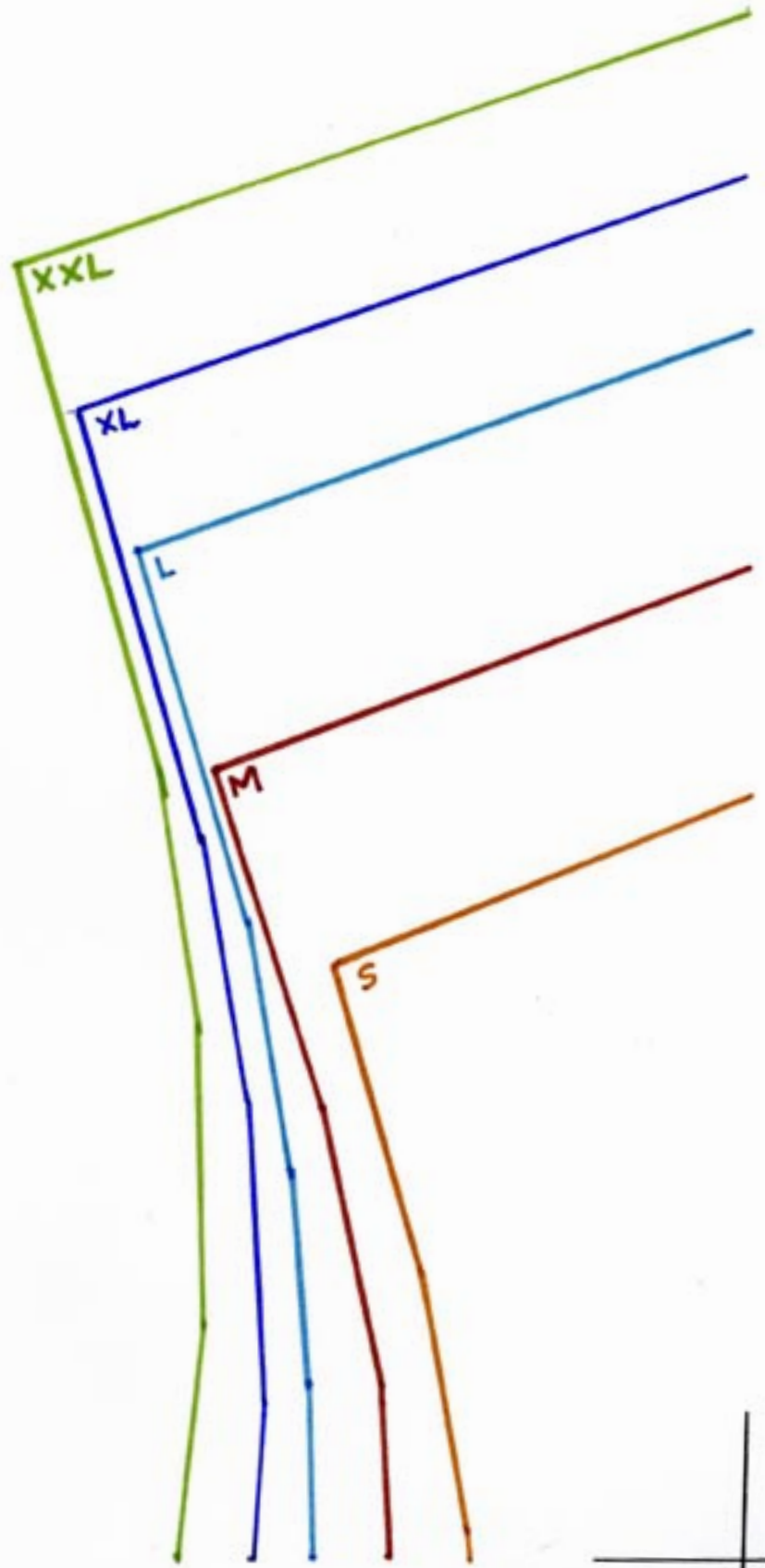
Remember to print out on A4 paper (210 x 297 mm) to get the right measurements for your size.

Measure the distance between the 'corner hooks' to make sure you have the right size. The distance is (170 x 257 mm)

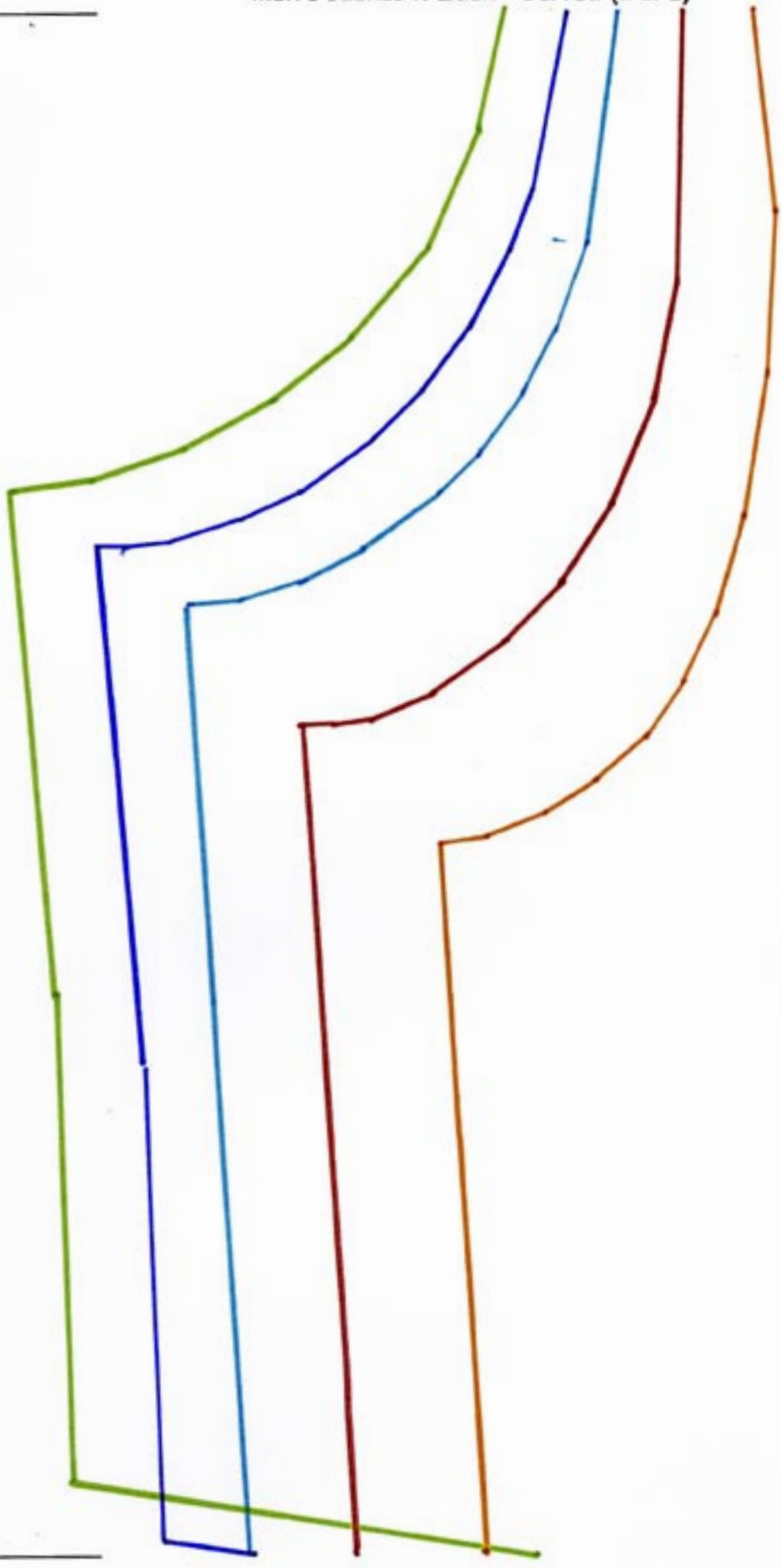


jacket in suitstyle curved back

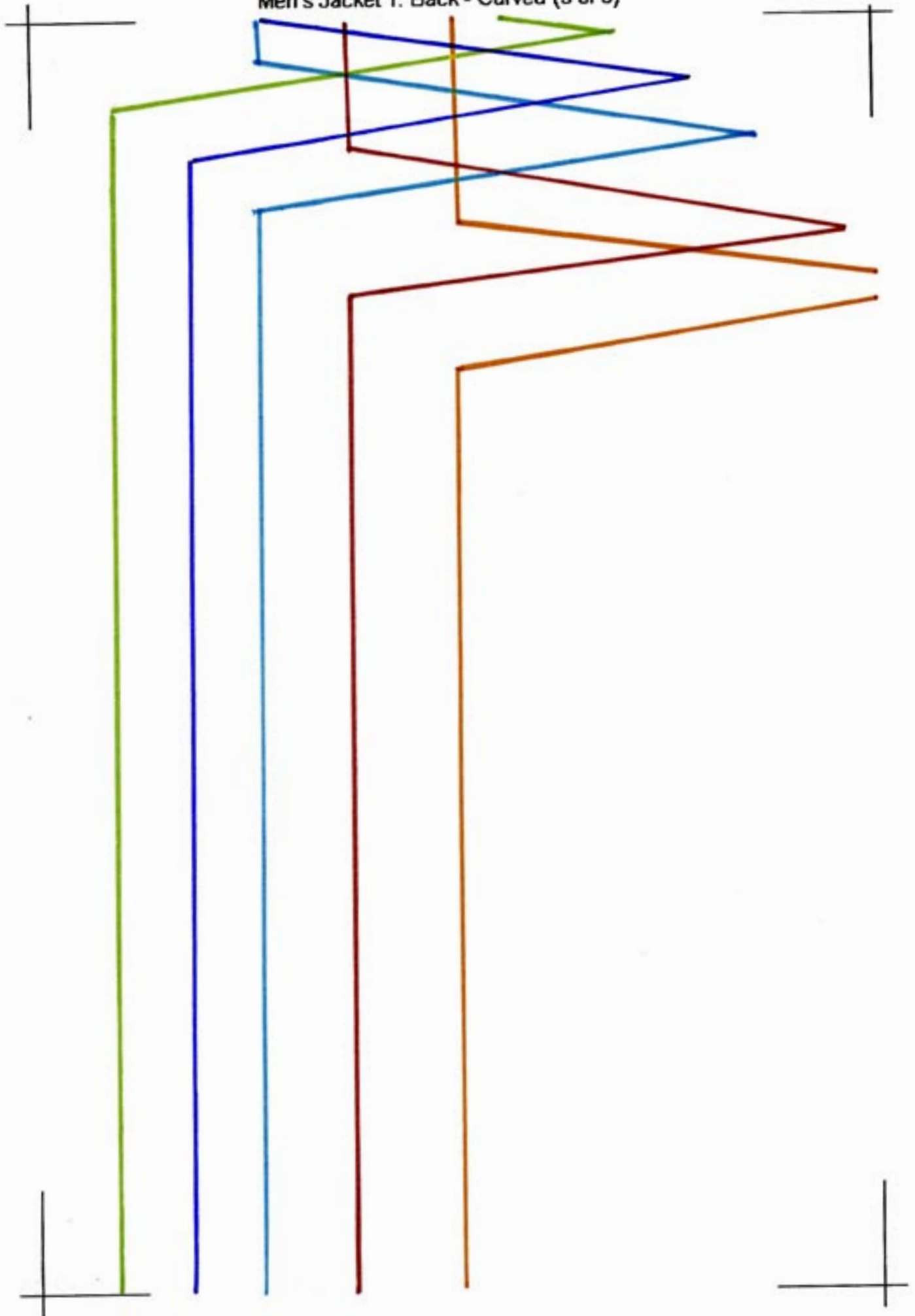
Men's Jacket 1: Back - Curved (1 of 8)



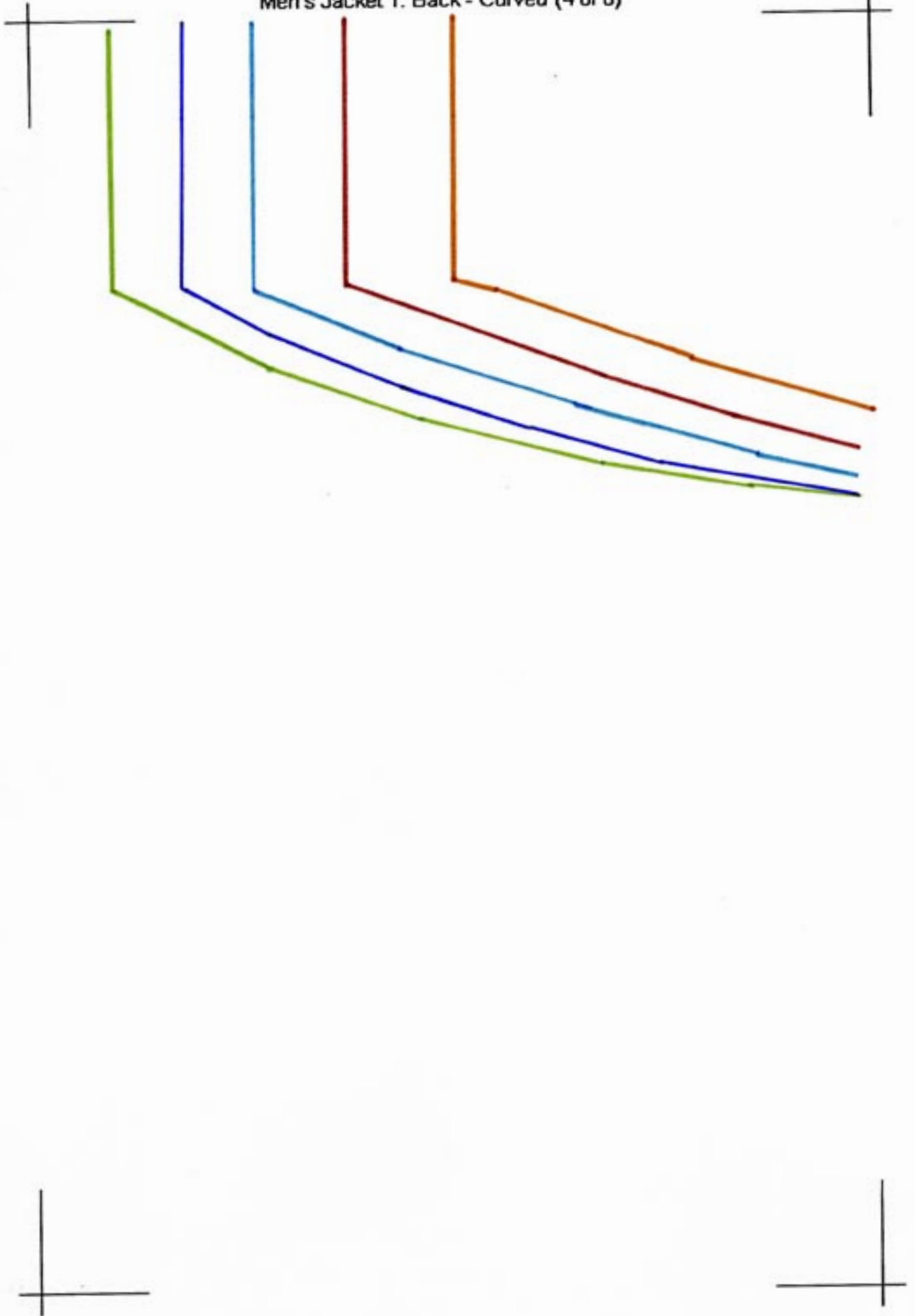
Men's Jacket 1: Back - Curved (2 of 8)



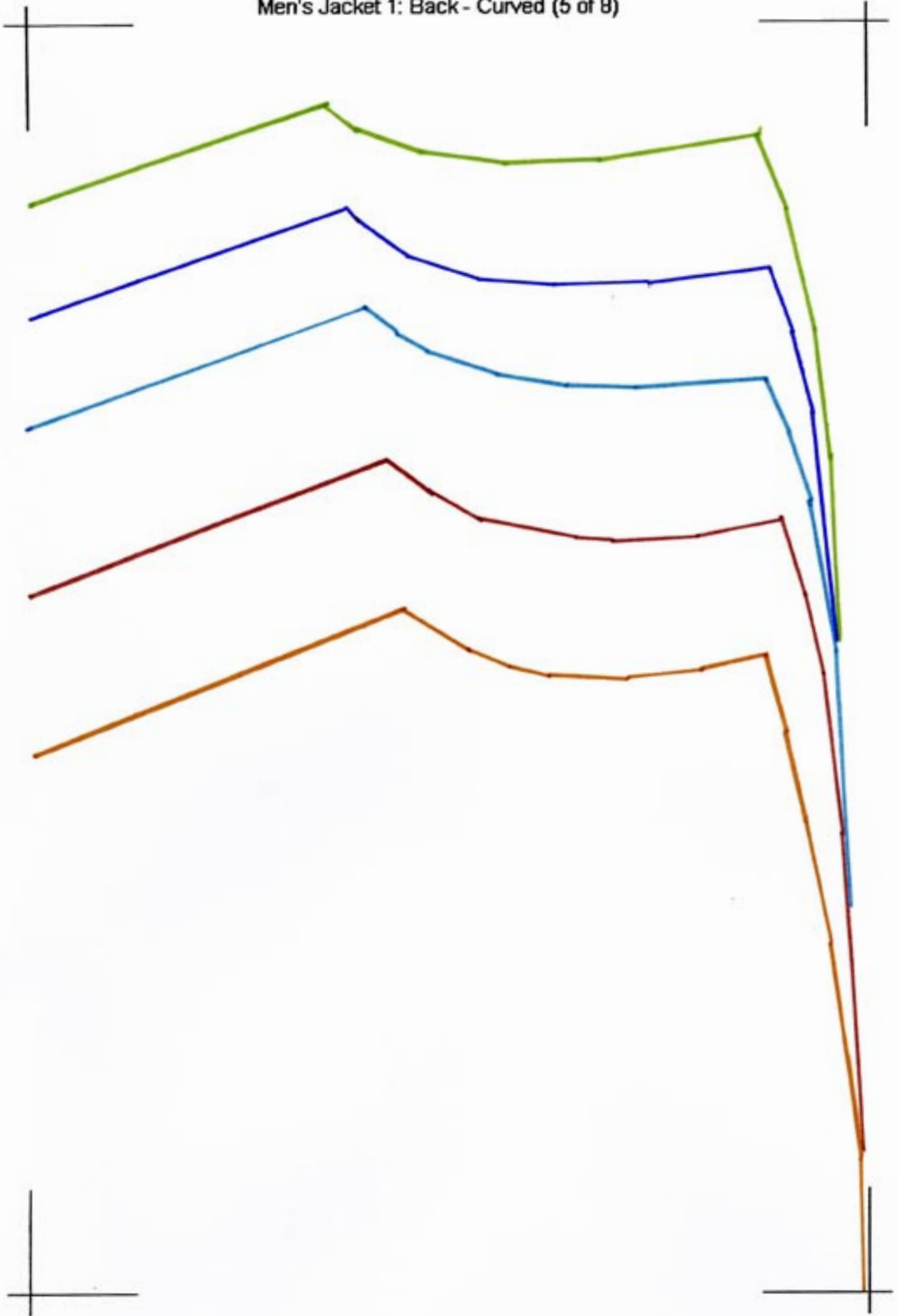
Men's Jacket 1: Back - Curved (3 of 8)



Men's Jacket 1: Back - Curved (4 of 8)



Men's Jacket 1: Back - Curved (5 of 8)



Men's Jacket 1: Back - Curved (6 of 8)



Run of fabric



Men's Jacket 1: Back - Curved (7 of 8)



Men's Jacket 1: Back - Curved (8 of 8)

