

Fashion Freaks



PATTERN LAYOUT

MEN'S SUITSTYLE JACKET - CURVED SLEEVE

This is how the pattern pieces should go together to form the two patterns that form curved sleeve of the men's suitstyle jacket.



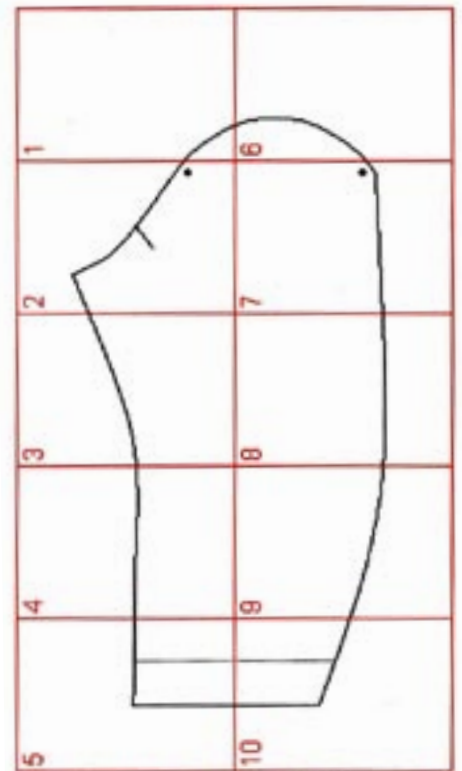
jacket in suitstyle curved sleeve 1

Each paper in this pdf-file contains a numbered section from one of these patterns.

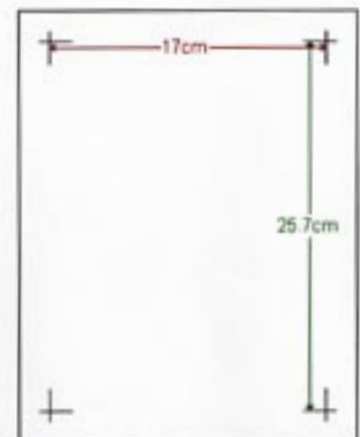
You shall put them together by matching the 'corner hooks' with each other.

Remember to print out on A4 paper (210 x297 mm) to get the right measurements for your size.

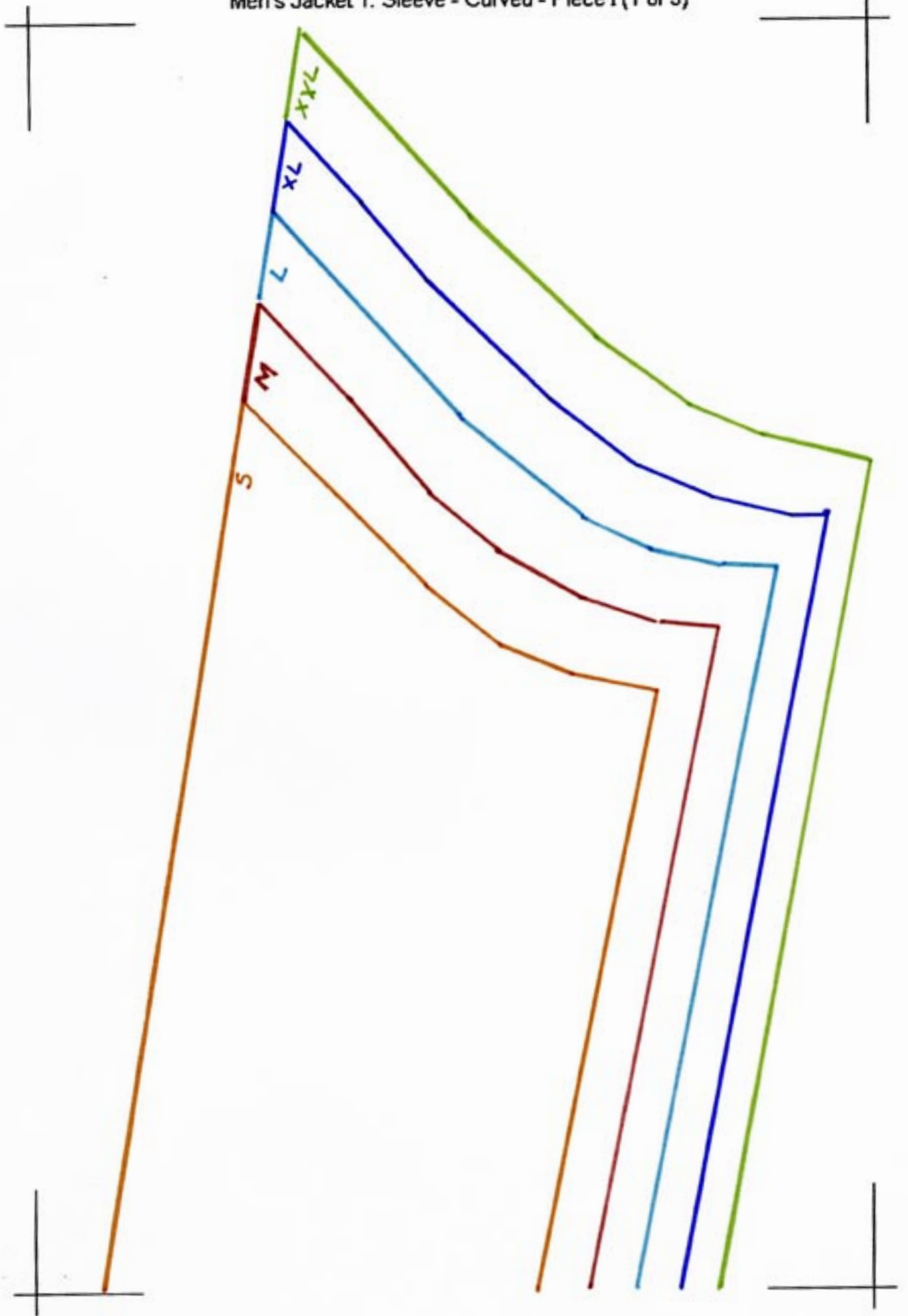
Measure the distance between the 'corner hooks' to make sure you have the right size. The distance is (170 x 257 mm)



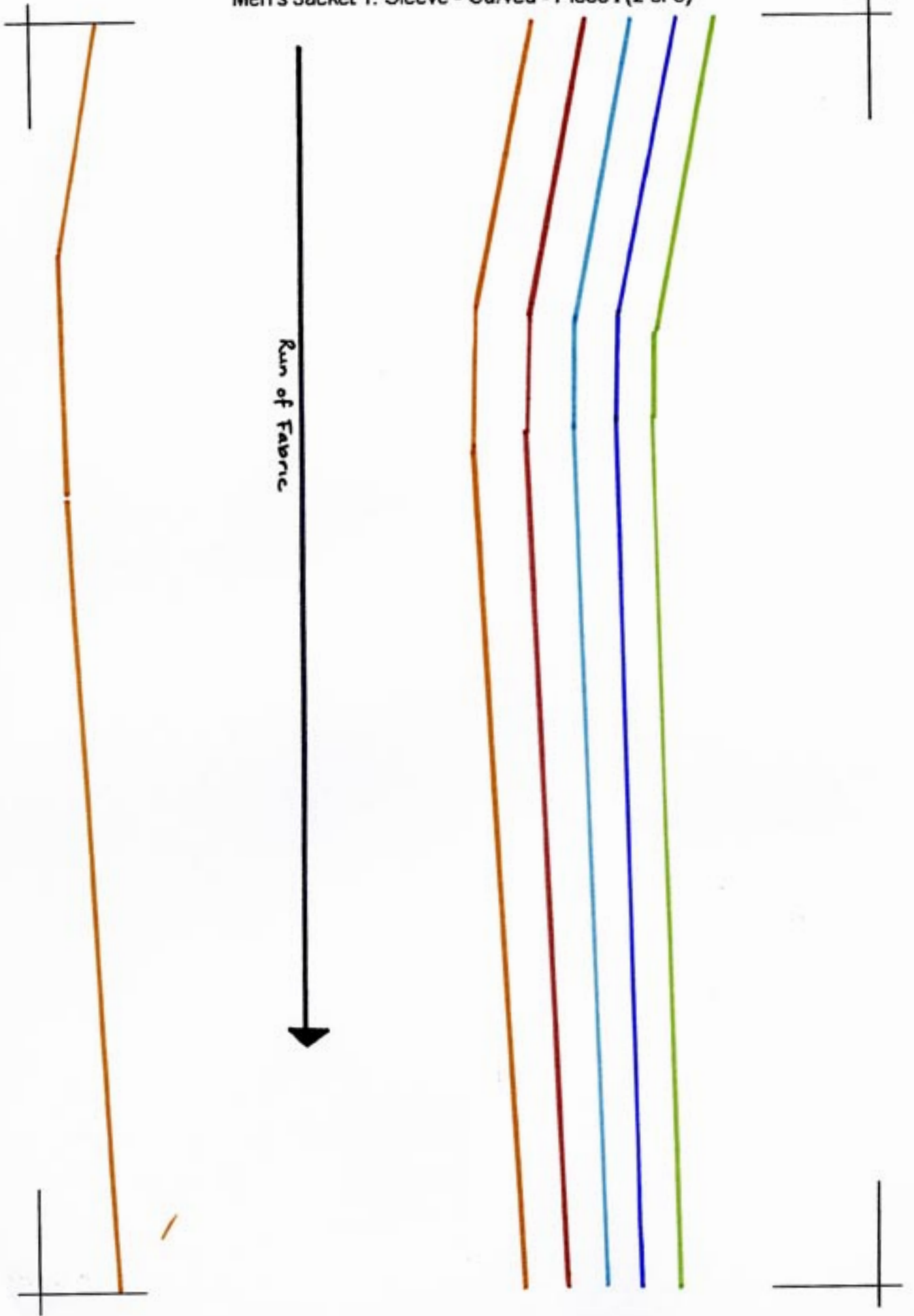
jacket in suitstyle curved sleeve 2



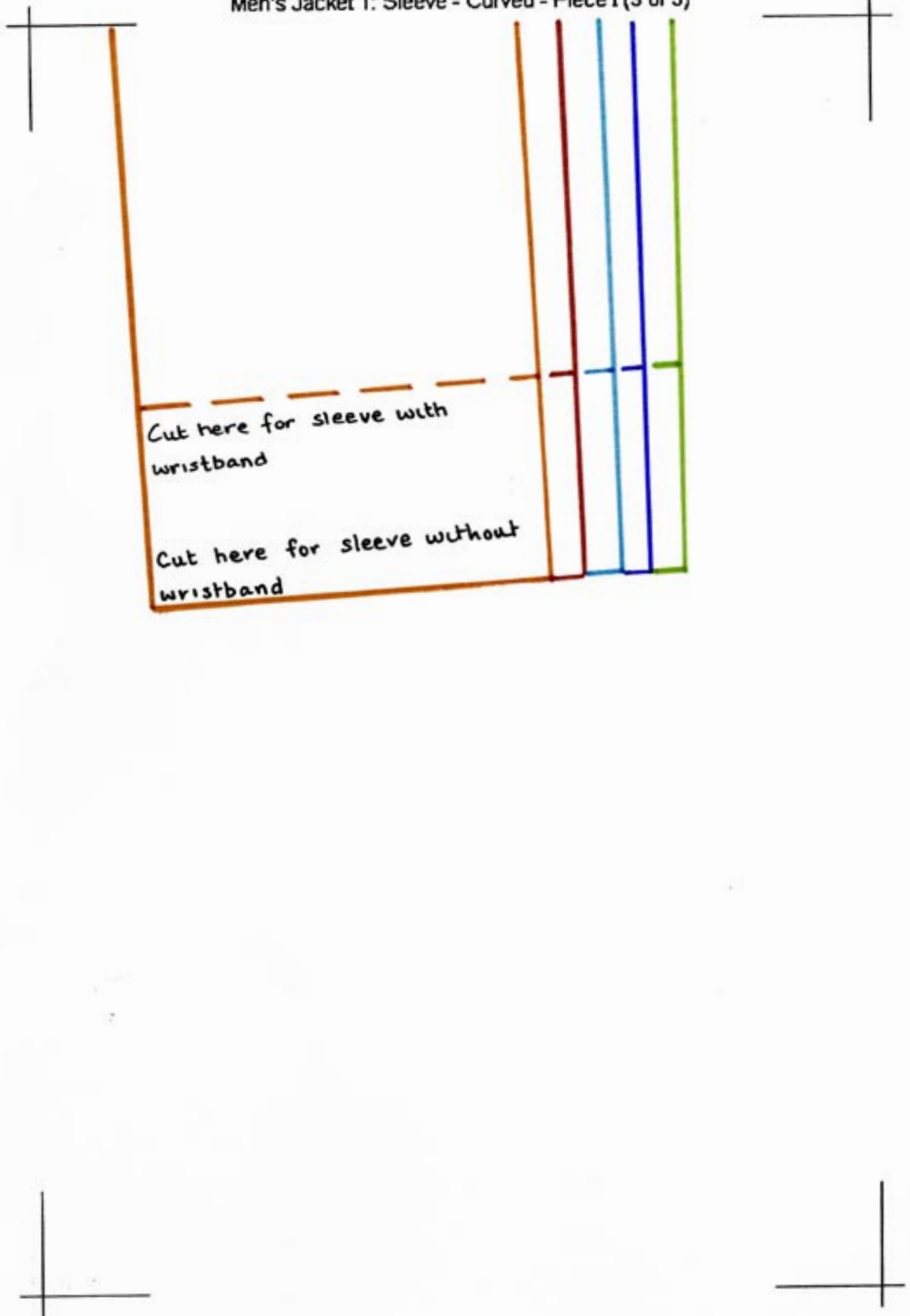
Men's Jacket 1: Sleeve - Curved - Piece I (1 of 3)



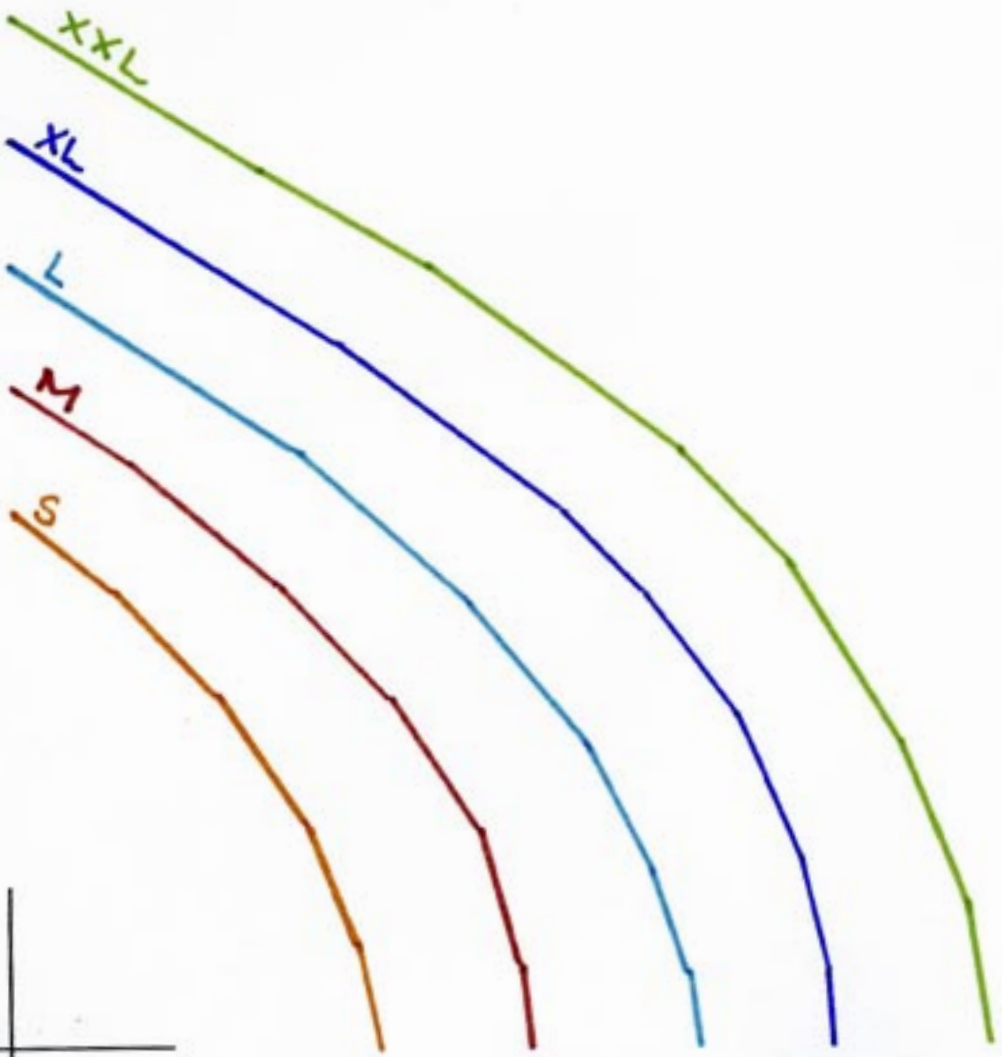
Men's Jacket 1: Sleeve - Curved - Piece I (2 of 3)



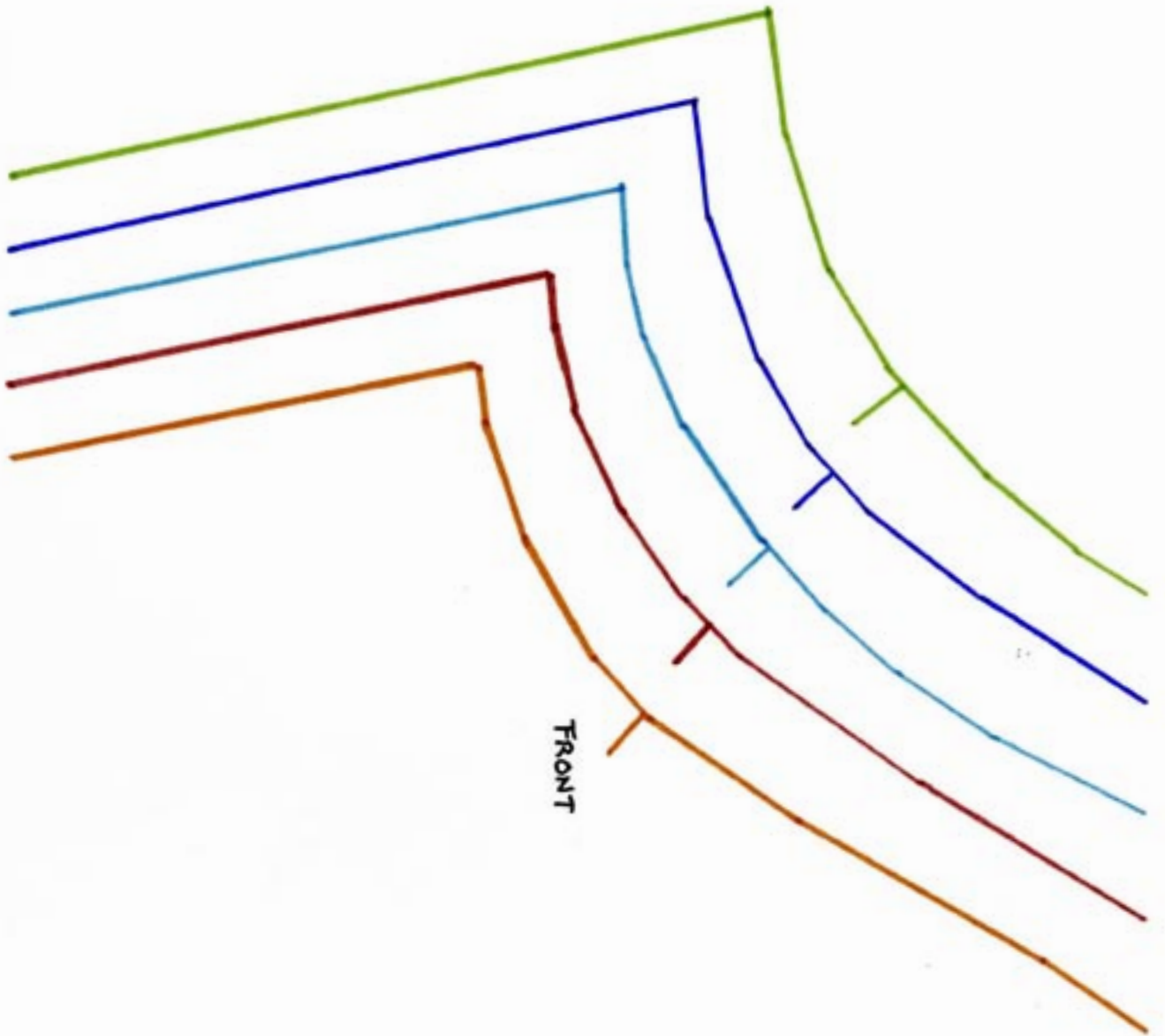
Men's Jacket 1: Sleeve - Curved - Piece I (3 of 3)



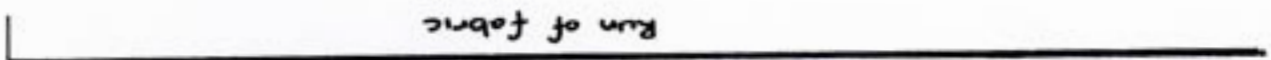
Men's Jacket 1: Sleeve - Curved - Piece II (1 of 10)



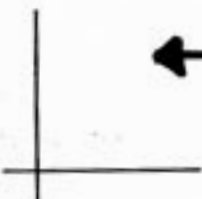
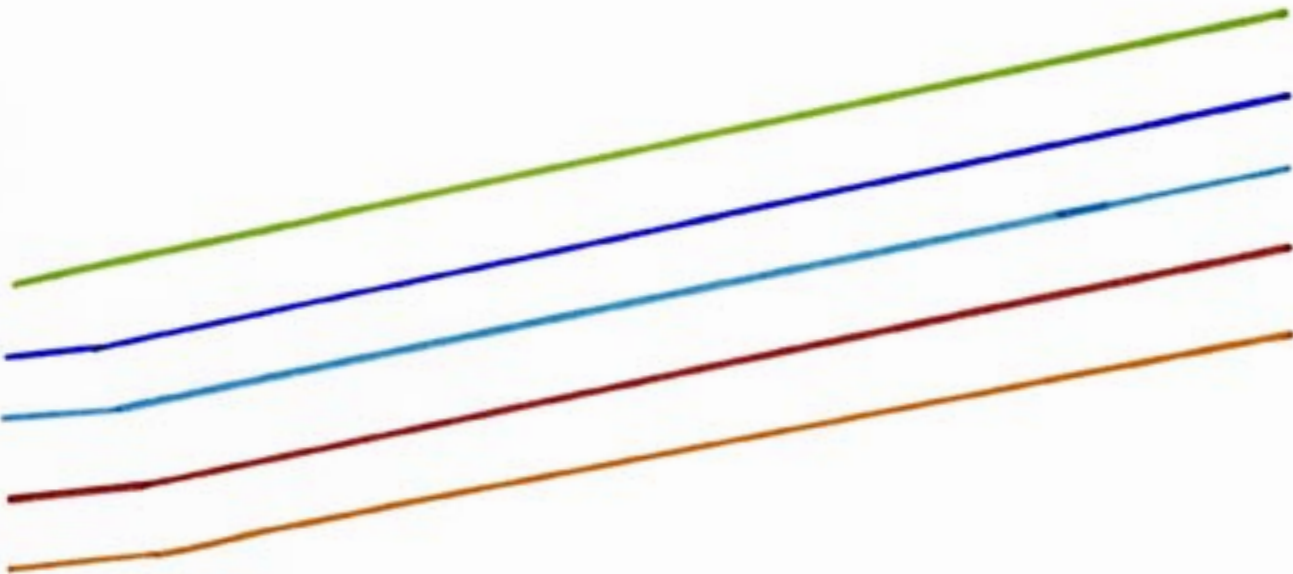
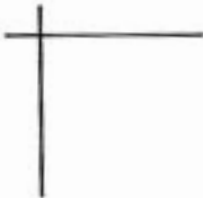
Men's Jacket 1: Sleeve - Curved - Piece II (2 of 10)



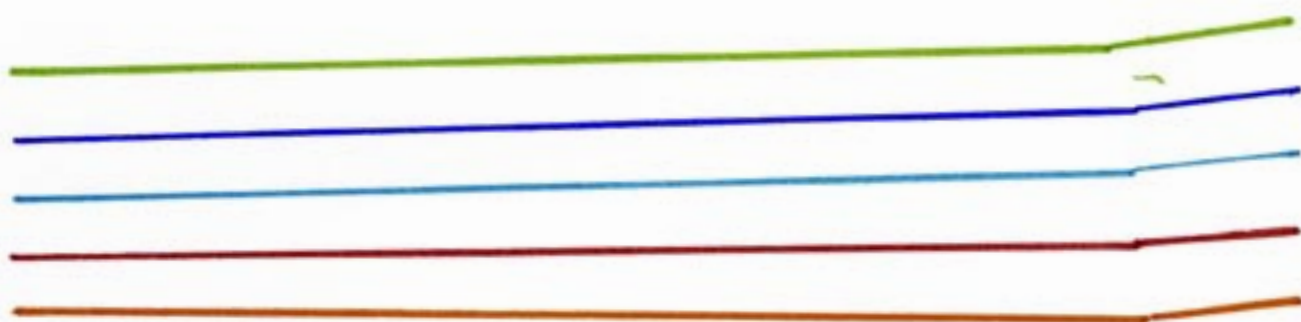
Run of fabric



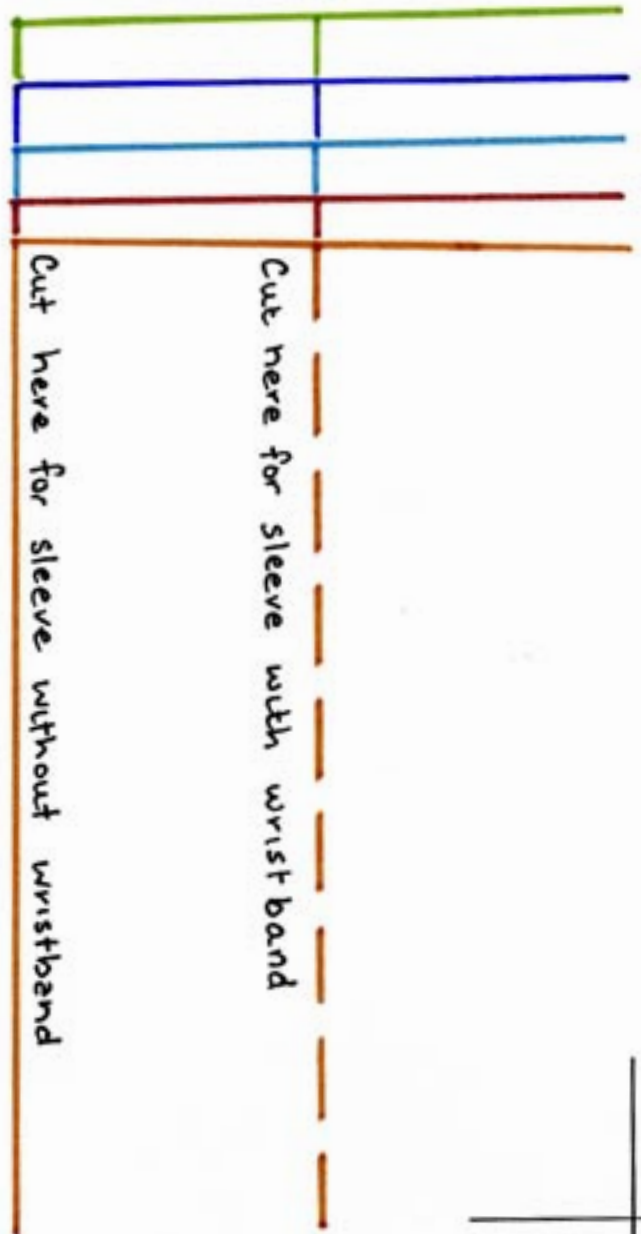
Men's Jacket 1: Sleeve - Curved - Piece II (3 of 10)



Men's Jacket 1: Sleeve - Curved - Piece II (4 of 10)

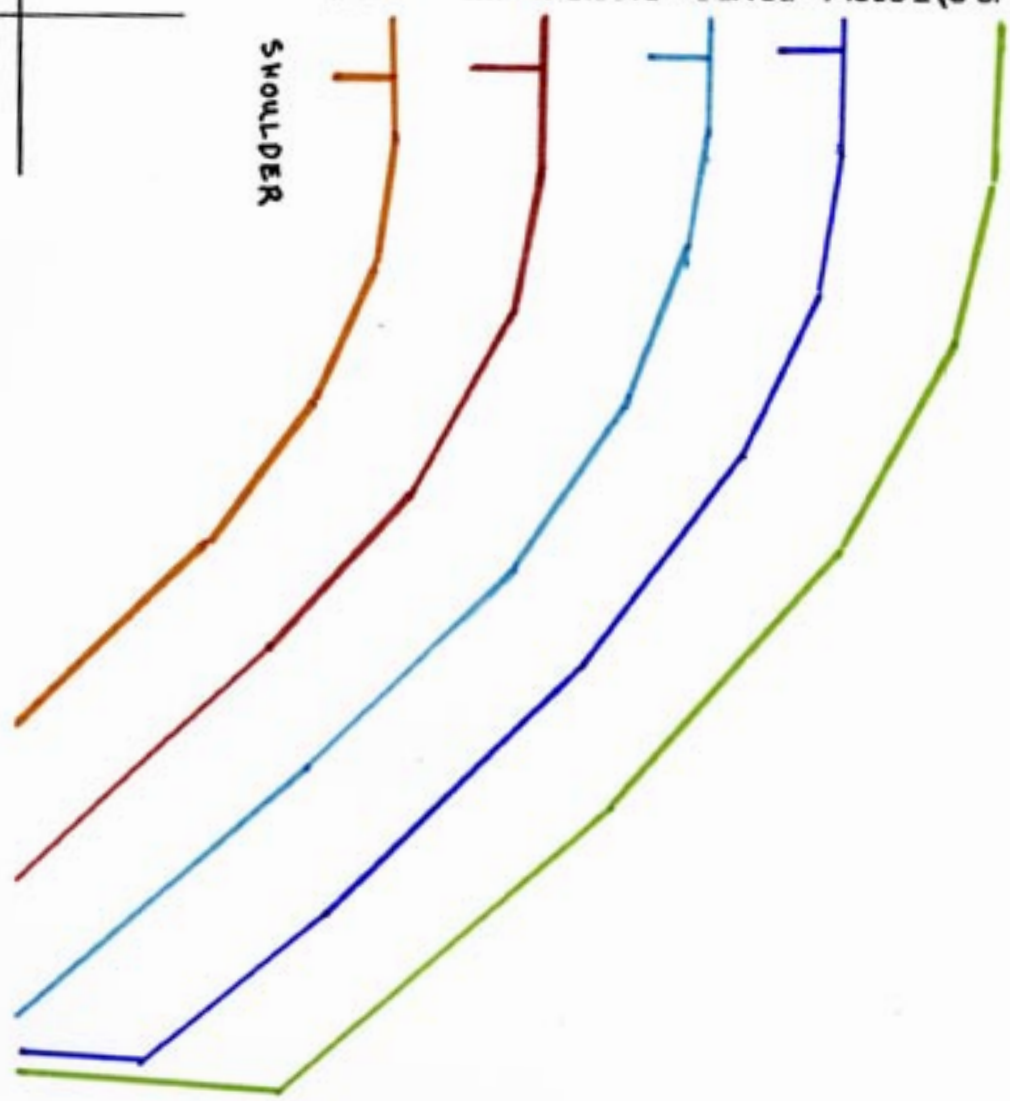


Men's Jacket 1: Sleeve - Curved - Piece II (5 of 10)



Men's Jacket 1: Sleeve - Curved - Piece II (6 of 10)

SHOULDER



Men's Jacket 1: Sleeve - Curved - Piece II (7 of 10)



Men's Jacket 1: Sleeve - Curved - Piece II (8 of 10)



Men's Jacket 1: Sleeve - Curved - Piece II (9 of 10)



Men's Jacket 1: Sleeve - Curved - Piece II (10 of 10)

