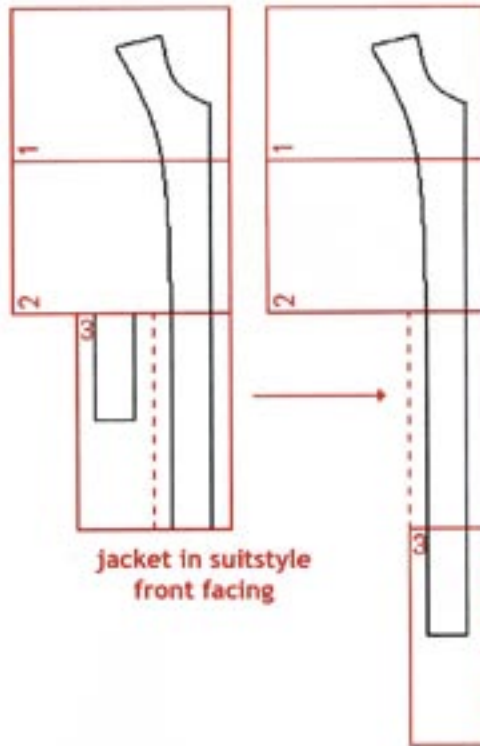


Fashion Freaks



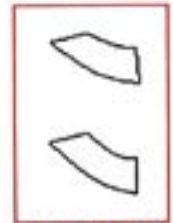
PATTERN LAYOUT

MEN'S SUITSTYLE JACKET - FRONT AND NECK FACING



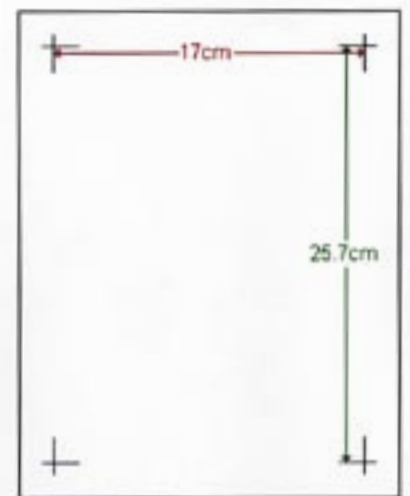
This is how you cut and piece together the pieces to form the patterns for the facing around neck and front opening.

Each paper in this pdf-file contains part of these pattern pieces.

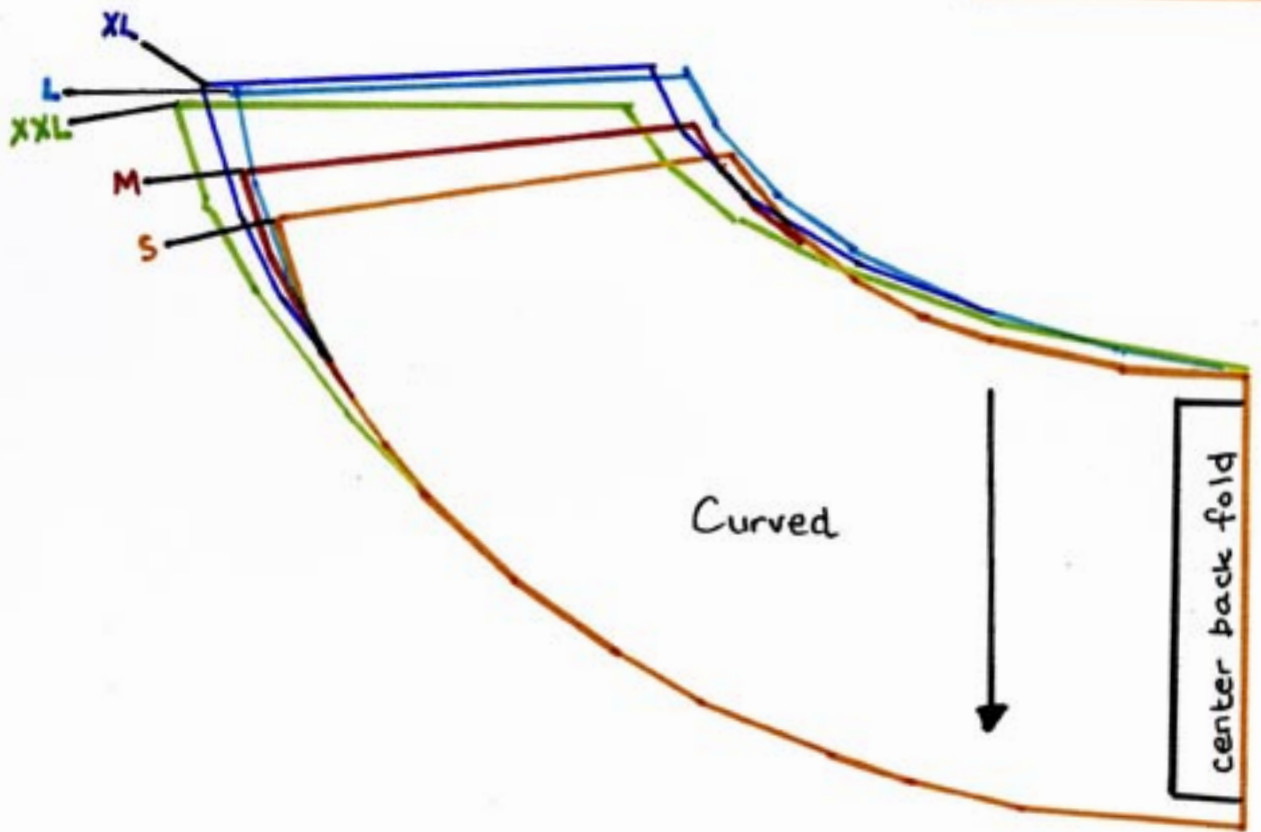
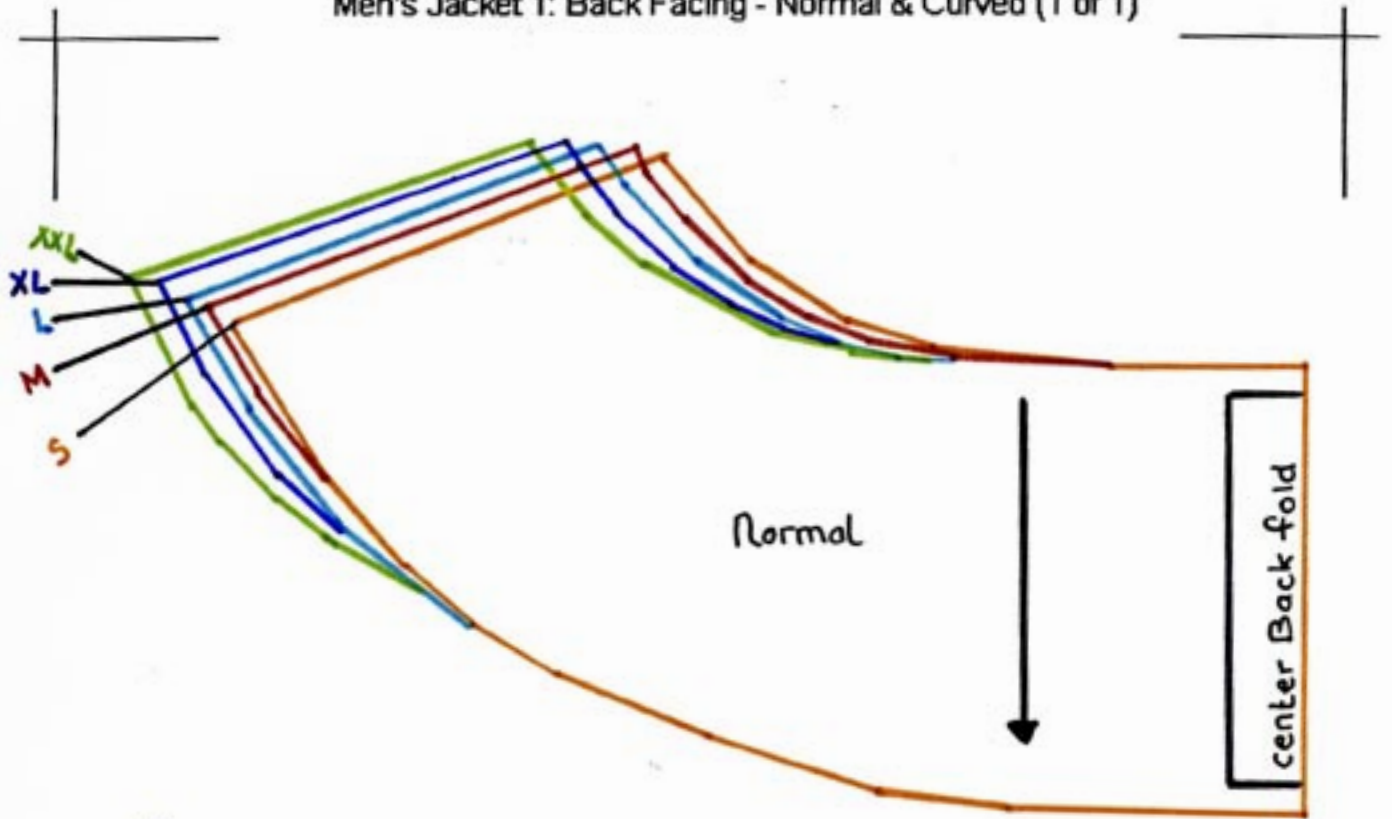


Remember to print out on A4 paper (210 x297 mm) to get the right measurements for your size.

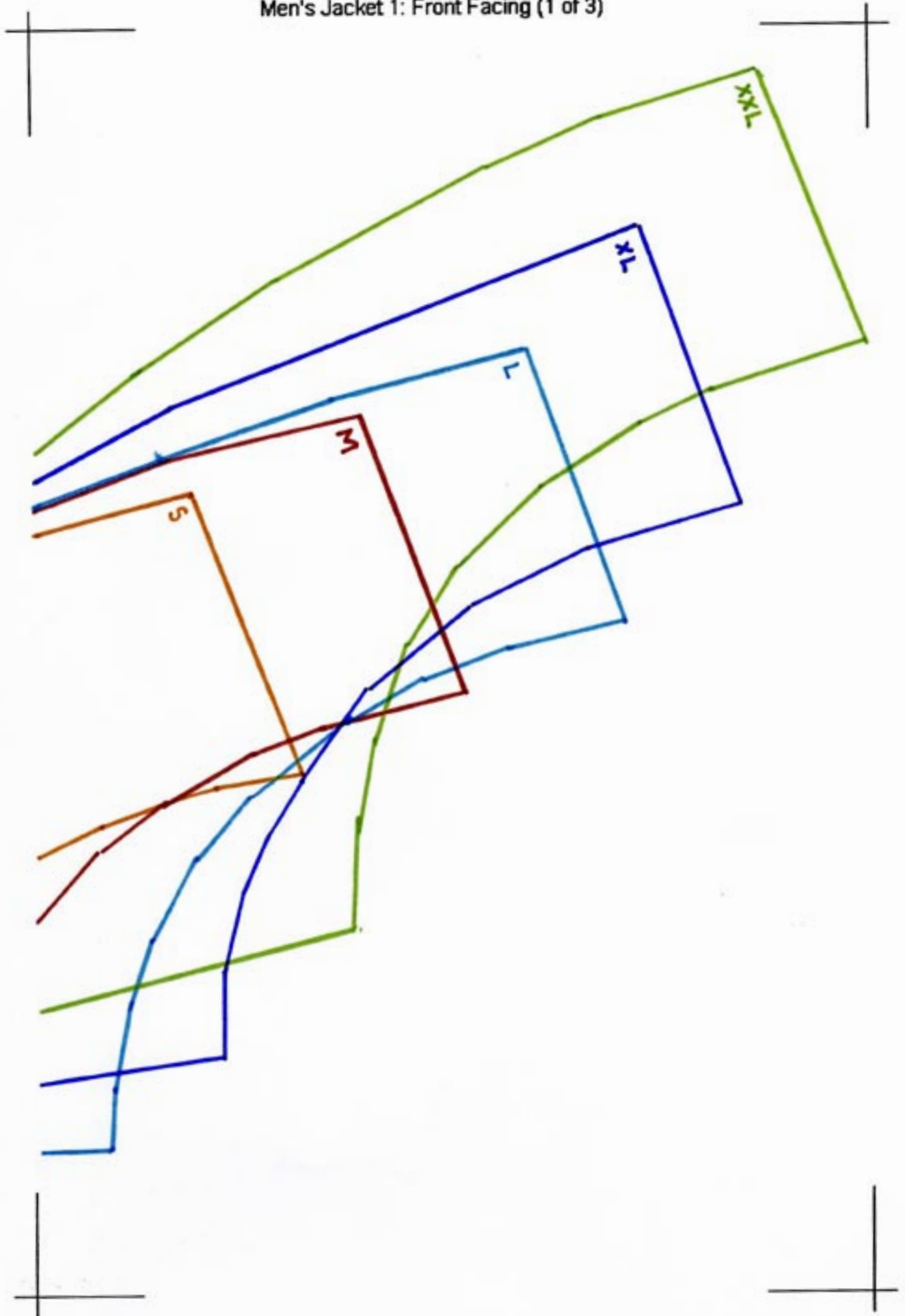
Measure the distance between the 'corner hooks' to make sure you have the right size. The distance is (170 x 257 mm)



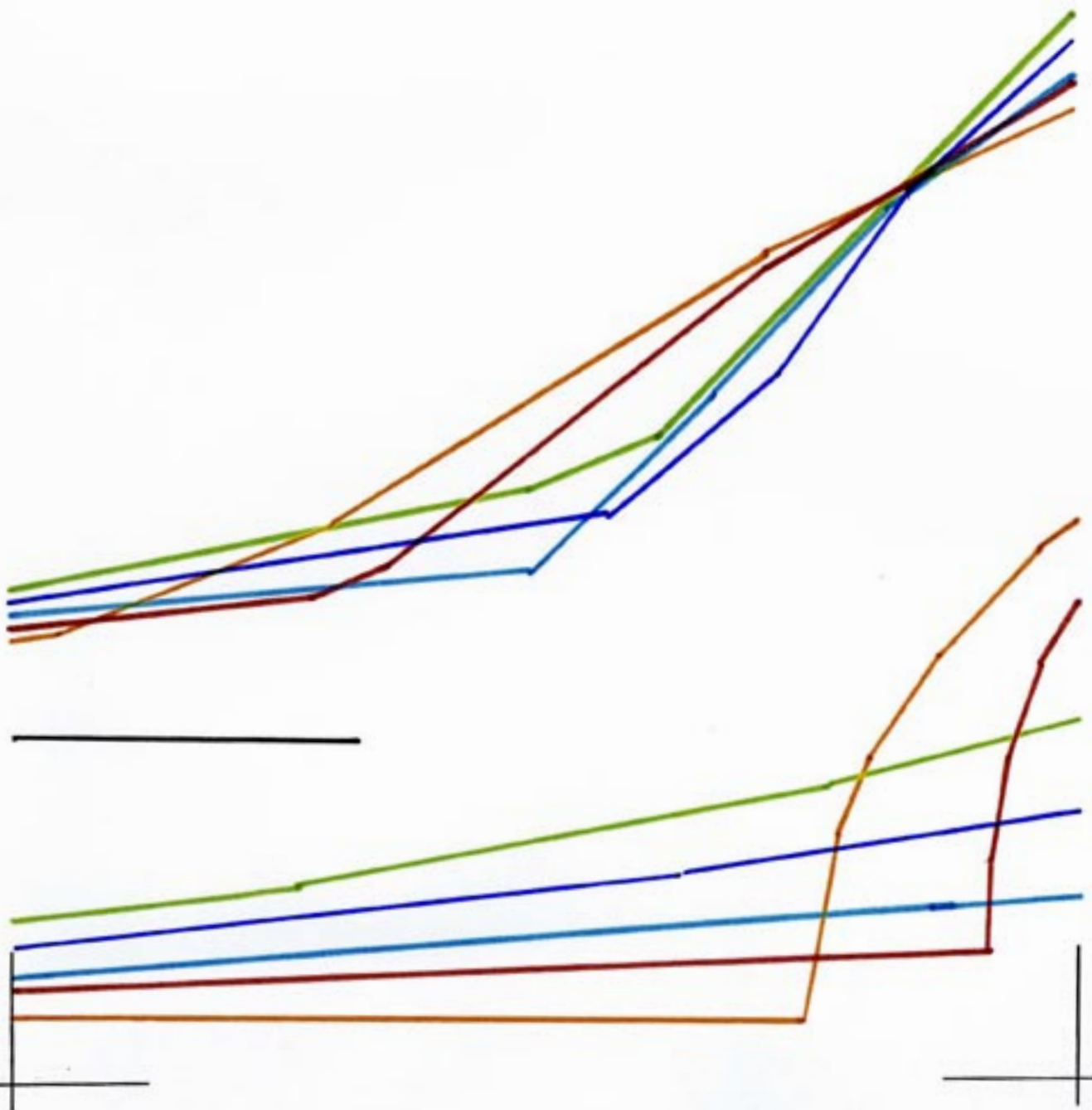
Men's Jacket 1: Back Facing - Normal & Curved (1 of 1)



Men's Jacket 1: Front Facing (1 of 3)



Men's Jacket 1: Front Facing (2 of 3)



Men's Jacket 1: Front Facing (3 of 3)

