

Fashion Freaks



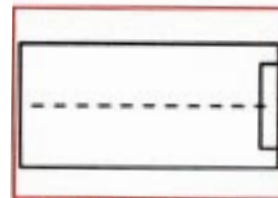
PATTERN LAYOUT

MEN'S SUITSTYLE JACKET - COLLAR & WRISTBAND

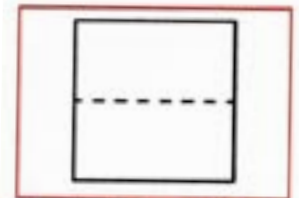
This is how you cut and piece together the pieces to form the patterns for the wristband and different collars.

All three collar alternatives are cut and pieced together in the same way.

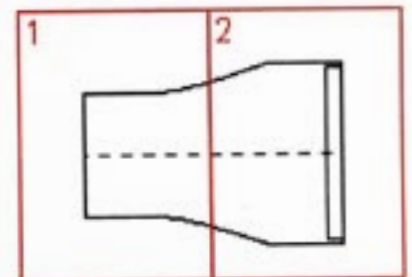
Each paper in this pdf-file contains parts of these patterns.



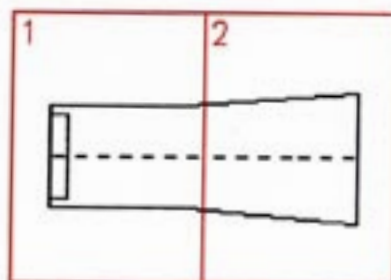
jacket in suitstyle
rib knit collar



jacket in suitstyle
rib knit wristband



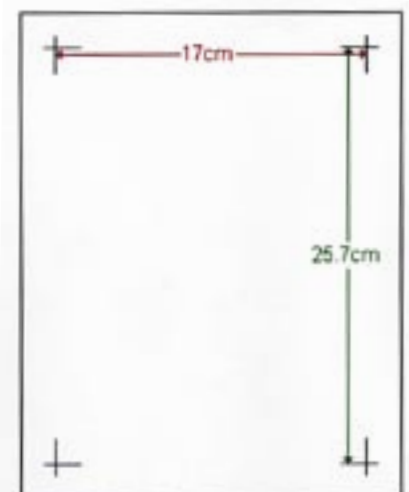
jacket in suitstyle
knit collar - high back



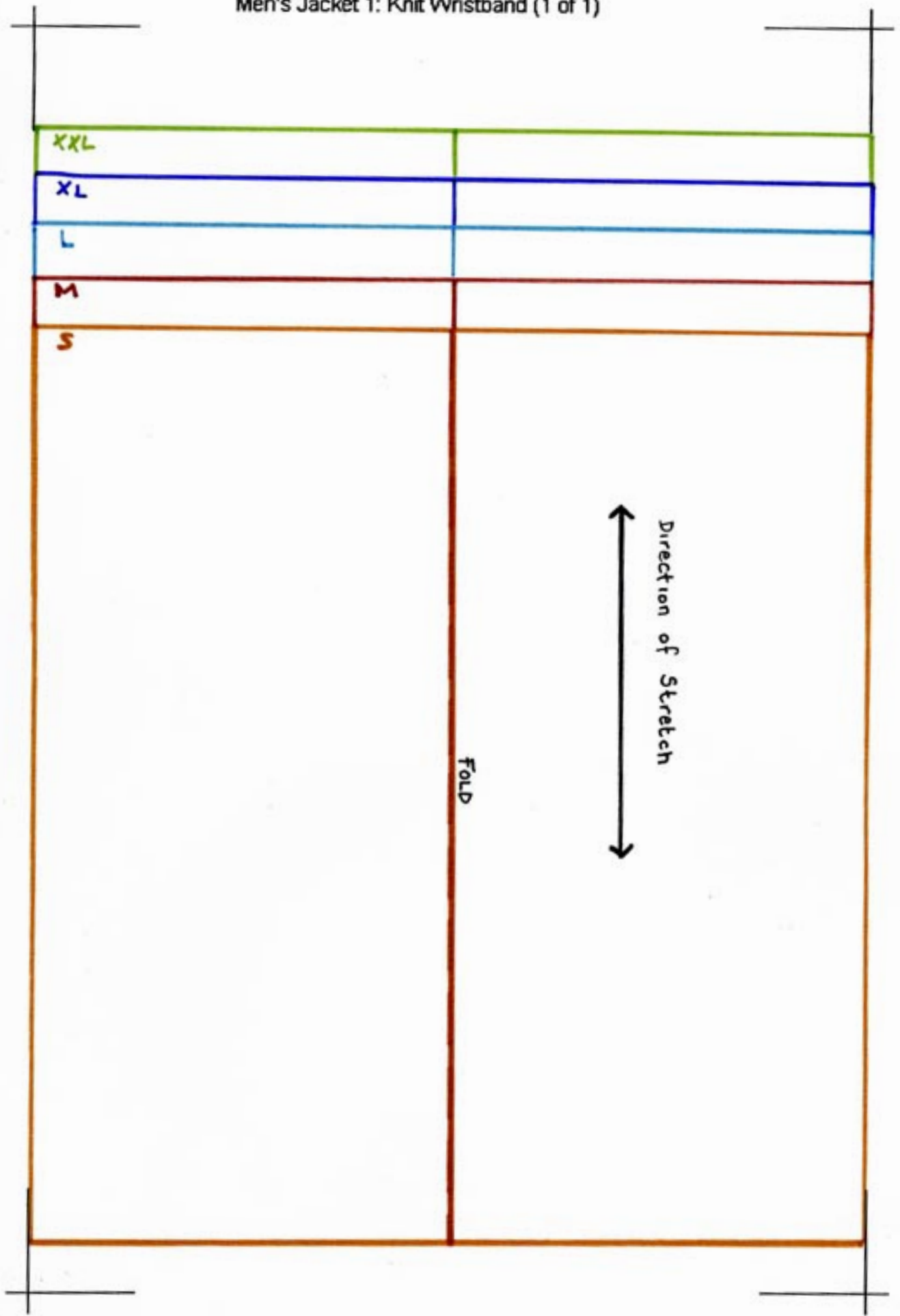
jacket in suitstyle
non knit collar

Remember to print out on A4 paper (210 x297 mm) to get the right measurements for your size.

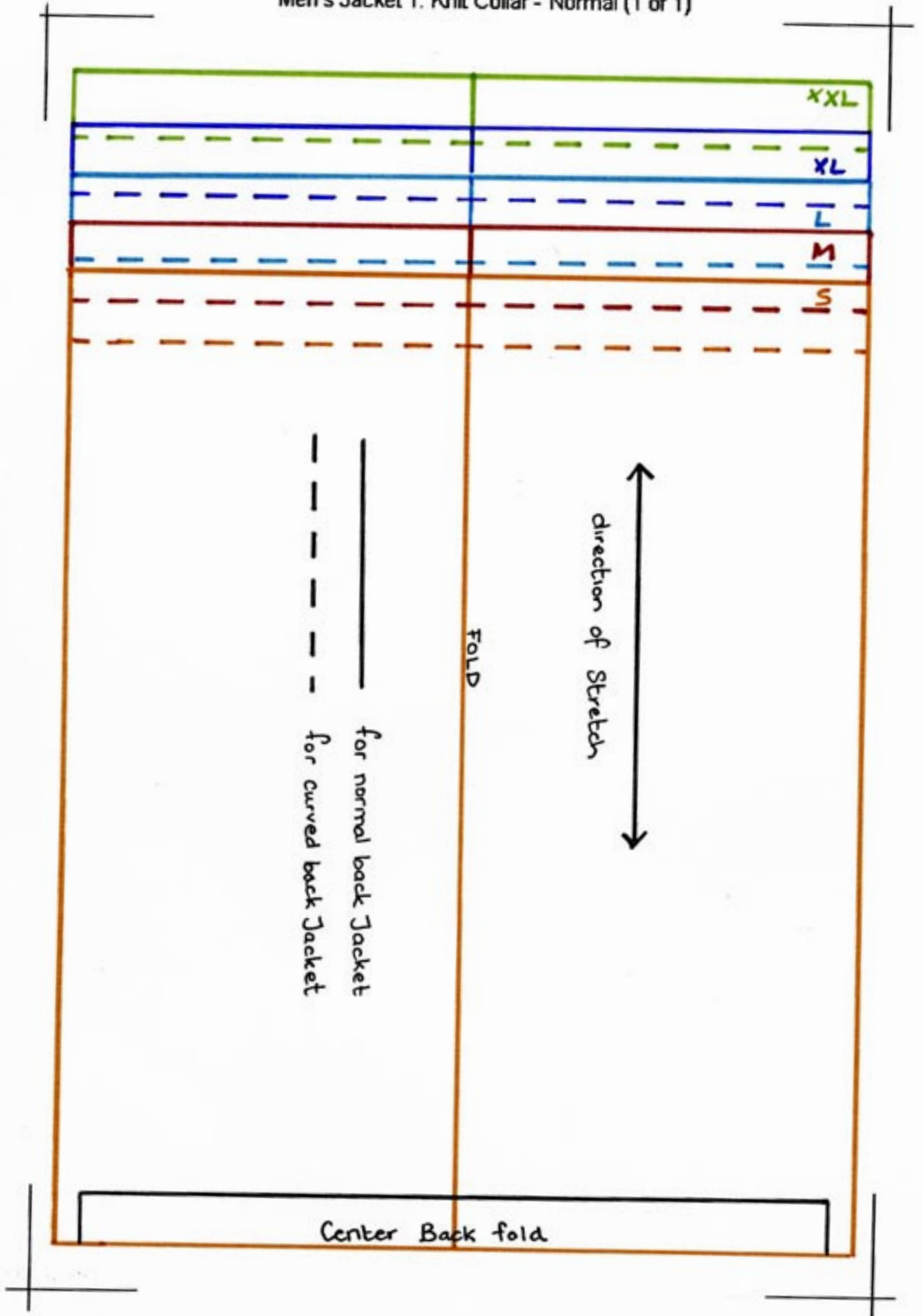
Measure the distance between the 'corner hooks' to make sure you have the right size. The distance is (170 x 257 mm)



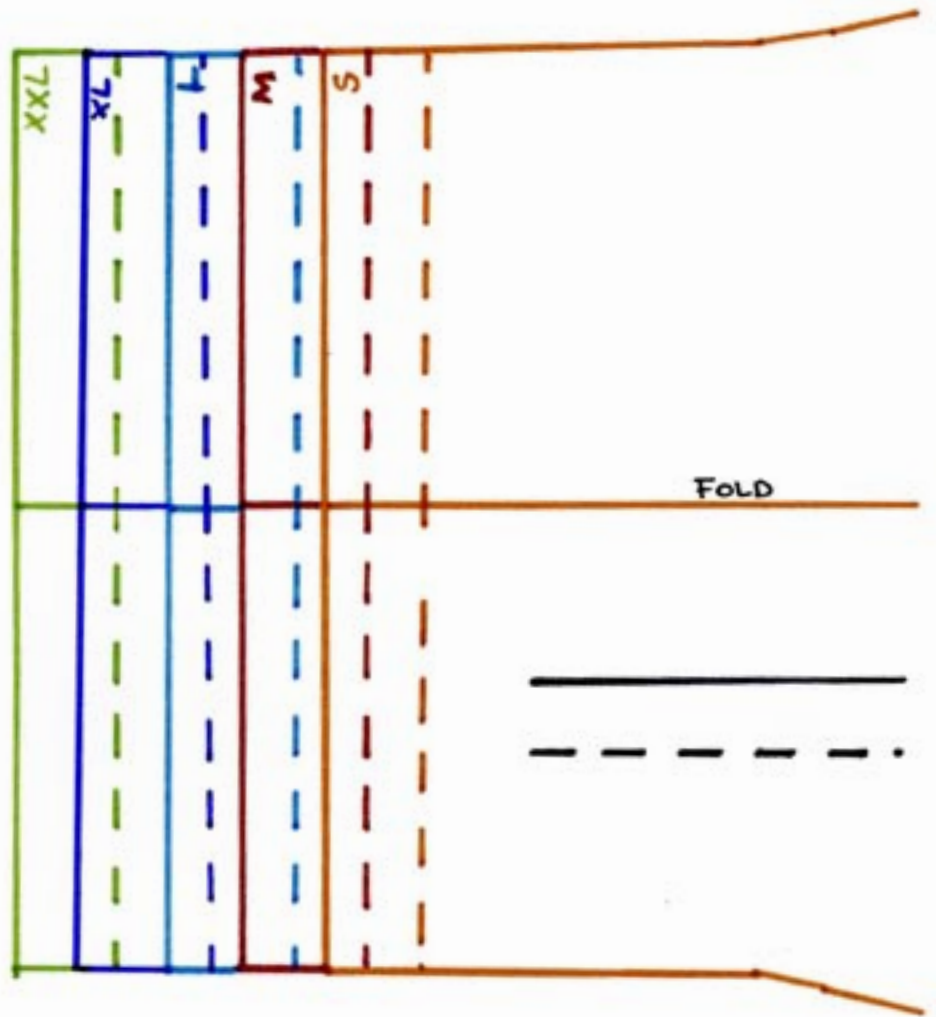
Men's Jacket 1: Knit Wristband (1 of 1)



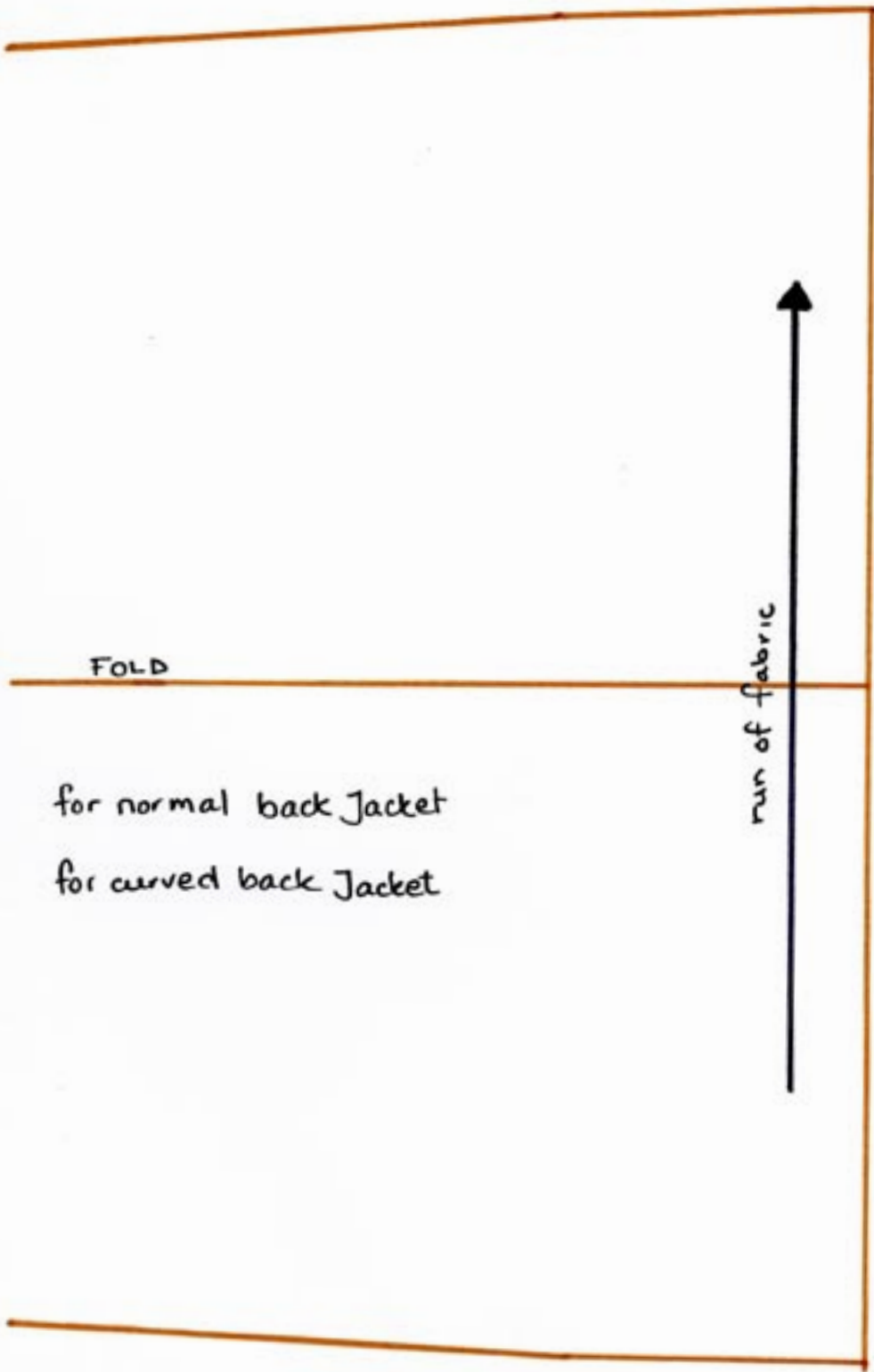
Men's Jacket 1: Knit Collar - Normal (1 of 1)



Men's Jacket 1: Knit Collar - High (1 of 2)



Men's Jacket 1: Non Knit Collar (2 of 2)



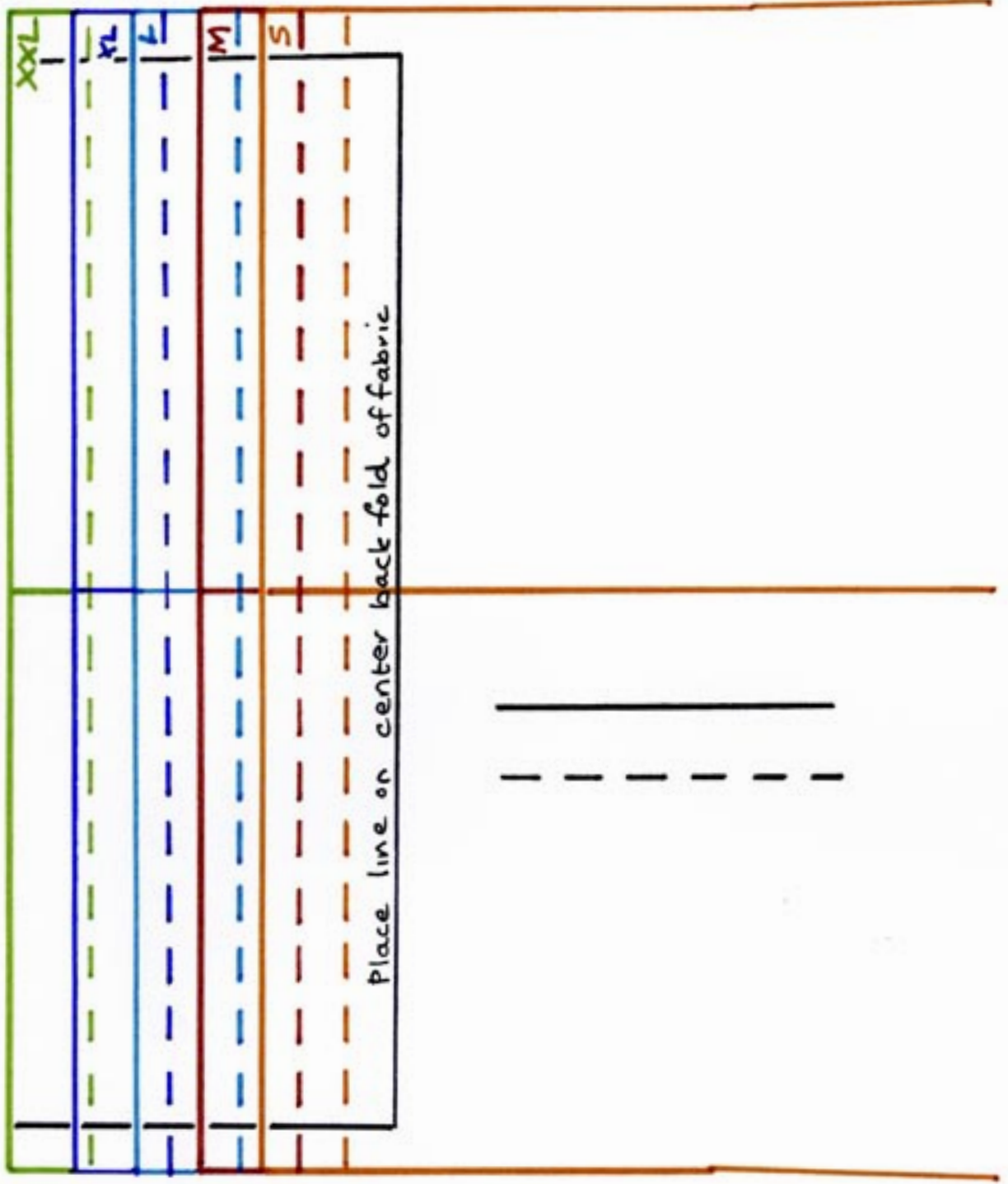
FOLD

for normal back Jacket
for curved back Jacket

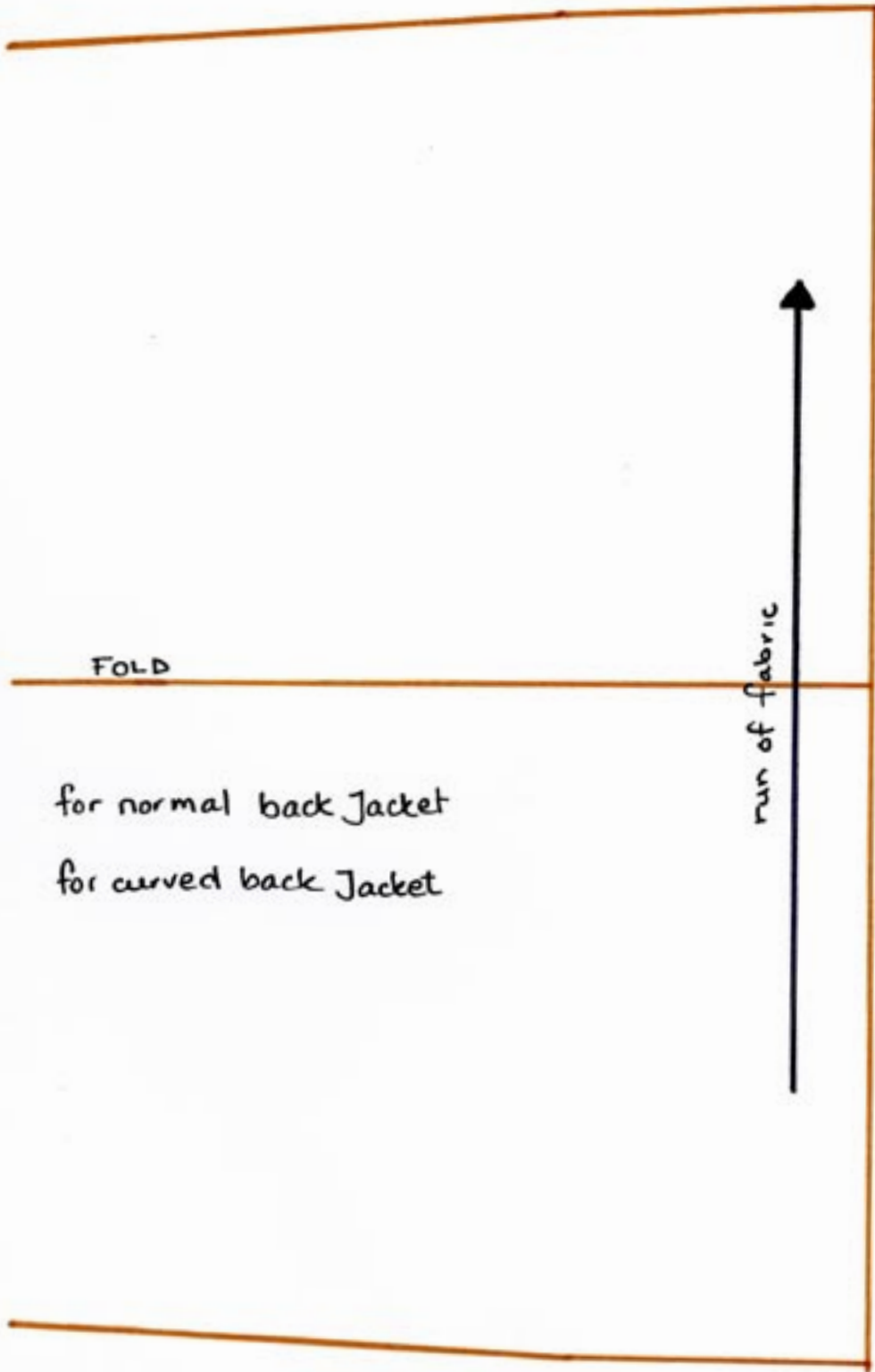
run of fabric



Men's Jacket 1: Non Knit Collar (1 of 2)



Men's Jacket 1: Non Knit Collar (2 of 2)



FOLD

for normal back Jacket

for curved back Jacket

run of fabric