

Fashion Freaks



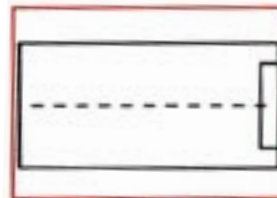
PATTERN LAYOUT

MEN'S RAGLAN SLEEVE JACKET - COLLAR & WRISTBAND

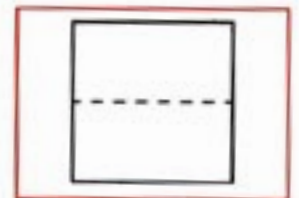
This is how you cut and piece together the pieces to form the patterns for the wristband and different collars.

All three collar alternatives are cut and pieced together in the same way.

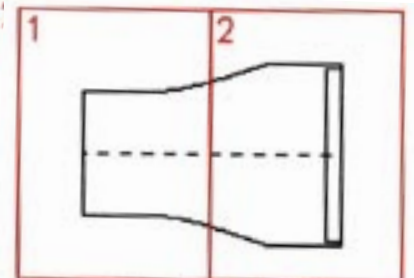
Each paper in this pdf-file contains one full pattern piece.



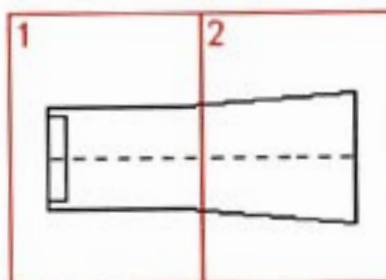
Men's Jacket 1:
Knit Collar
Normal



Men's Jacket 2:
Knit Wristband



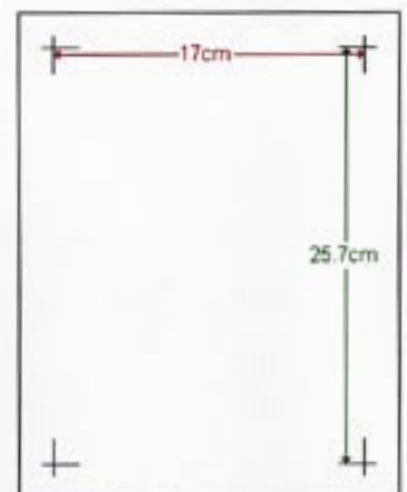
Men's Jacket 2:
Knit Collar
- High Back



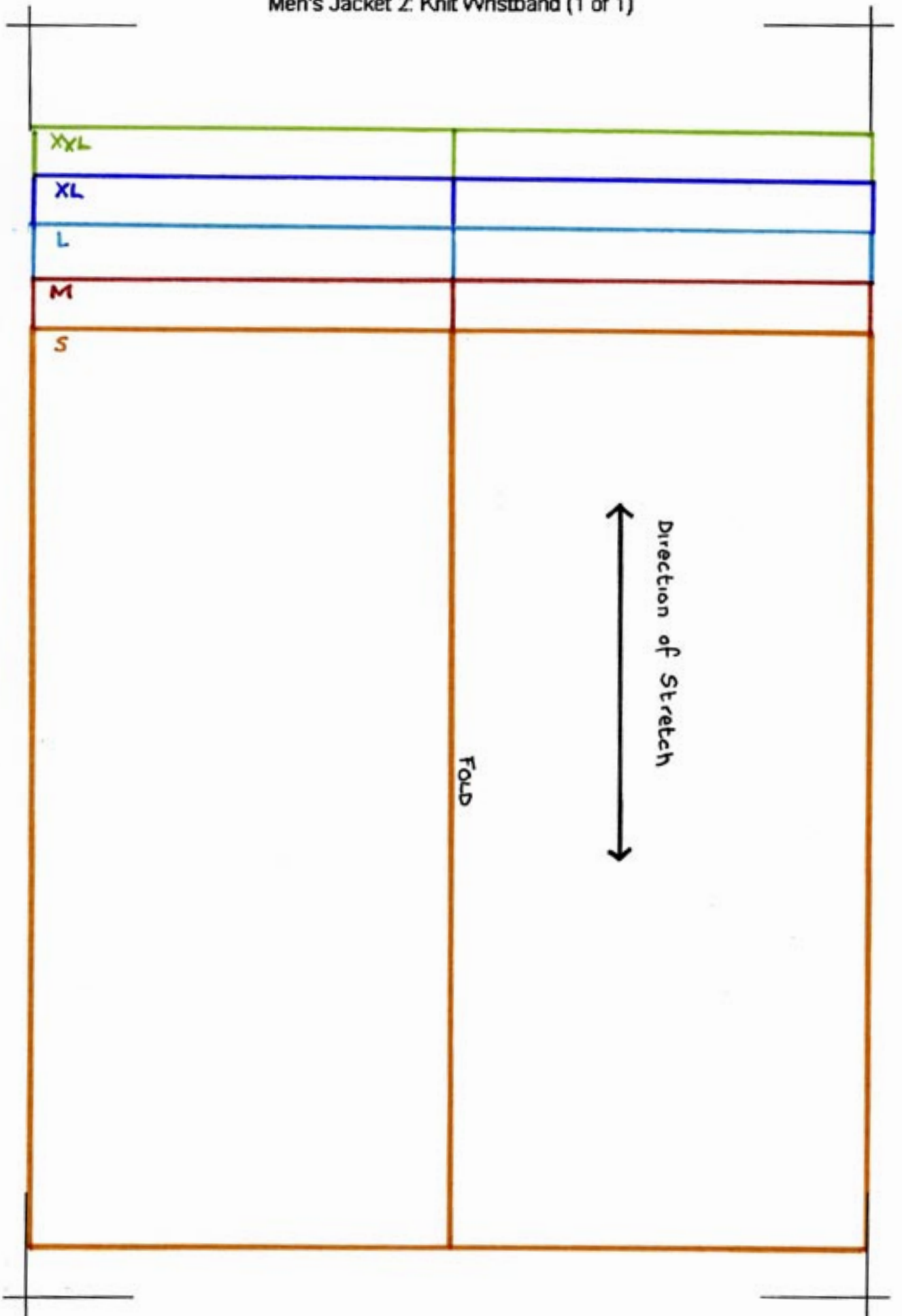
Men's Jacket 2:
Non Knit Collar

Remember to print out on A4 paper (210 x 297 mm) to get the right measurements for your size.

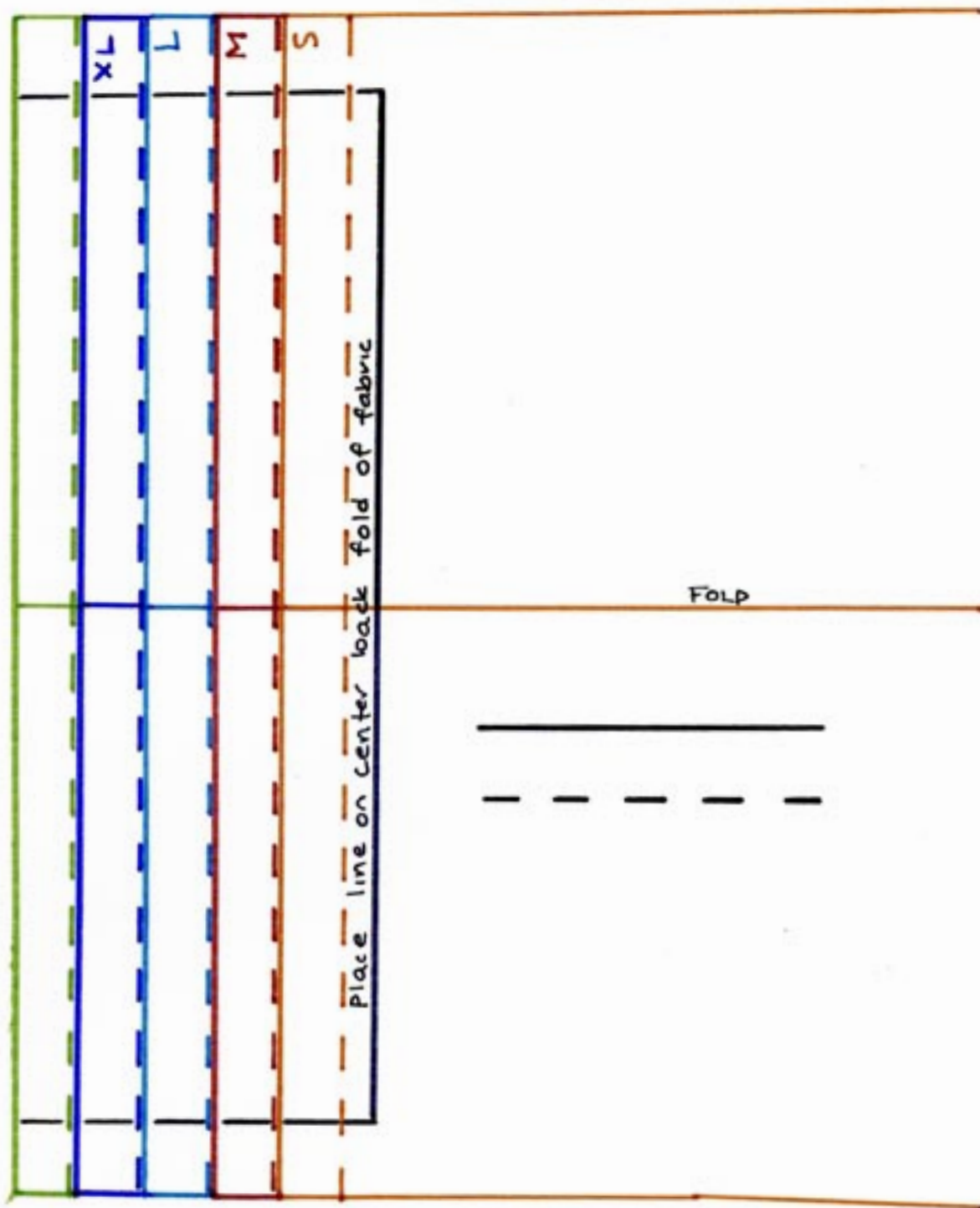
Measure the distance between the 'corner hooks' to make sure you have the right size. The distance is (170 x 257 mm)



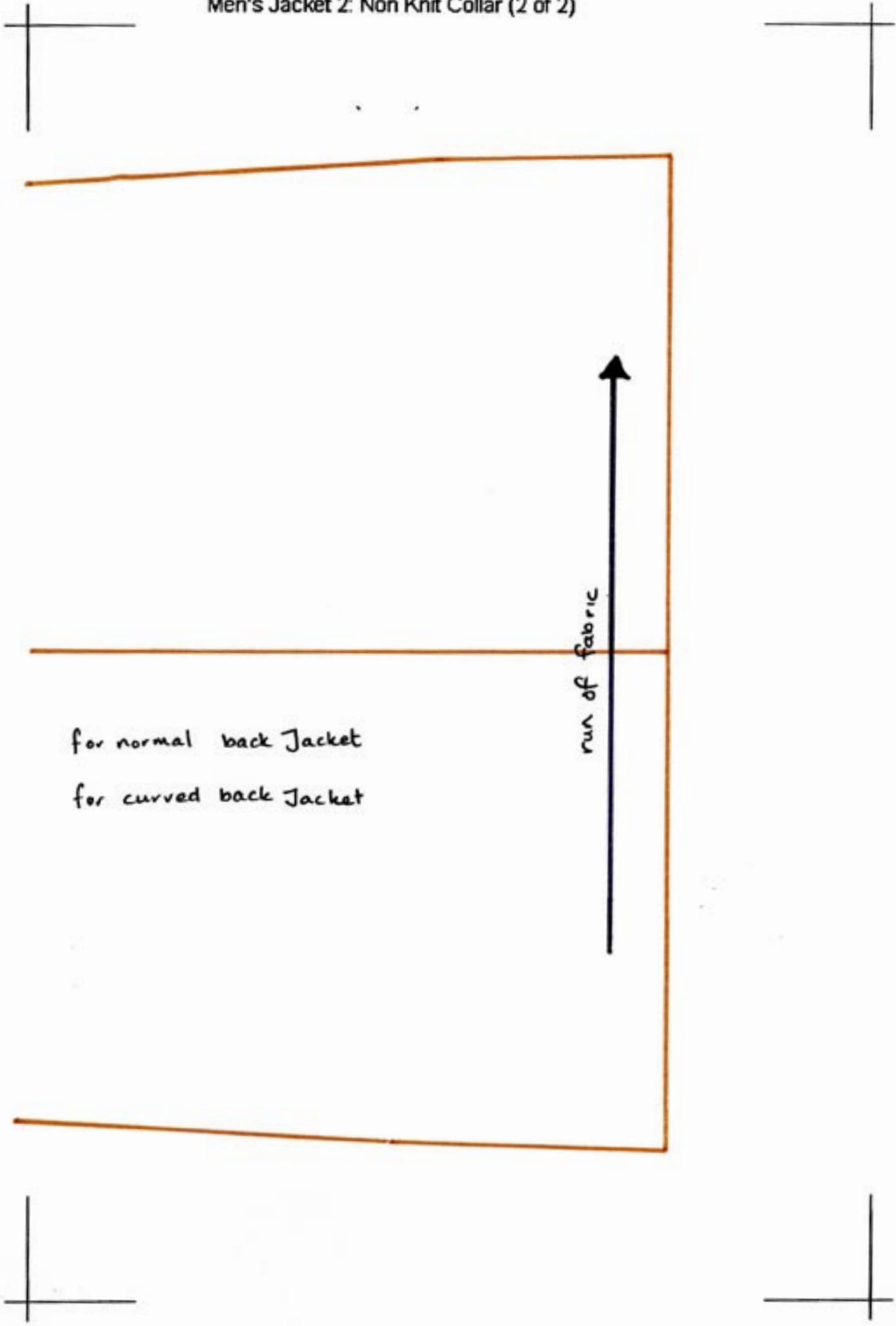
Men's Jacket 2: Knit Wristband (1 of 1)



Men's Jacket 2: Non Knit Collar (1 of 2)



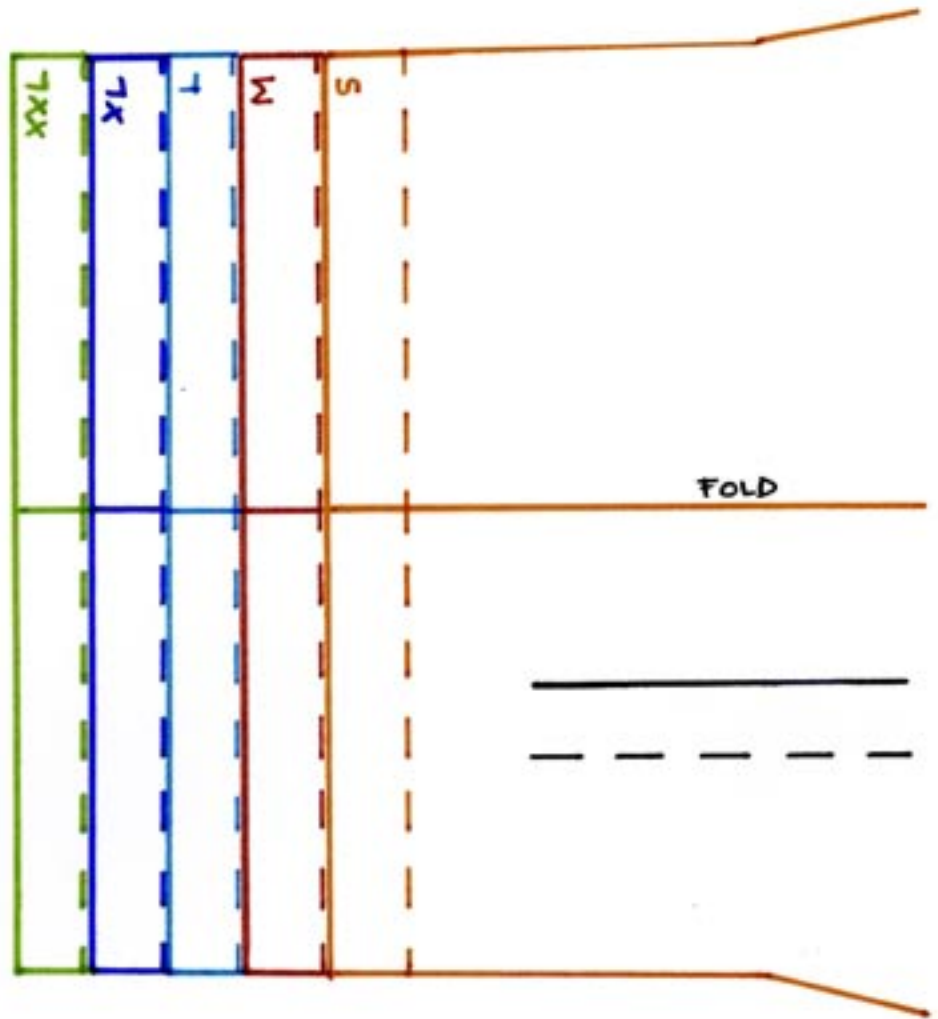
Men's Jacket 2: Non Knit Collar (2 of 2)



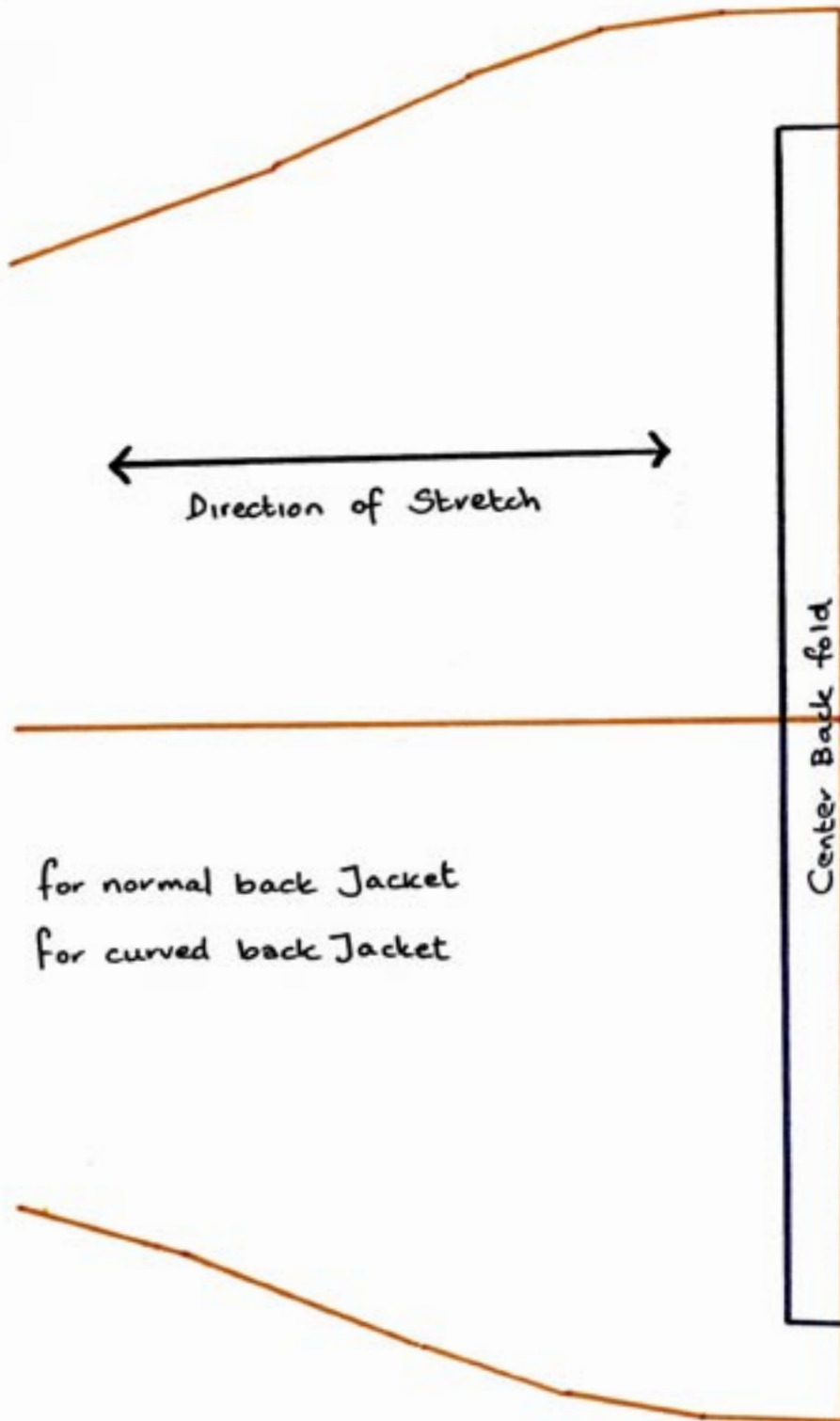
for normal back Jacket
for curved back Jacket

run of fabric

Men's Jacket 2: Knit Collar - High (1 of 2)



Men's Jacket 2: Knit Collar - High (2 or 2)



Men's Jacket 2: Knit Collar - Normal (1 of 1)

