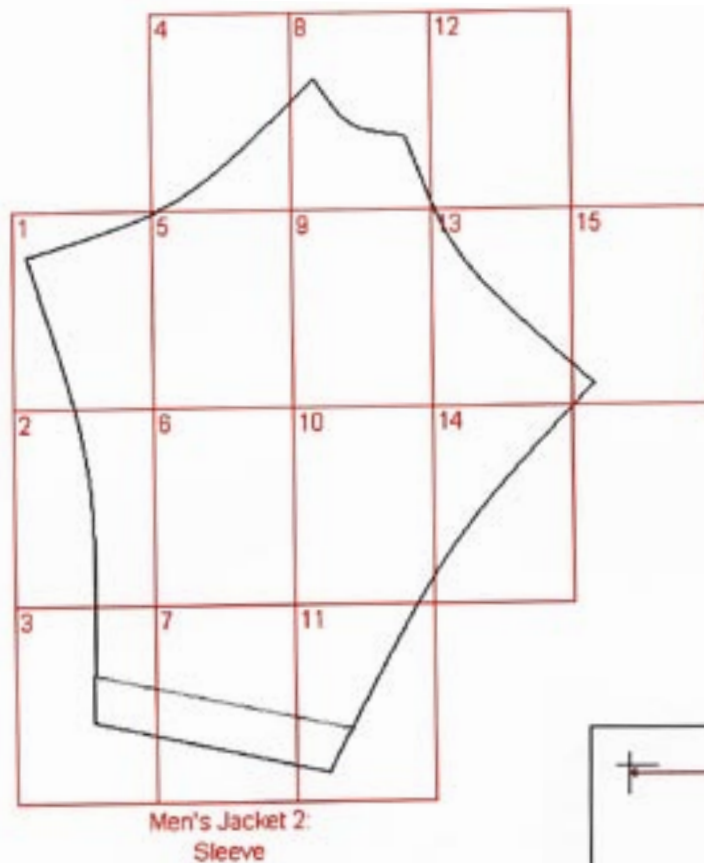


Fashion Freaks



PATTERN LAYOUT

MEN'S RAGLAN SLEEVE JACKET - SLEEVE



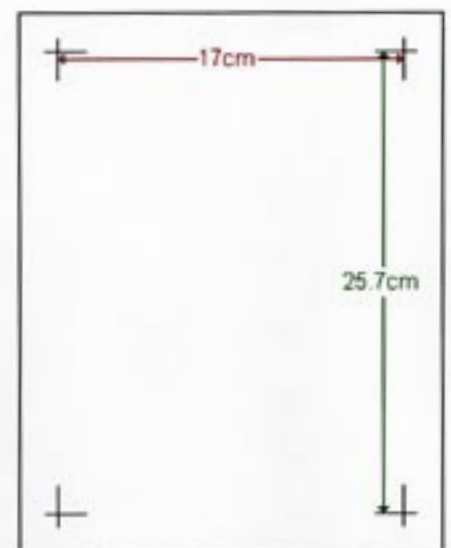
This is how the pattern pieces should go together to form the total pattern for the sleeve piece of the men's raglan sleeve jacket.

Each paper in this pdf-file contains a numbered section from this pattern.

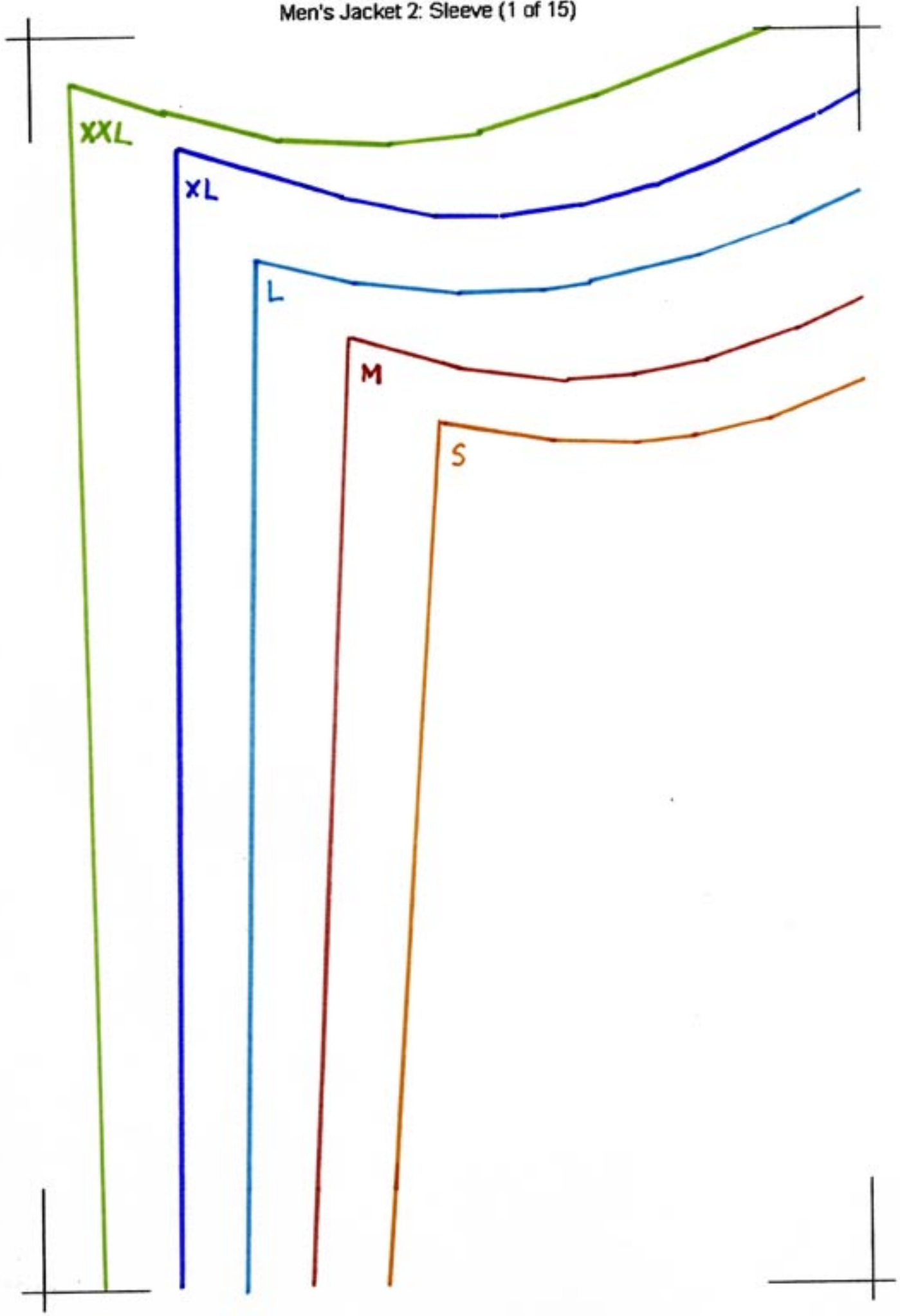
You shall put them together by matching the 'corner hooks' with each other.

Remember to print out on A4 paper (210 x 297 mm) to get the right measurements for your size.

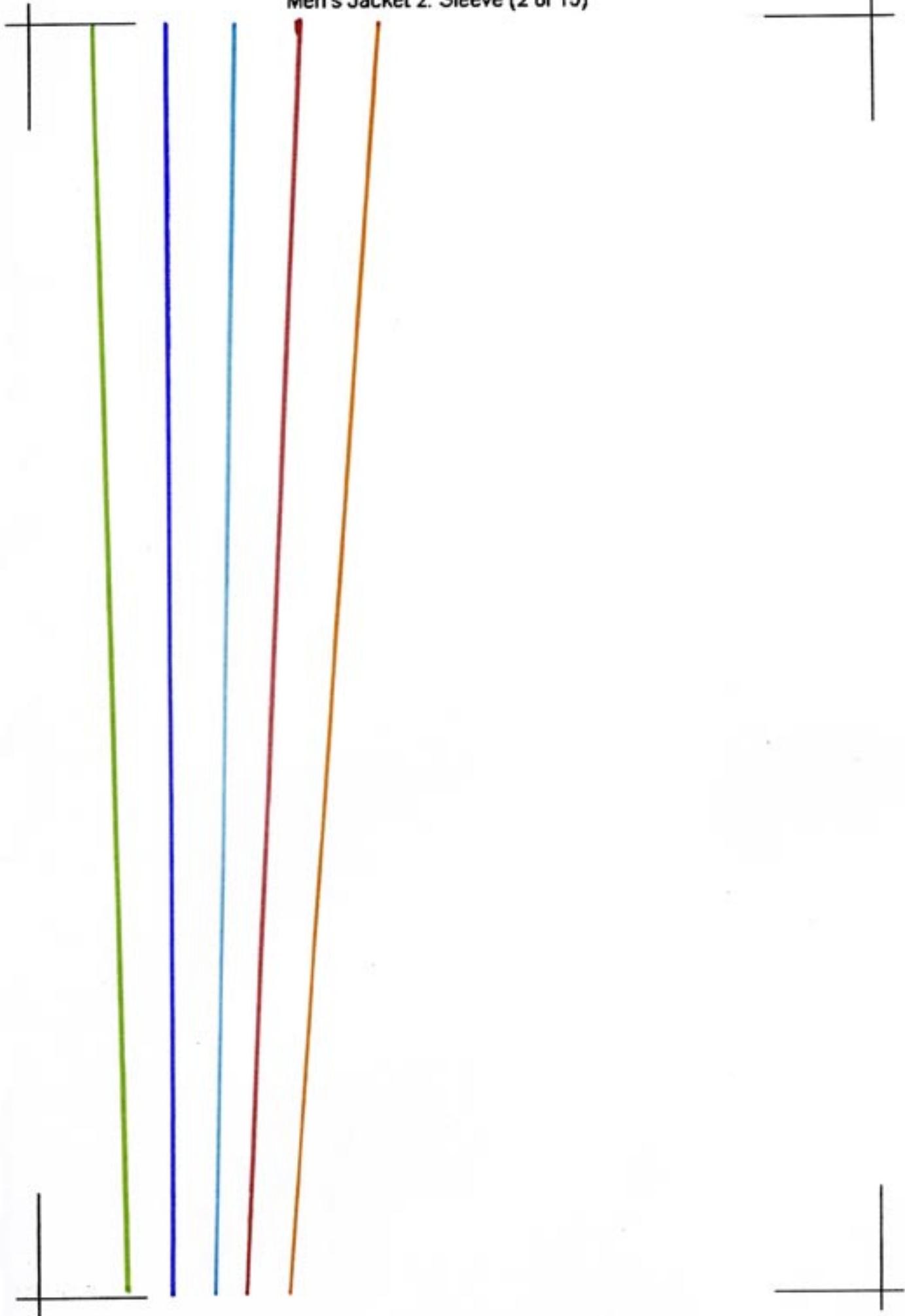
Measure the distance between the 'corner hooks' to make sure you have the right size. The distance is (170 x 257 mm)



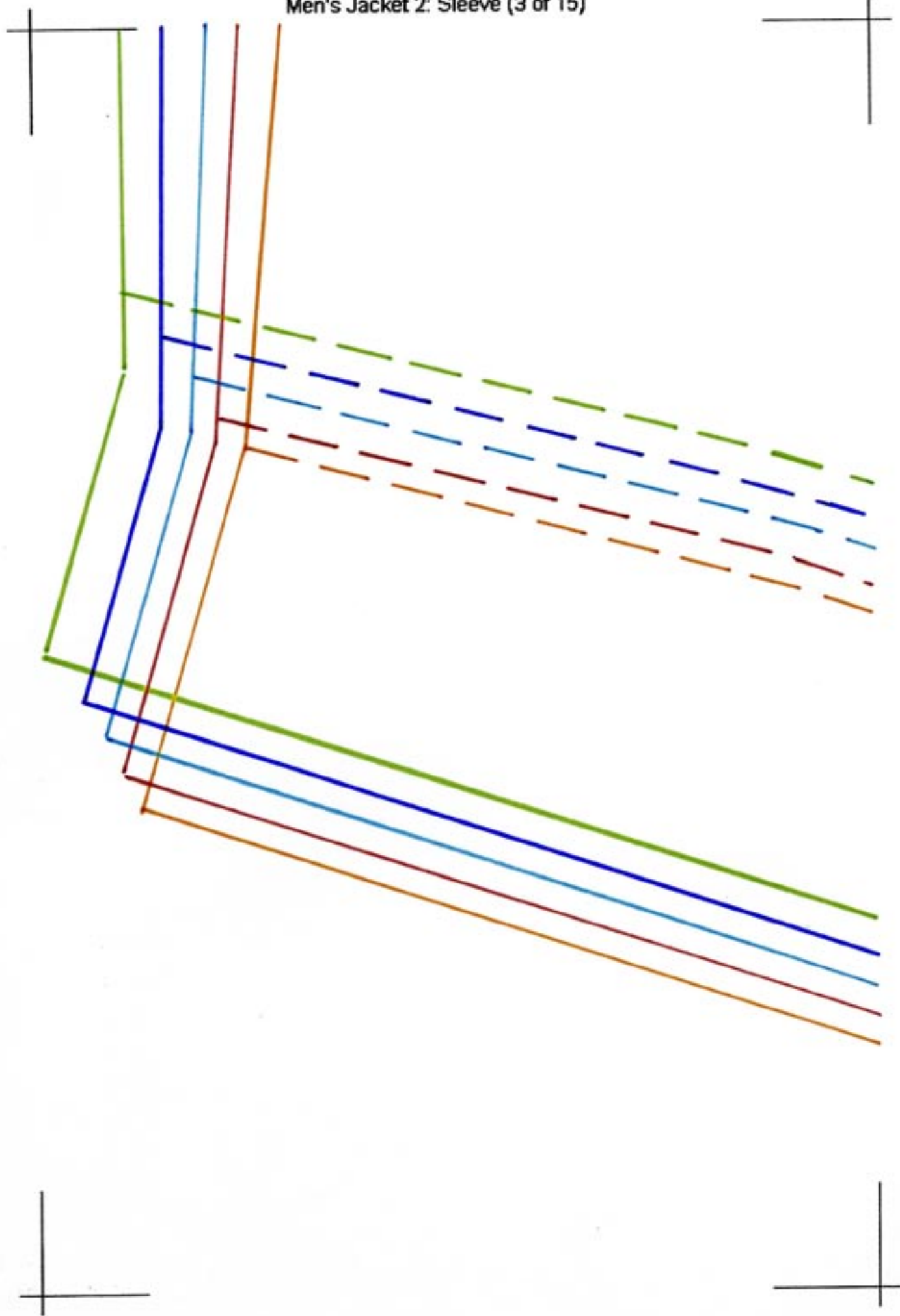
Men's Jacket 2: Sleeve (1 of 15)



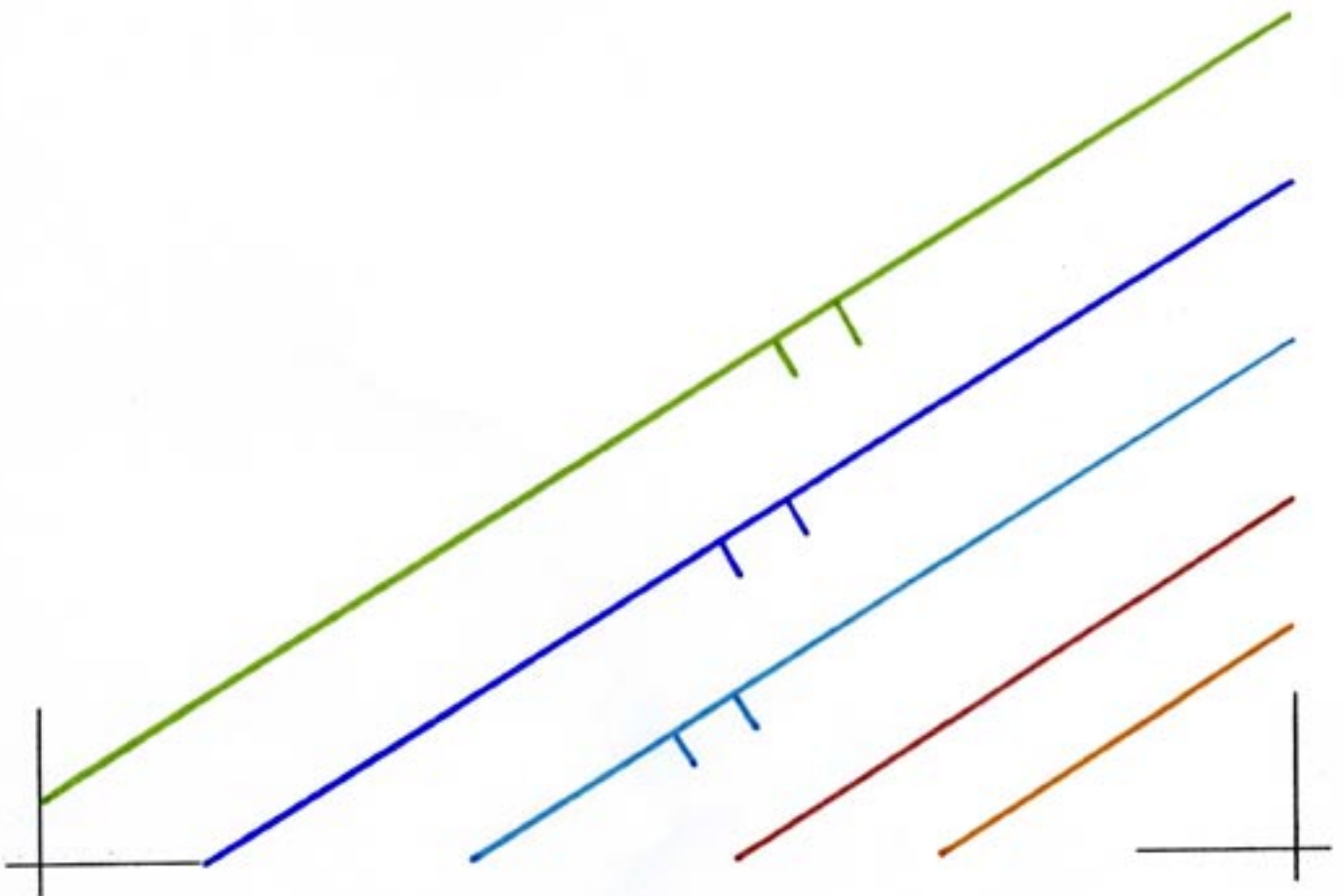
Men's Jacket 2: Sleeve (2 of 15)



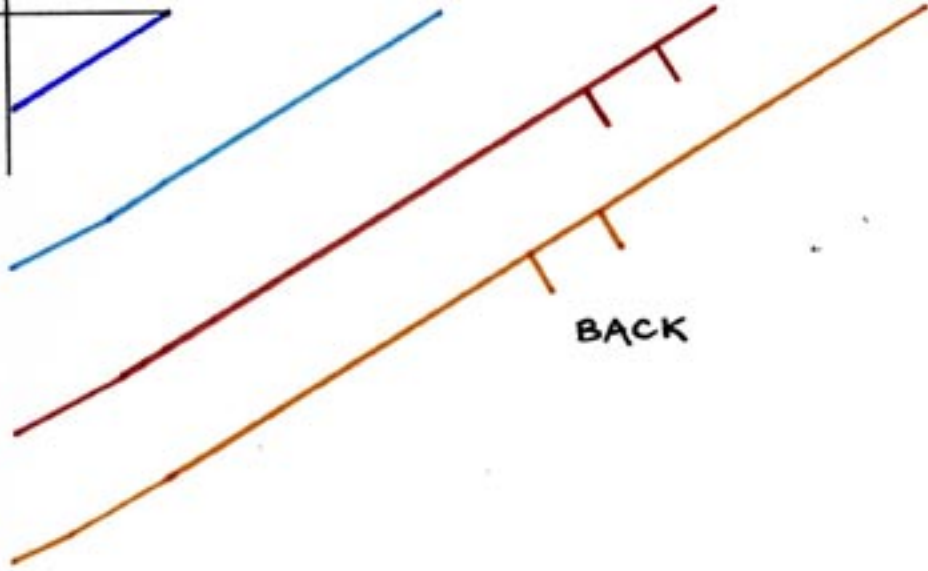
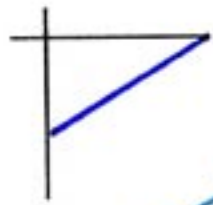
Men's Jacket 2: Sleeve (3 of 15)



Men's Jacket 2: Sleeve (4 of 15)



Men's Jacket 2: Sleeve (5 of 15)



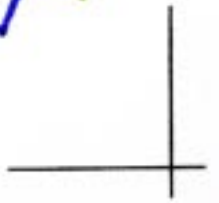
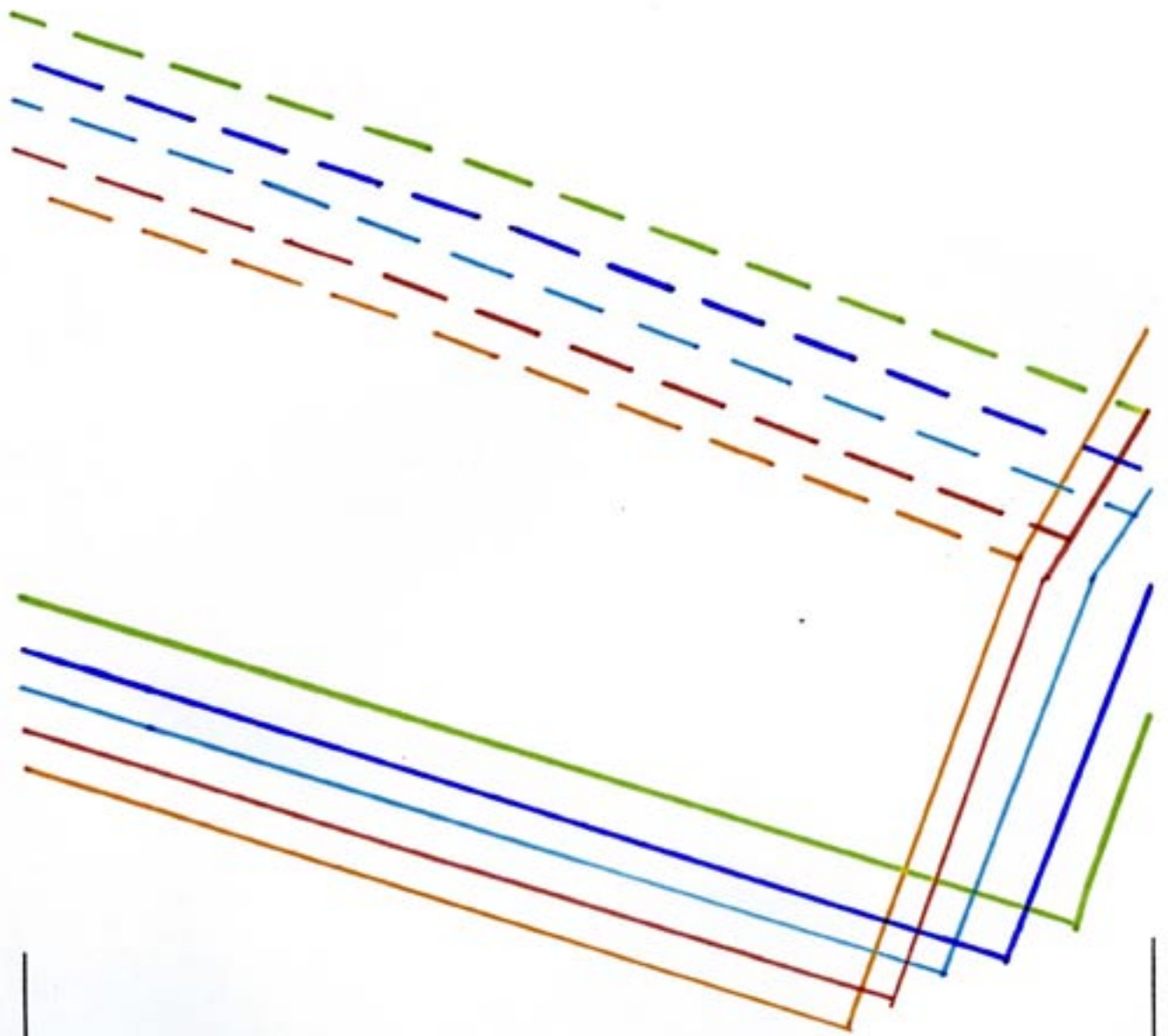
BACK



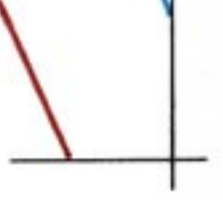
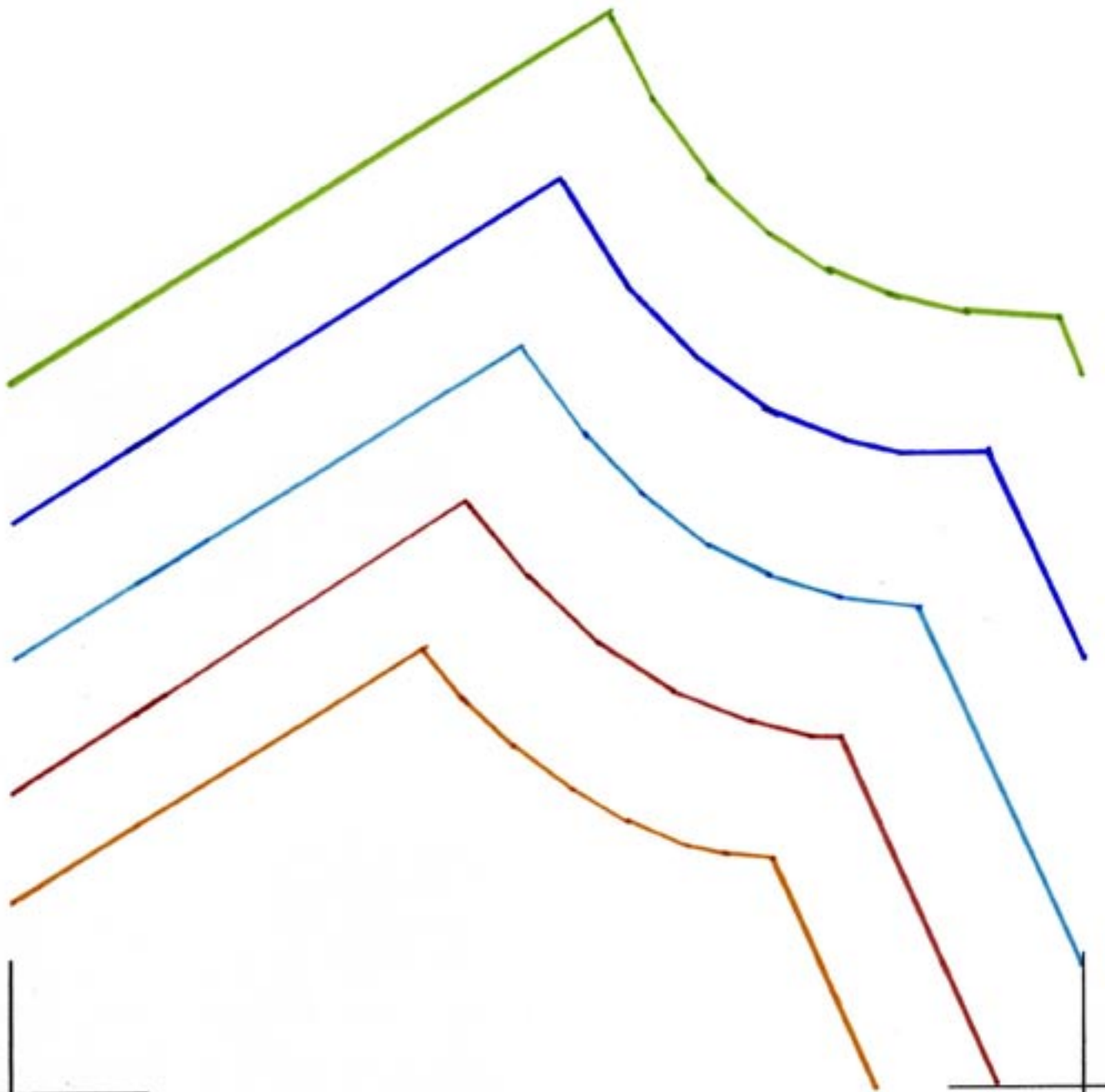
Men's Jacket 2: Sleeve (6 of 15)



Men's Jacket 2: Sleeve (7 of 15)



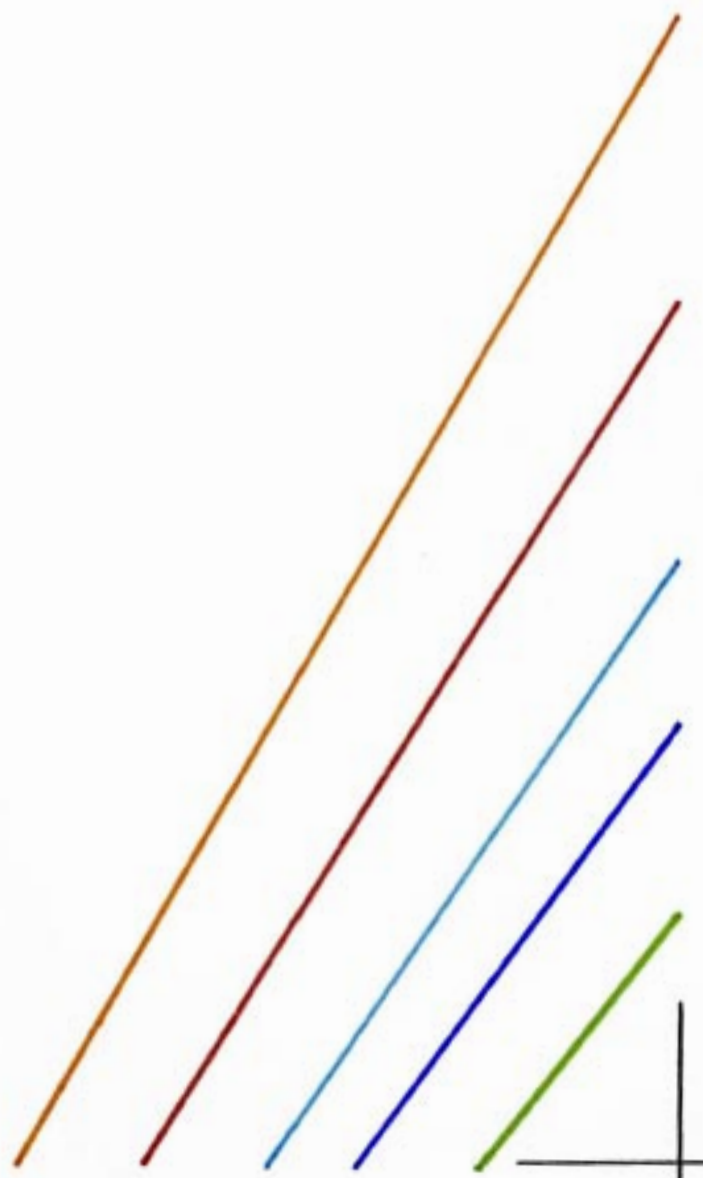
Men's Jacket 2: Sleeve (8 of 15)



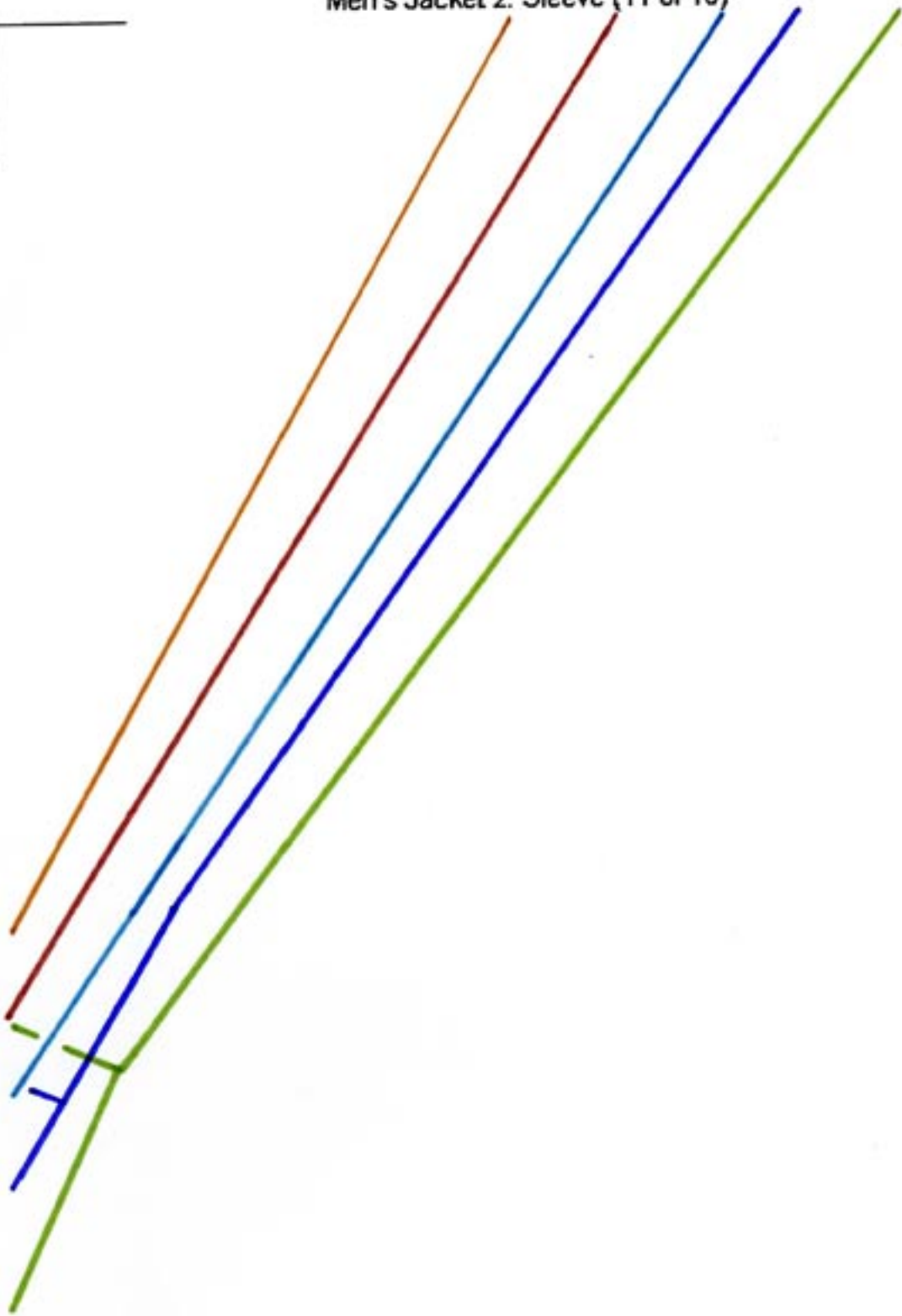
Men's Jacket 2: Sleeve (9 of 15)



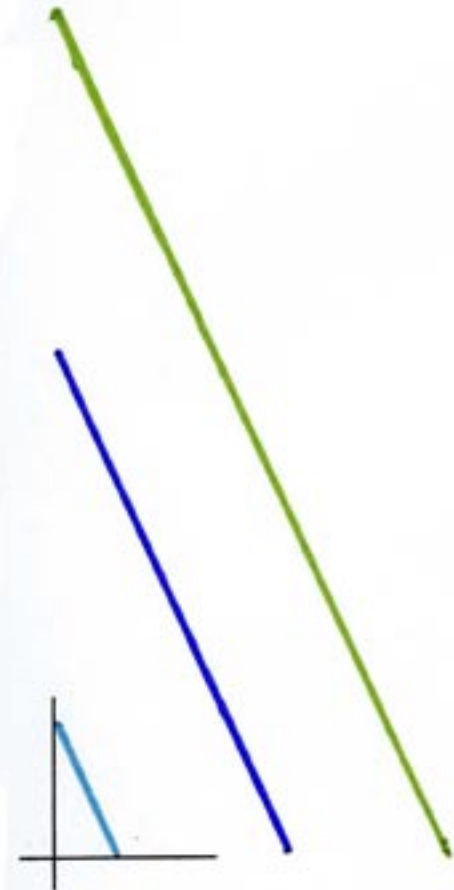
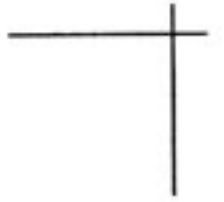
Men's Jacket 2: Sleeve (10 of 15)



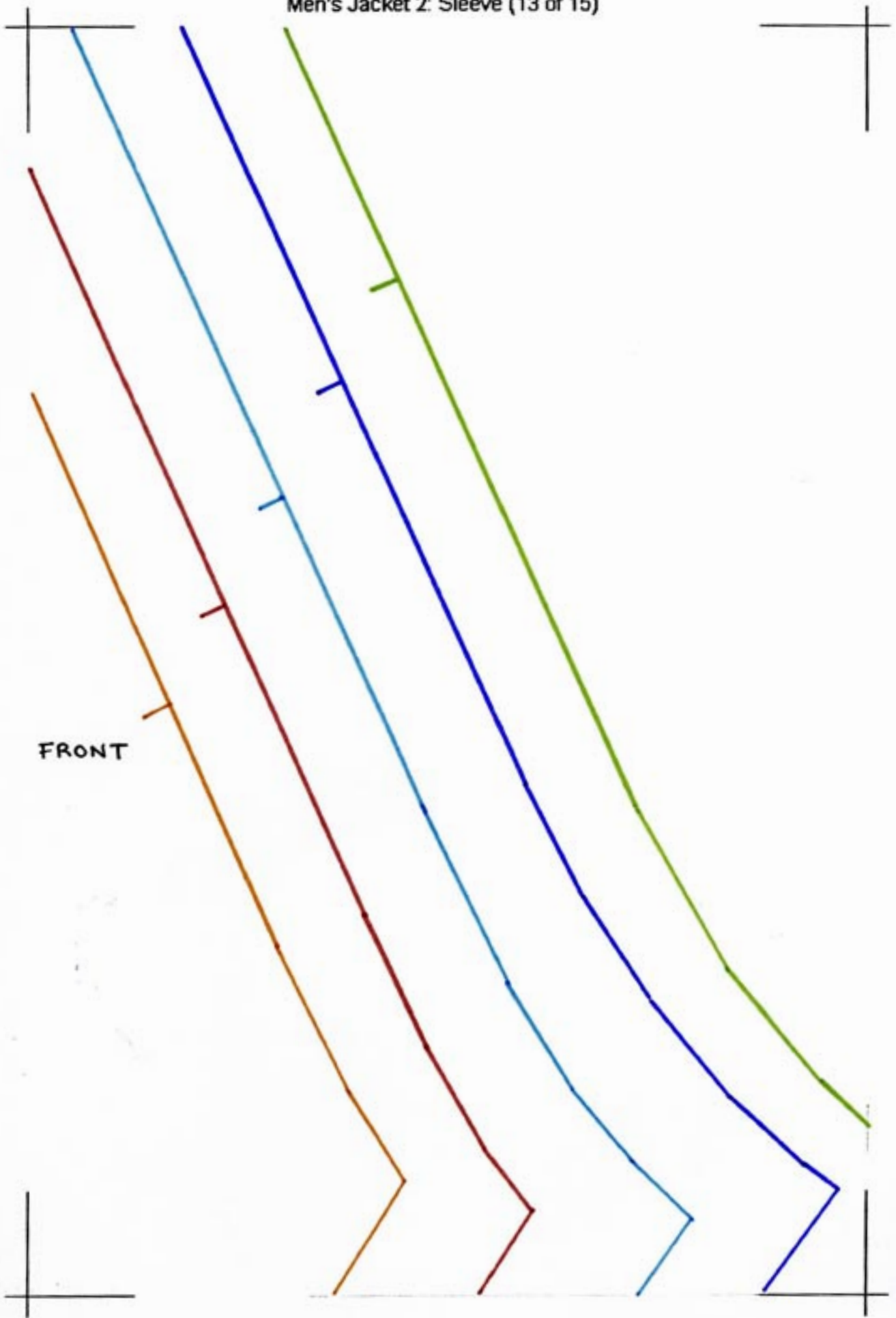
Men's Jacket 2: Sleeve (11 of 15)



Men's Jacket 2: Sleeve (12 of 15)

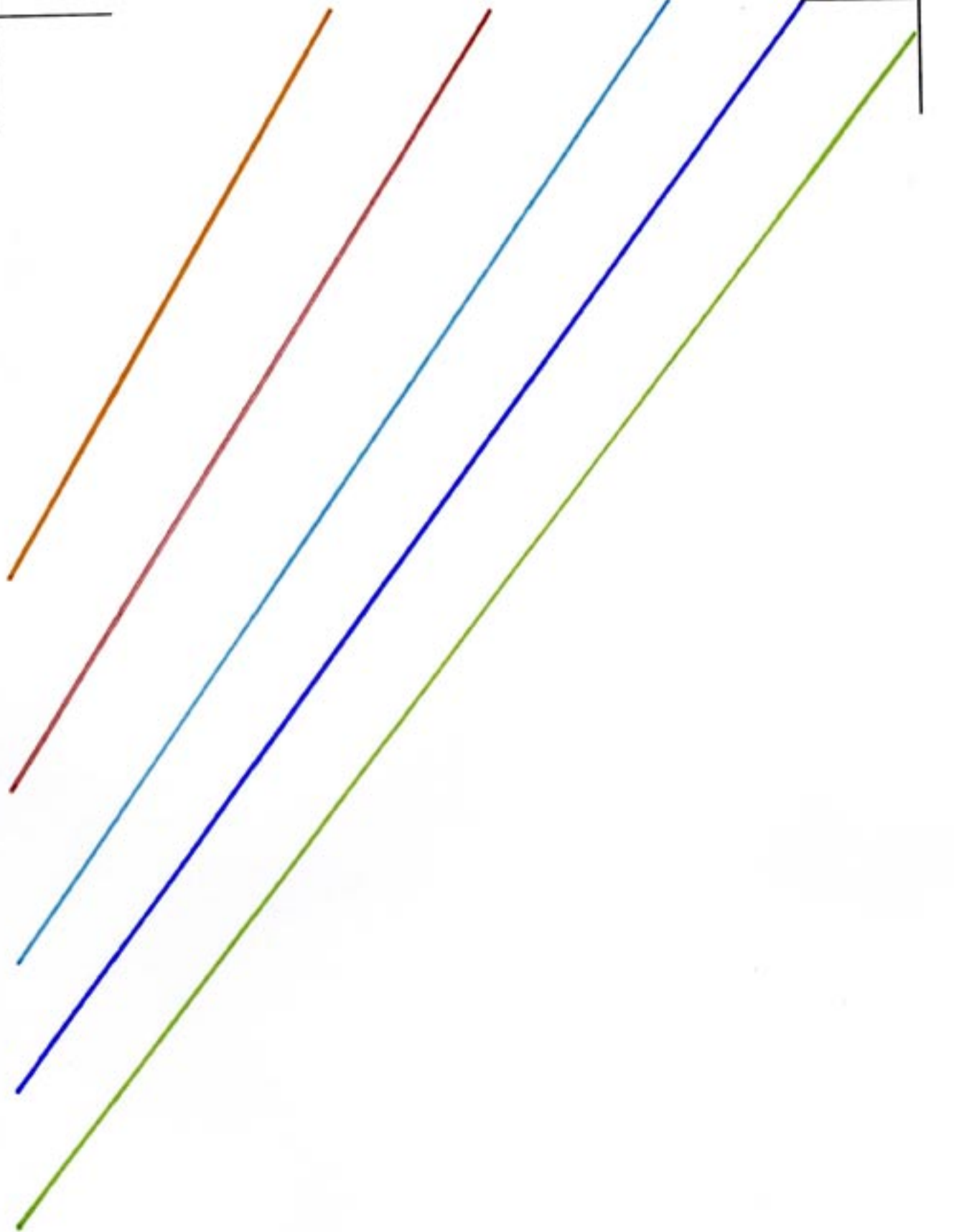


Men's Jacket 2: Sleeve (13 of 15)



FRONT

Men's Jacket 2: Sleeve (14 of 15)



Men's Jacket 2: Sleeve (15 of 15)

