

Fashion Freaks



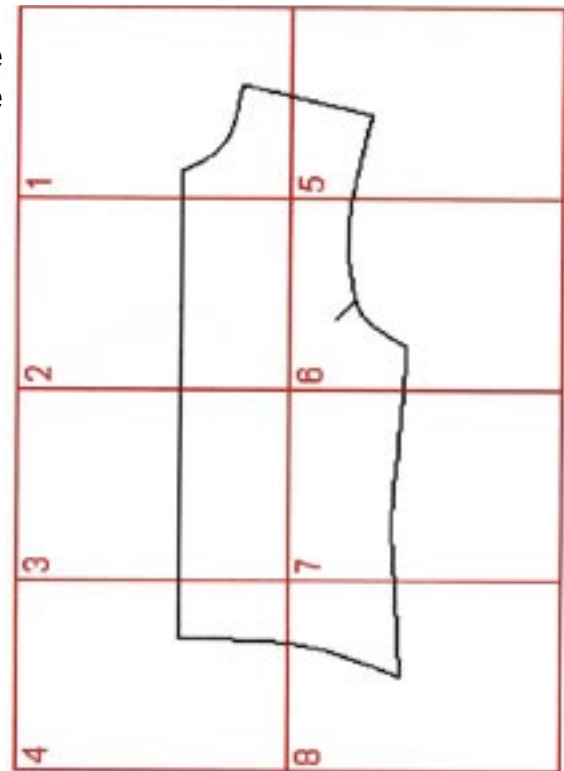
PATTERN LAYOUT

WOMEN'S SUITSTYLE JACKET - FRONT

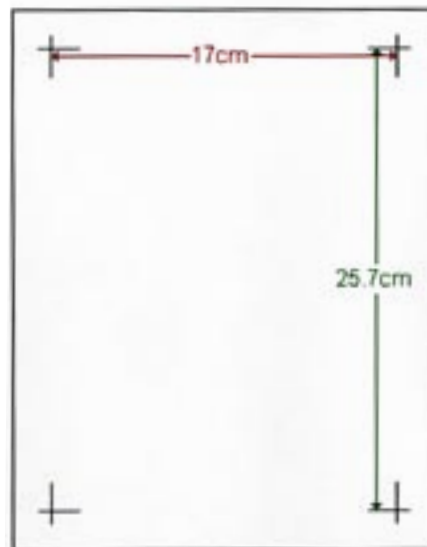
This is how the pattern pieces should go together to form the total pattern for the front piece of the men's suitstyle jacket.

Each paper in this pdf-file contains a numbered section from this pattern.

You shall put them together by matching the 'corner hooks' with each other.



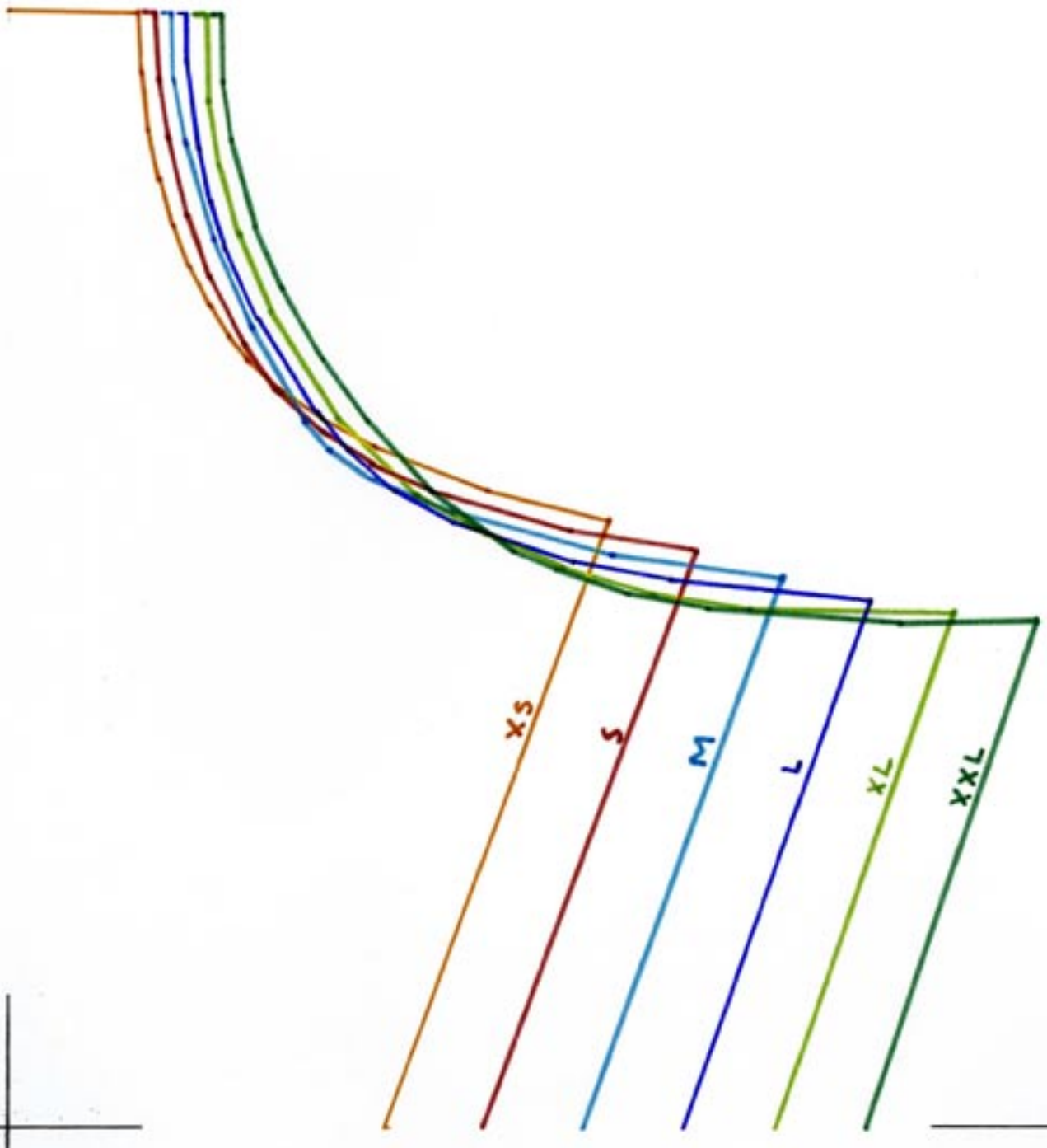
jacket in suitstyle front



Remember to print out on A4 paper (210 x 297 mm) to get the right measurements for your size.

Measure the distance between the 'corner hooks' to make sure you have the right size. The distance is (170 x 257 mm)

Women's Jacket 1: Front (1 of 8)



Women's Jacket 1: Front (2 of 8)



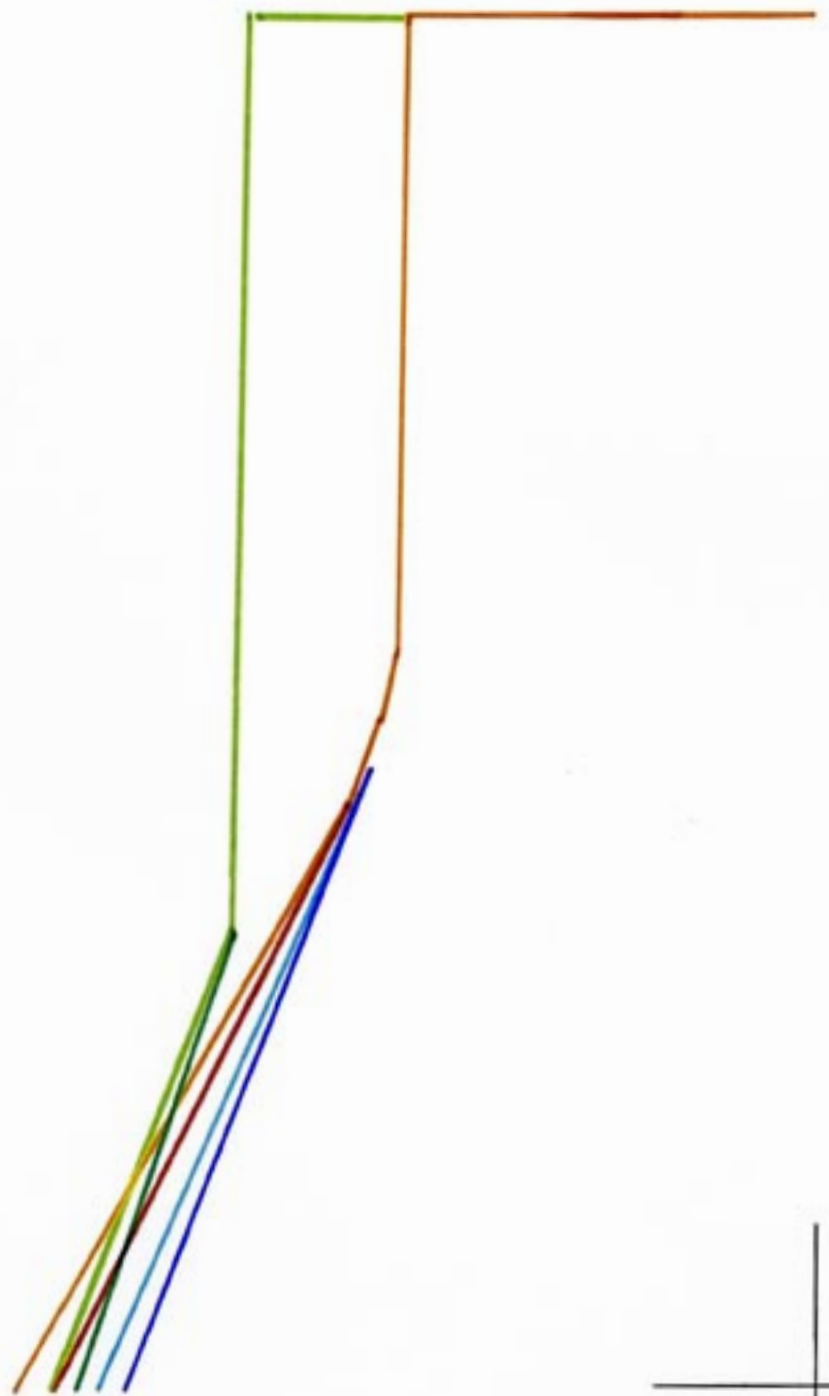
Run of fabric



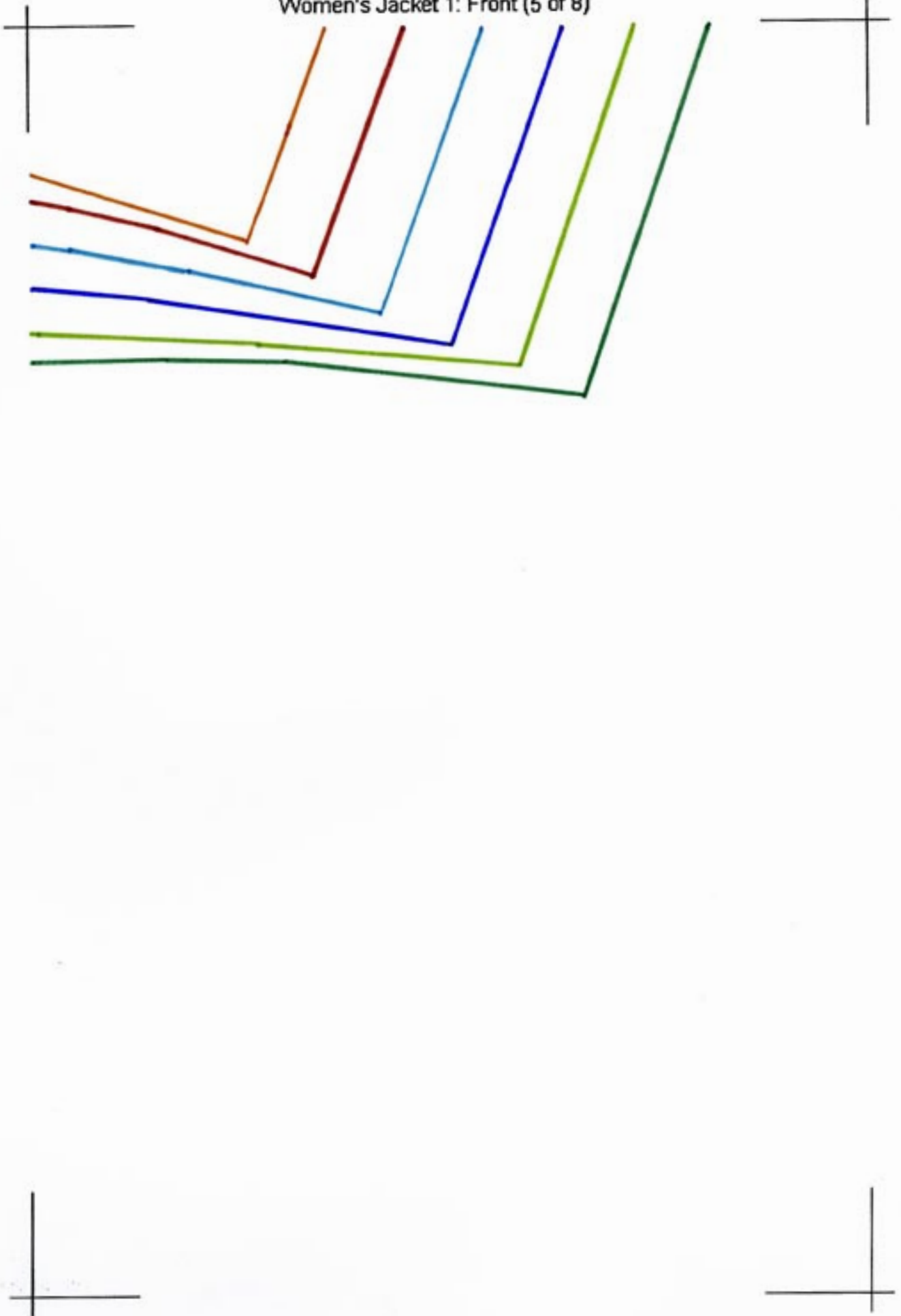
Women's Jacket 1: Front (3 of 8)



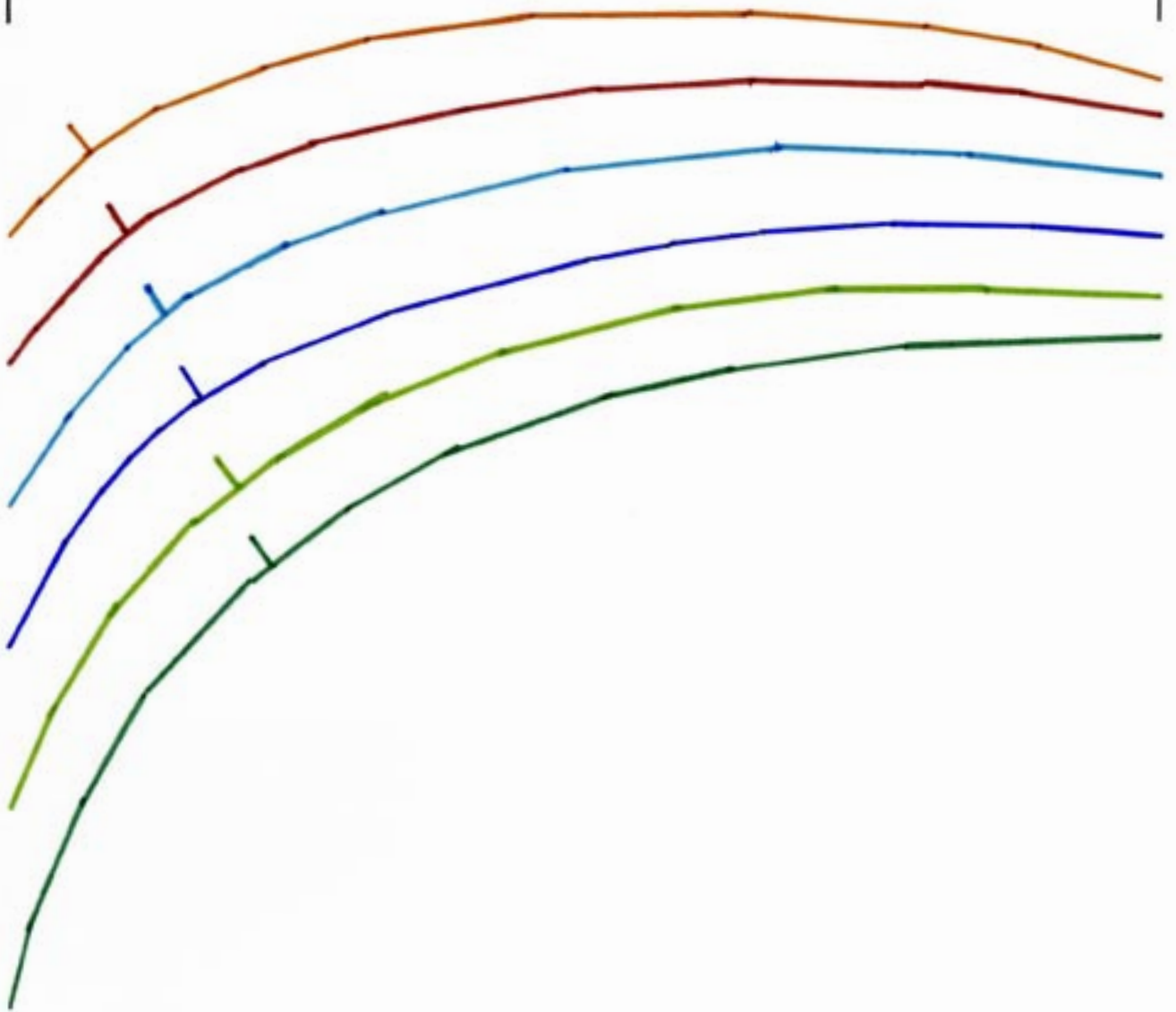
Women's Jacket 1: Front (4 of 8)



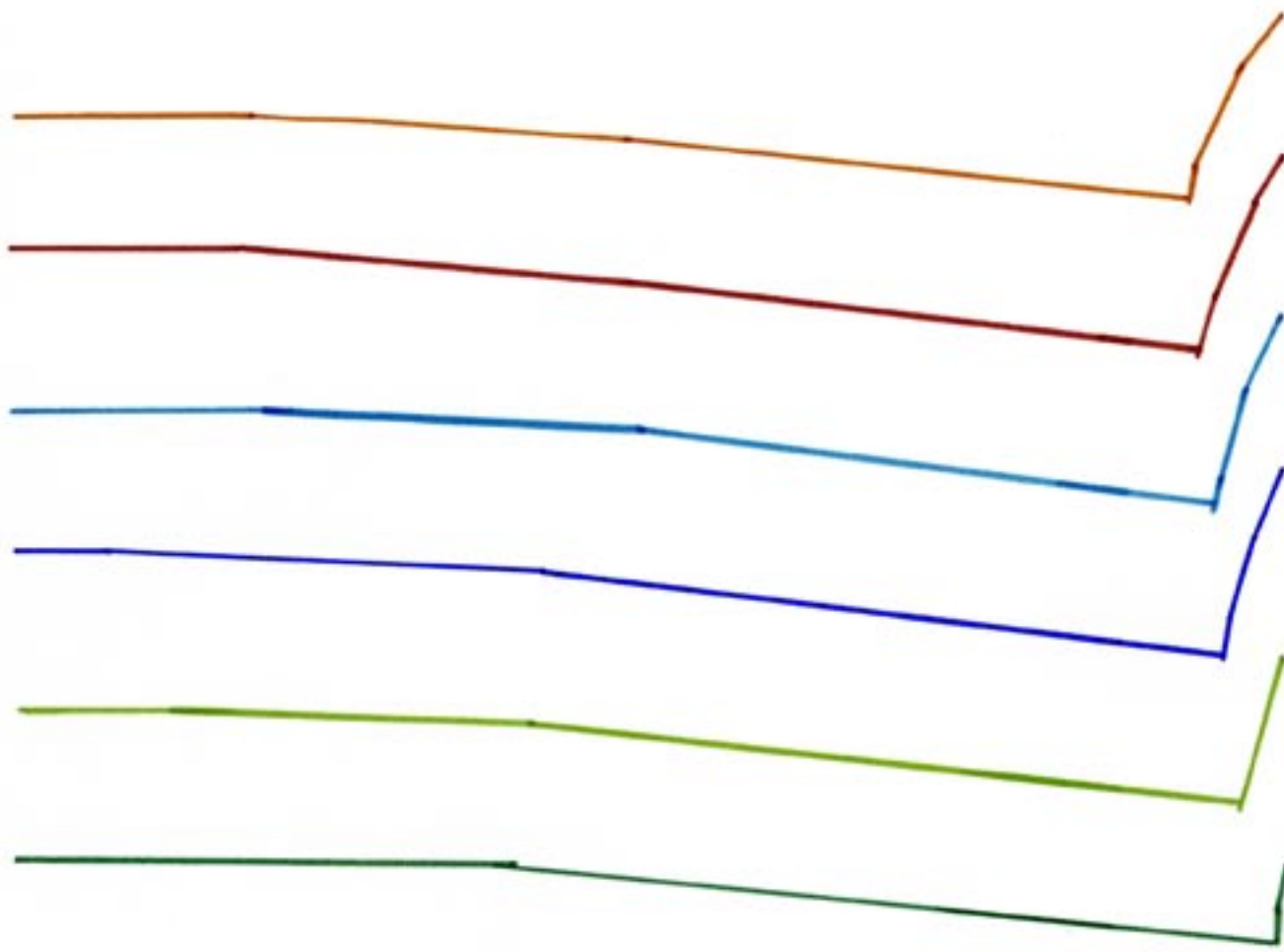
Women's Jacket 1: Front (5 of 8)



Women's Jacket 1: Front (6 of 8)



Women's Jacket 1: Front (7 of 8)



Women's Jacket 1: Front (8 of 8)

