

Fashion Freaks



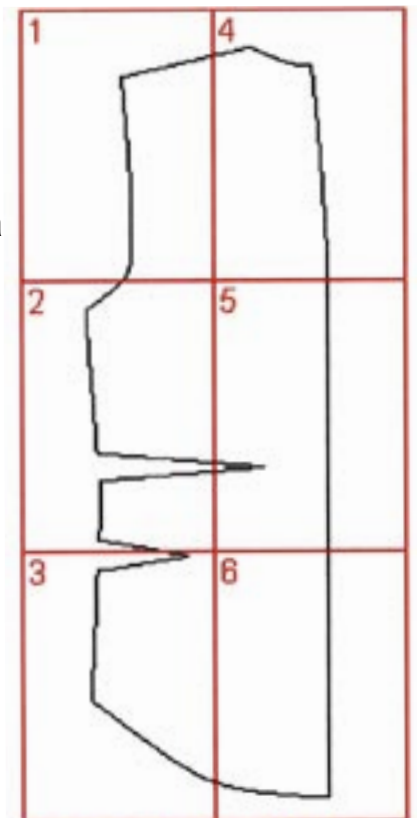
PATTERN LAYOUT

WOMEN'S SUITSTYLE JACKET - CURVED BACK

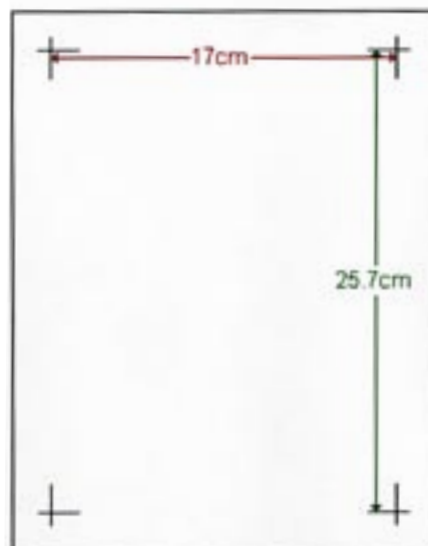
This is how the pattern pieces should go together to form the total pattern for the curved back piece of the women's suitstyle jacket.

Each paper in this pdf-file contains a numbered section from this pattern.

You shall put them together by matching the 'corner hooks' with each other.



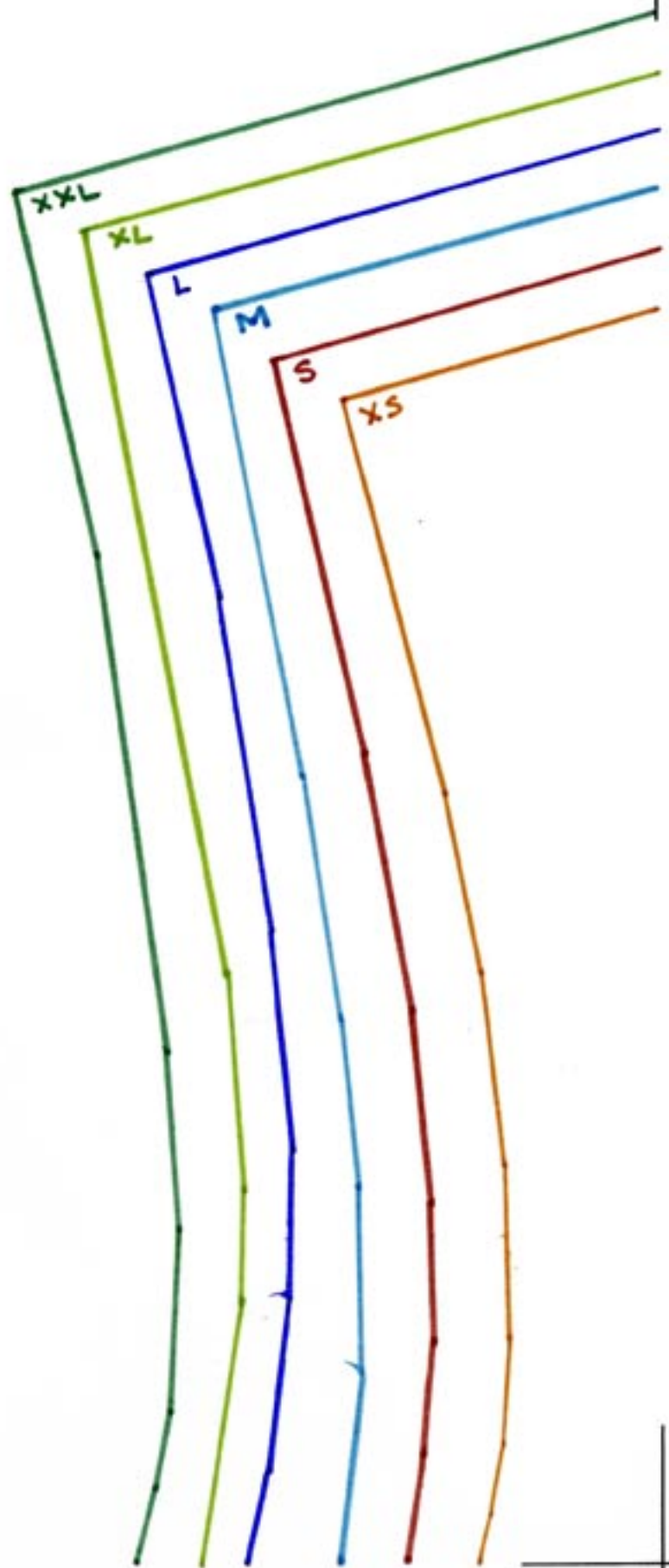
jacket in suitstyle
curved back



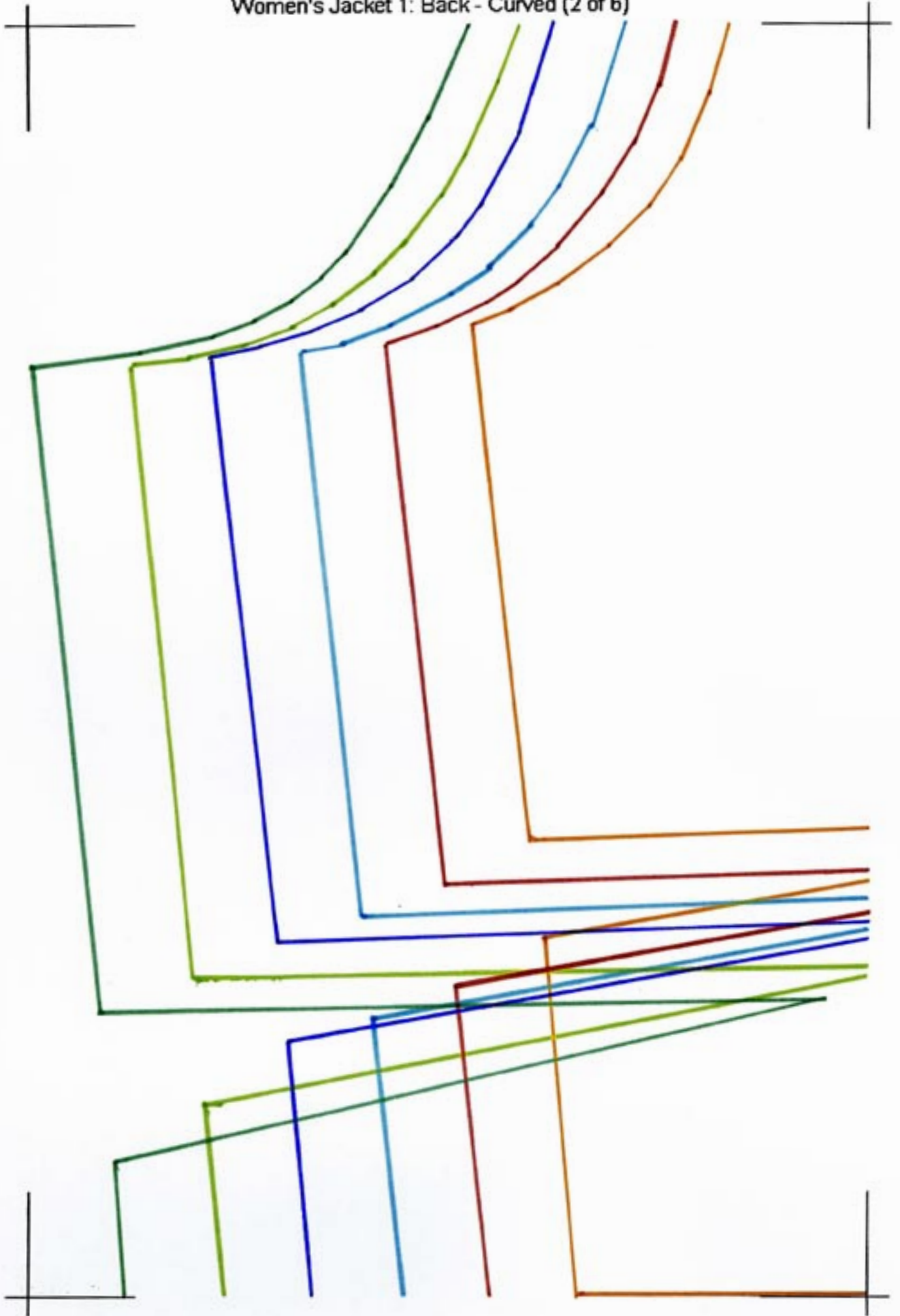
Remember to print out on A4 paper (210 x 297 mm) to get the right measurements for your size.

Measure the distance between the 'corner hooks' to make sure you have the right size. The distance is (170 x 257 mm)

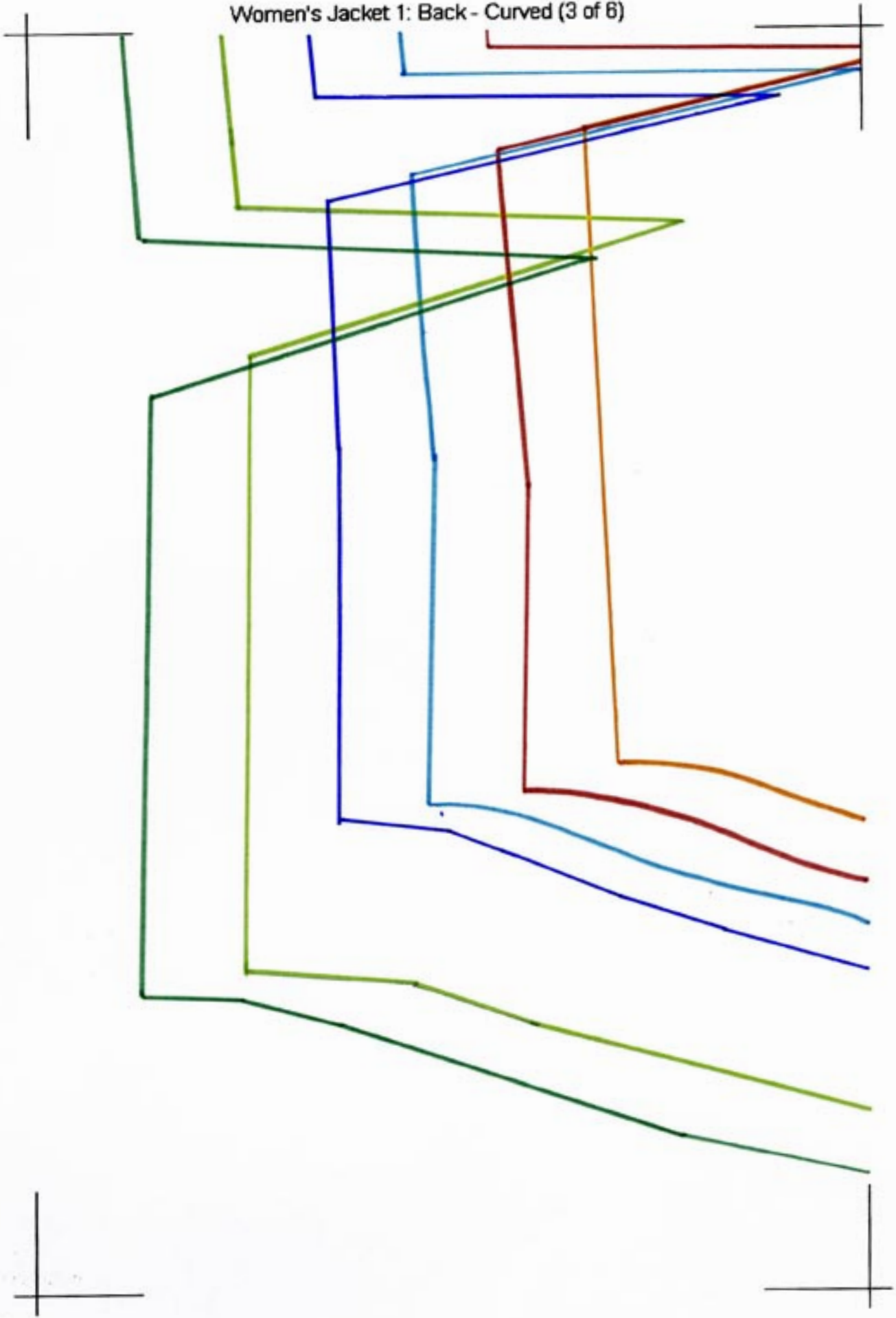
Women's Jacket 1: Back - Curved (1 of 6)



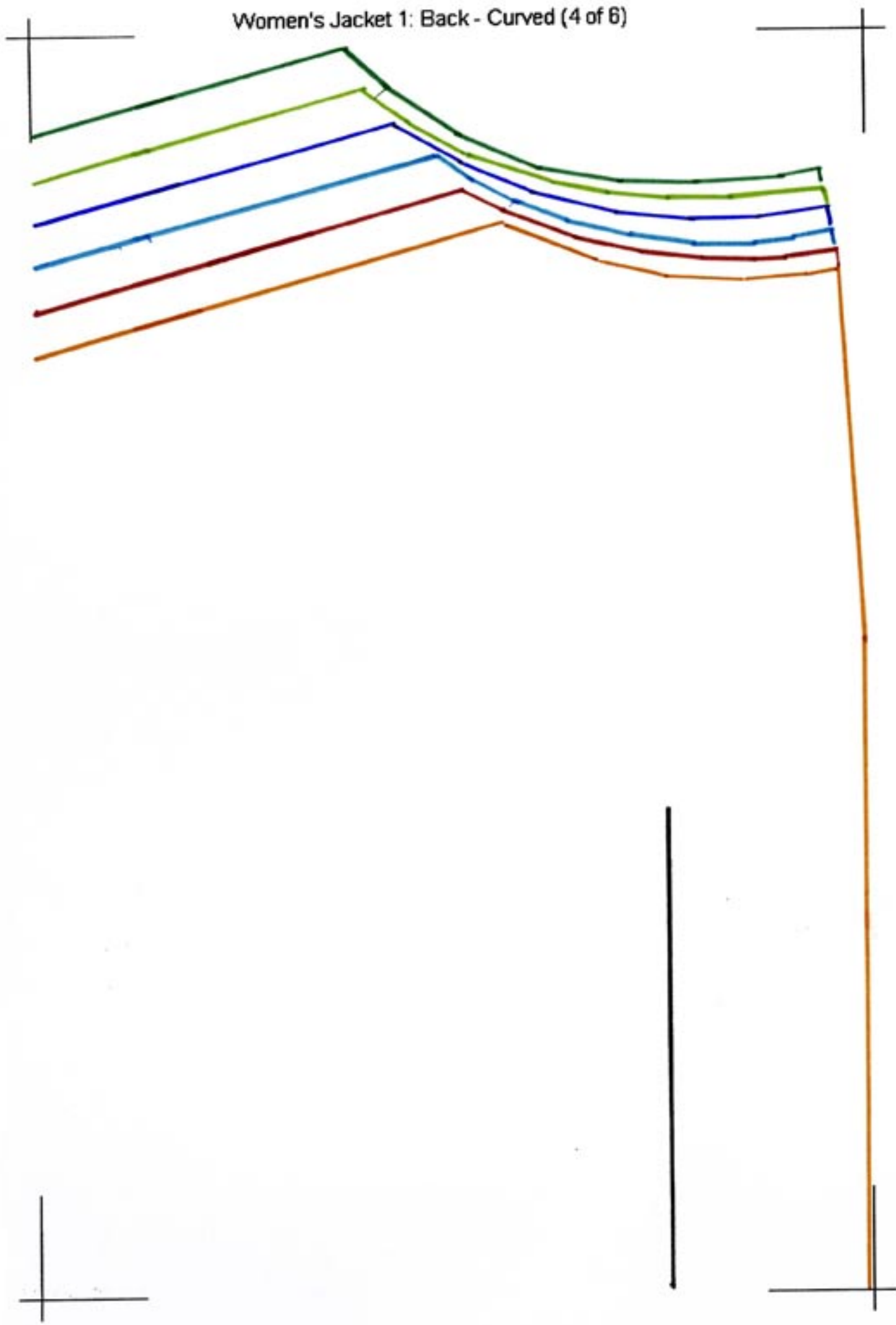
Women's Jacket 1: Back - Curved (2 of 6)



Women's Jacket 1: Back - Curved (3 of 6)



Women's Jacket 1: Back - Curved (4 of 6)



Women's Jacket 1: Back - Curved (5 of 6)



Run of Fabric



Women's Jacket 1: Back - Curved (6 of 6)

