

Fashion Freaks



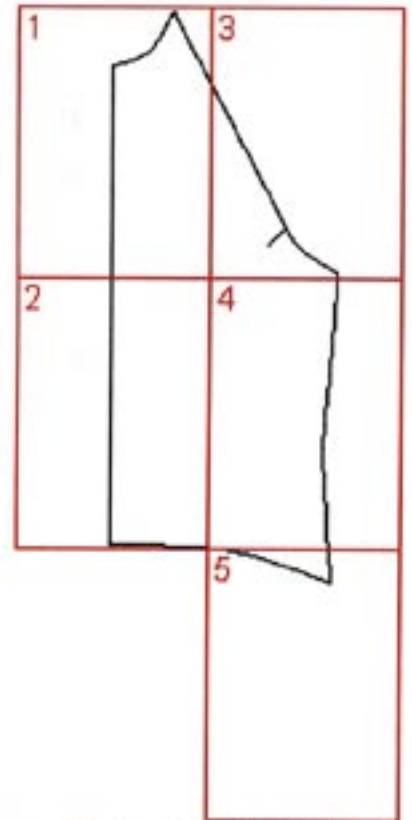
PATTERN LAYOUT

WOMEN'S RAGLAN SLEEVE JACKET - FRONT

This is how the pattern pieces should go together to form the total pattern for the front of the women's raglan sleeve jacket.

Each paper in this pdf-file contains a numbered section from this pattern.

You shall put them together by matching the 'corner hooks' with each other.



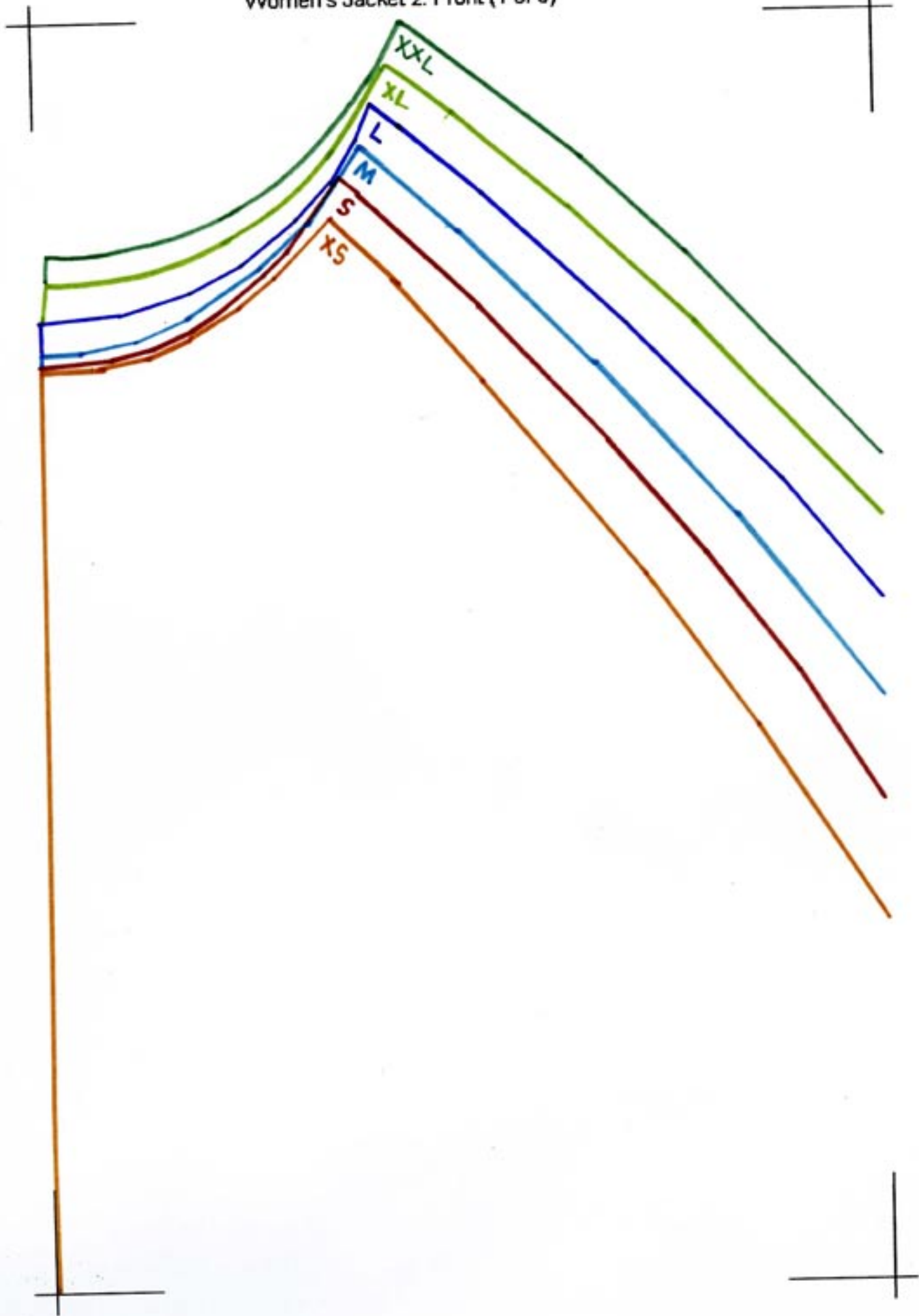
Women's Jacket 2:
Front



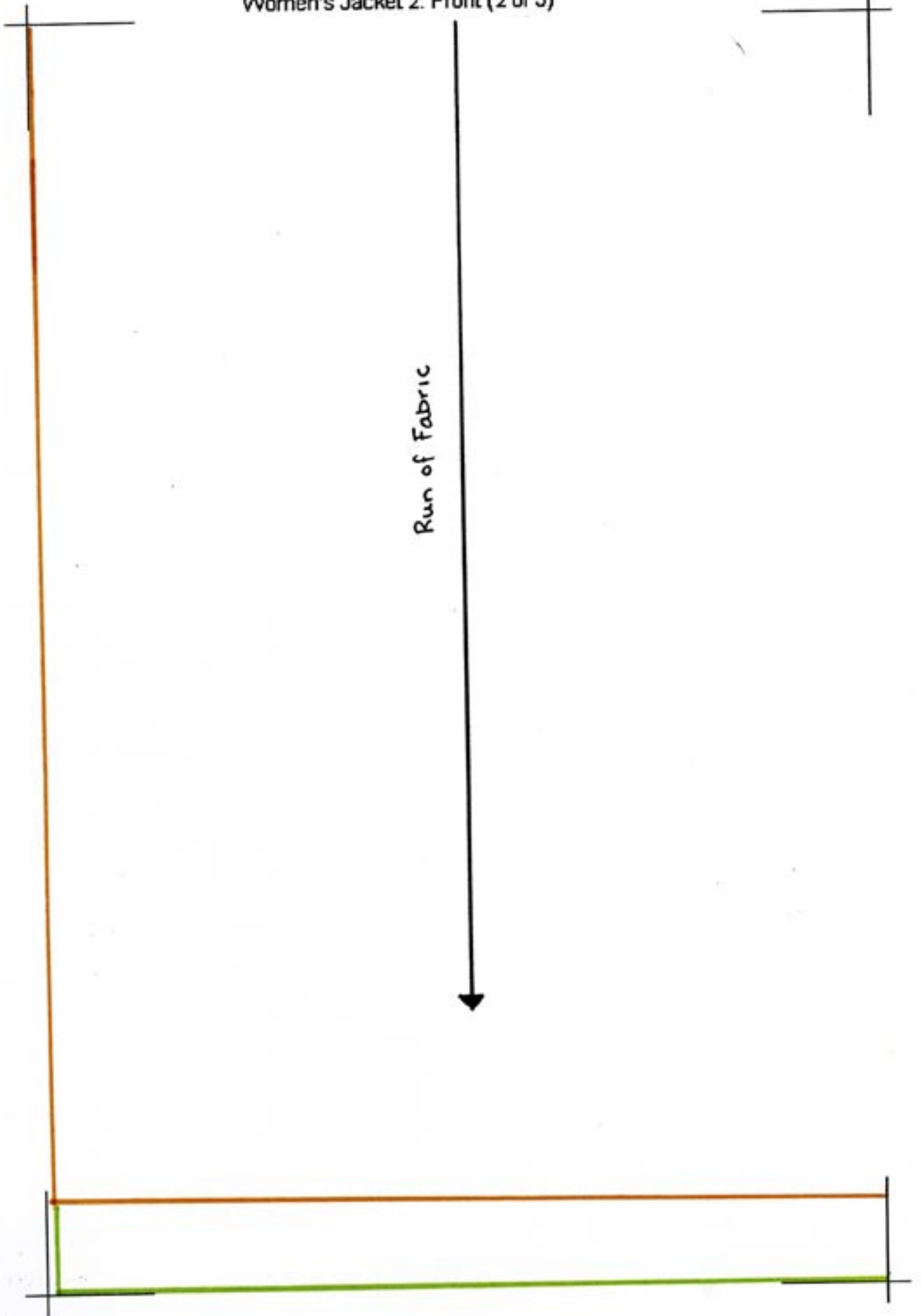
Remember to print out on A4 paper (210 x297 mm) to get the right measurements for your size.

Measure the stance between the 'corner hooks' to make sure you have the right size. The distance is (170 x 257 mm)

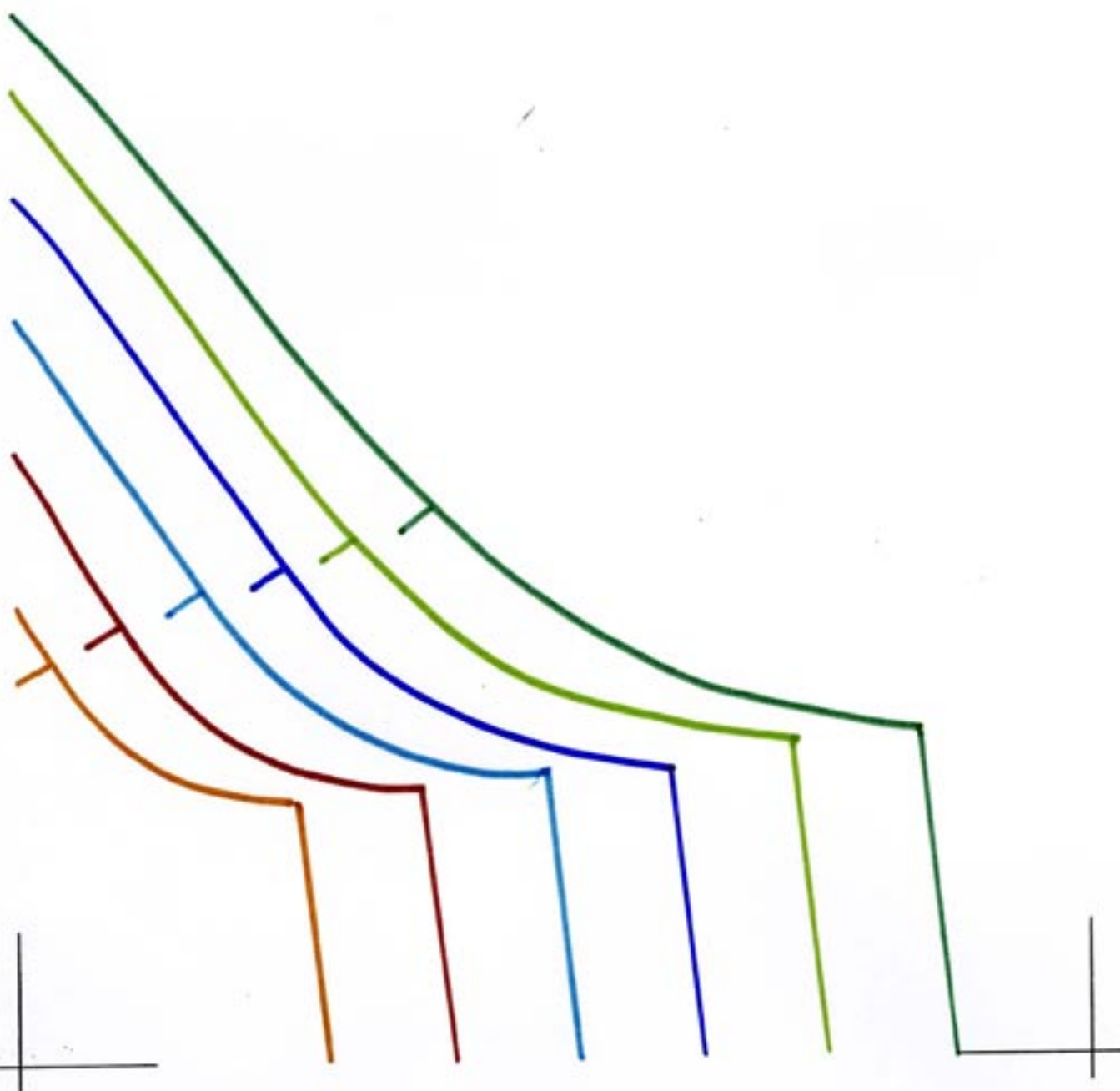
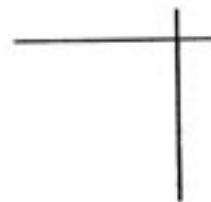
Women's Jacket 2: Front (1 of 5)



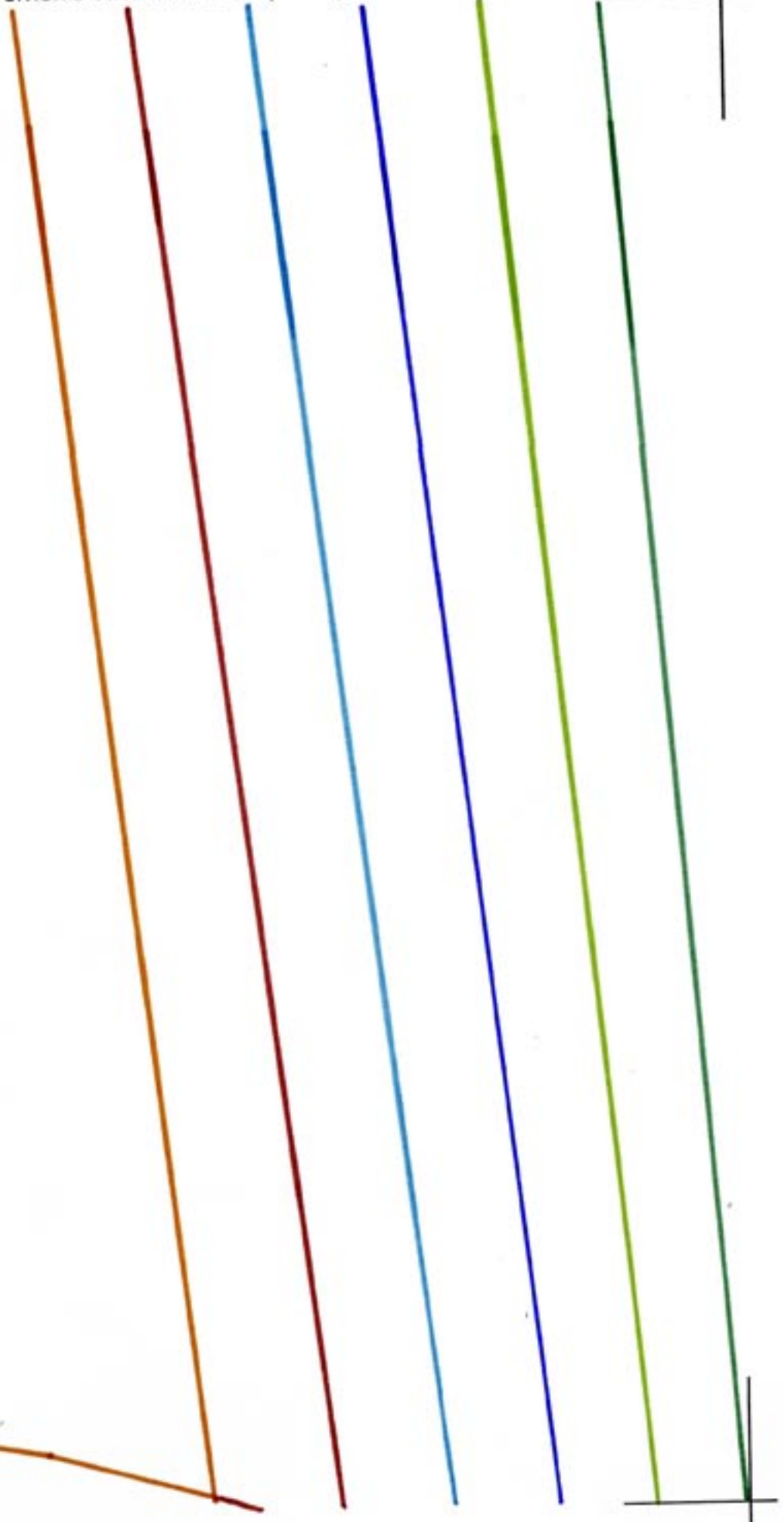
Women's Jacket 2: Front (2 of 5)



Women's Jacket 2: Front (3 of 5)



Women's Jacket 2: Front (4 of 5)



Women's Jacket 2: Front (5 of 5)

